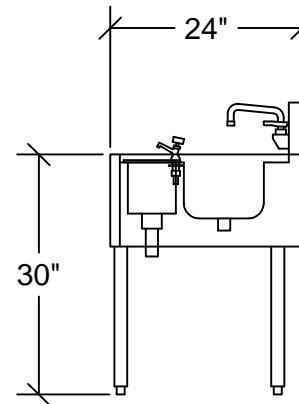
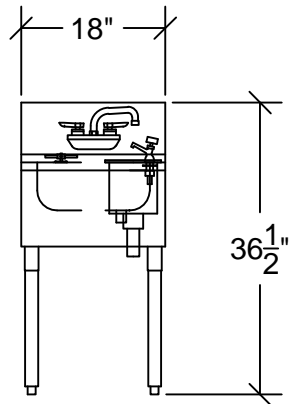
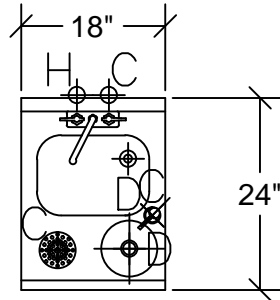


PLUMBING REQUIREMENTS:
 1-1/2" IPS DRAIN, SINK BOWL
 1-1/2" IPS DRAIN, DIPPERWELL
 1/2" IPS HOT & COLD WATER, 4" CENTER WALL FAUCET
 1/2" IPS COLD, PUSH-DOWN GLASS RINSER
 1/2" IPS COLD, DIPPERWELL FAUCET



"We Raise the Bar"

Krowne Metal Corp
 100 Haul Road
 Wayne, NJ 07470
 800-631-0442
 www.krowne.com

MODEL# :
KR18-MS12

ROYAL SERIES
 1800 2100

STANDARD SERIES
 1800 2100

MANU:
KROWNE METAL CORP

SCALE: 1/2" = 1'-0" DATE: 10.14.2016 JOB #:

1 OF 1

APPROVAL: