

# Model HO-3

## Table Top Pineapple Peeling & Coring Machine Operation Guide

This table top pineapple peeling & coring machine has all of these specifications:

- Foot print of 10"x15", 19.5" tall, 20.5" front to back
- Aluminum T6 6061 handle (1/4" thick)
- All stainless steel construction (304 grade s/s)
- All hardware is stainless steel (304 grade s/s)
- All plastics including grip, base, and slide blocks are virgin HDPE
- Base has 4 replaceable solid rubber suction cups
- **All parts are replaceable**
- Machine weighs 17 lbs.
- Different sized cutting assemblies are available: 84mm (7/8 Size Blade); 96mm (6/7 Size Blade - standard); 108mm (5/6 Size Blade); and 122mm (4/5 Size Blade)

**All grades of materials used to manufacture this machine are of FDA approved for direct food contact.**



**MADE IN USA**

**Mulligan Associates, Inc.**

**286 Barbados Drive, Jupiter, FL 33458**

**(800) 627-2886 / (561) 277-2466 Fax**

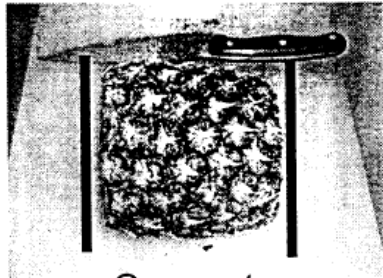
**[www.juicernet.com](http://www.juicernet.com)**

# **Operation Guide**

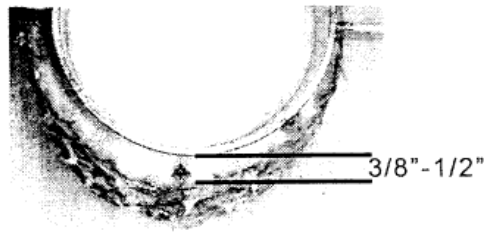
- 1. Cut top and bottom off parallel to each other. (Make sure to cut enough off so that the blade will start the cut on the meat of the pineapple).**
- 2. Lift the handle of the machine to the upmost position**
- 3. Place the pineapple under the blade and slowly lower the handle, making sure to center the outside blade to the center of the cut pineapple.**
- 4. Place two hands on the handle and firmly pull down until the blades contact the base.**
- 5. Remove the peel from the pineapple and then lift the handle up. This will push the peeled and cored pineapple from the blade and set it on the base.**
- 6. With your hand still on the handle, remove the peeled and cored pineapple.**
- 7. Caution! Cutting assemblies are very sharp. Never put your hands under the cutting assemblies without one hand on the handle, and never hold the pineapple while you are cutting the pineapple.**
- 8. Properly hand wash, rinse, and sanitize (follow your local health code standards).**

**WARNING!!! This machine is not designed to have the handle stay in the up position!!!!**

# Correct Prep for Tabletop Pineapple Corer



Correct



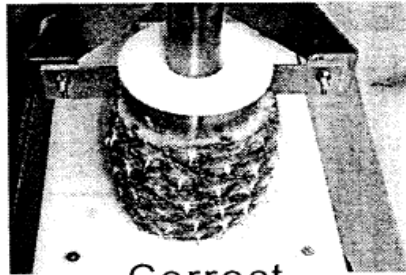
Correct



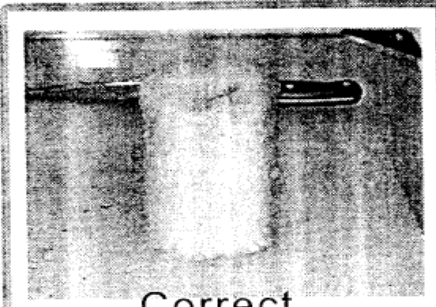
Uneven top/bottom cut



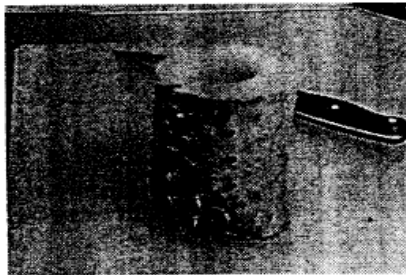
Not enough cut off top/bottom  
or blade too large



Correct



Correct



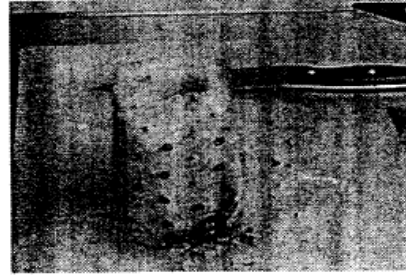
Off center/blade too large



Uneven top/bottom cut



Not enough cut off bottom  
or blade too large



Off center or  
blade too large