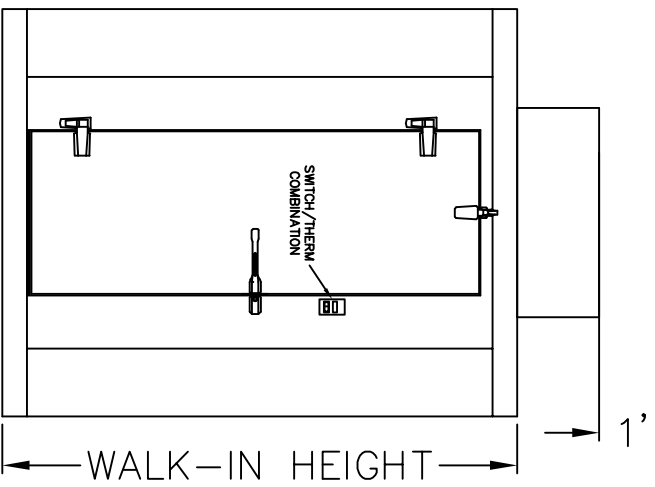


**\*\*CAPSULE PAK™  
LOCATION MAY VARY**



**BUILDING CEILING**



**VIEW -- A --**

**WALK-IN HEIGHT**

- 6'7" (WITH FLOOR)
- 7'4"** (LESS FLOOR) (STANDARD)
- 7'7"** (WITH FLOOR) (STANDARD)
- 8'4" (LESS FLOOR)
- 8'7" (WITH FLOOR)

**REFRIGERATION TYPE**

- CEILING CAPSULE PAK™** (STANDARD)
- REMOTE
- NONE

**LOCATION**

- INDOOR
- OUTDOOR

**TEMPERATURE**

- 35° F
- 10° F

**DOOR SWING**

- LEFT (SHOWN)
- RIGHT (DASHED)

**DOOR OPENING WIDTH**

- 26"** (STANDARD)
- 30"
- 36" (NOT AVAILABLE ON 6'7" HEIGHT)

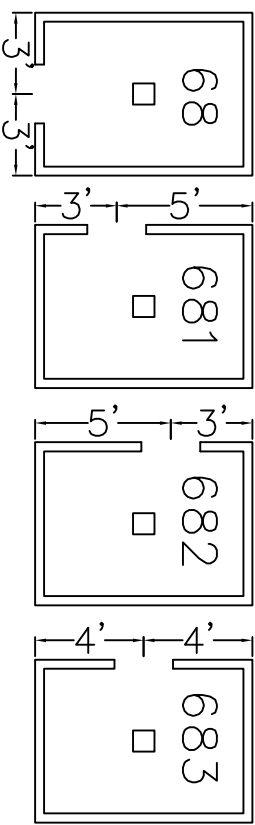
PLEASE RETURN THE APPROVED DRAWINGS AS SOON AS POSSIBLE TO PREVENT ANY DELAY IN FABRICATION.

- APPROVED
- APPROVED AS NOTED
- NOT APPROVED--RESUBMIT

SIGNED \_\_\_\_\_  
DATE \_\_\_\_\_

**IMPORTANT:**  
CHANGES MADE AFTER THE PRINT APPROVAL MAY INVOLVE ADDITIONAL CHARGES AND THE POSSIBILITY OF A REVISED SHIPPING DATE

**AVAILABLE DOOR LOCATIONS (CHECK ONE)**



**\*\*One foot of clearance is needed between the top of the Capsule Pak™ refrigeration system and the building ceiling. Please refer to page 2 of the Capsule Pak™ specification sheet located on the Nor-Lake website for specific dimensions**

REV (B DEVINE) -- 9/23/2020

REFRIGERATED SOLUTIONS GROUP	DRN BY: KB	APP BY:
DESCRIPTION: KOLD LOCKER/QUICK SHIP	DATE: 9/6/17	SC: NTS
SIZE: 6'0" x 8'0"	#: KL--68	