



Bon Chef

NEXUS TABLE SYSTEM • 2022

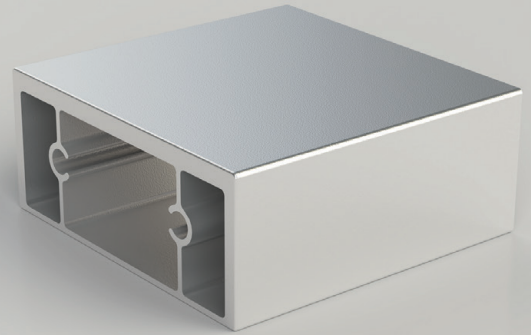
NEXUS *table system*

Bon Chef is proud to introduce the all new Nexus Table System. This groundbreaking furniture system is completely customizable. The frames are constructed of lightweight aluminum alloy and are entirely collapsible, allowing for unmatched ease of transport. A completely hidden wiring system and integrated electrical outlets allows for a clean, beautiful look - no messy, tangled wires! Choose your colors and finishes, then build out your tabletop with functional, drop-in tiles.





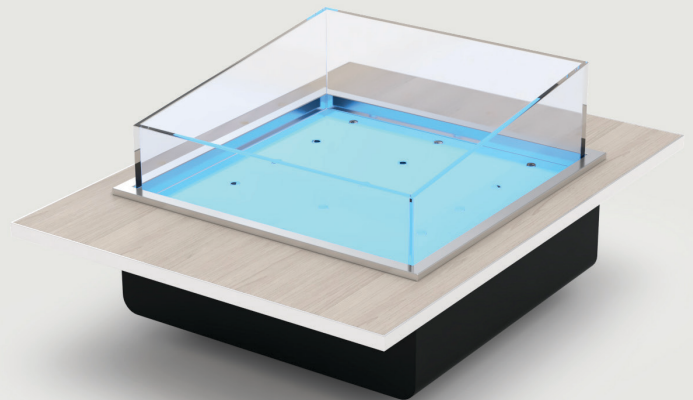
MOBILE, COLLAPSIBLE FRAME
Frames collapse for easy transport



LIGHTWEIGHT ALUMINUM ALLOY FRAME
One third the weight of stainless steel



INTEGRATED ELECTRICAL OUTLETS
Customer can utilize their own equipment



MODULAR, DROP-IN COMPONENTS
Easily swap a variety of equipment in and out



RETRACTABLE POWER CORDS
Tangle-free systems help maintain a clean space



HIDDEN WIRING SYSTEM
Hide all extra extension cords

MODERN.
MOBILE.
MODULAR.





1. FRAME FOLDS FLAT



2. FRAME POPS OPEN



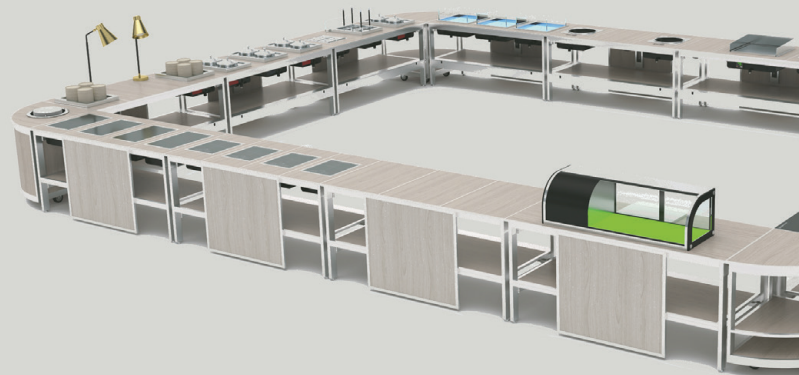
3. ADD MODULAR SHELF



4. ADD MODULAR PANEL



4. ADD SURFACE COMPONENTS



5. BUILD OUT YOUR SYSTEM



customize your look

Choose from multiple finishes to match your current decor: Silver & Oak or Black & Concrete.



endless combinations

Choose from a variety of drop-in, functional tabletop tiles to create a wide range of setups for different events.



transport carts

We offer a selection of transport carts to ensure the components of the Nexus system can be easily stored and moved to a variety of locations.



special order colors and finishes available

Bronze and Gold frames available by special order, as well as multiple laminate finish options.



COLLAPSIBLE DISPLAY FRAME

69.25" x 30" x 32.75"

NX-1-S

Silver Anodized Frame
with Oak Laminate

NX-1-B

Black Anodized Frame
with Concrete Laminate



COUNTERTOP - FULL SIZE

70.75" x 31.5" x 1"

NX-1-CT-S-O

Silver Anodized Frame
with Oak Laminate

NX-1-CT-B-C

Black Anodized Frame
with Concrete Laminate



COUNTERTOP - HALF SIZE

35.5" x 31.5" x 1"

NX-12-CT-S-O

Silver Anodized Frame
with Oak Laminate

NX-12-CT-B-C

Black Anodized Frame
with Concrete Laminate



COUNTERTOP - QUARTER SIZE

17.75" x 31.5" x 1"

NX-14-CT-S-O

Silver Anodized Frame
with Oak Laminate

NX-14-CT-B-C

Black Anodized Frame
with Concrete Laminate



FRONT PANEL - FULL SIZE

70.75" x 1" x 31.5"

NX-1-FP-S-O

Silver Anodized Frame
with Oak Laminate

NX-1-FP-B-C

Black Anodized Frame
with Concrete Laminate



FRONT PANEL - HALF SIZE

35.5" x 1" x 31.5"

NX-12-FP-S-O

Silver Anodized Frame
with Oak Laminate

NX-1-FP-B-C

Black Anodized Frame
with Concrete Laminate



FRONT PANEL - QUARTER SIZE

17.75" x 31.5" x 1"

NX-14-FP-S-O

Silver Anodized Frame
with Oak Laminate

NX-14-FP-B-C

Black Anodized Frame
with Concrete Laminate



SIDE PANEL

30" x 1" x 31.5"

NX-1-SP-S-O

Silver Anodized Frame
with Oak Laminate

NX-1-SP-B-C

Black Anodized Frame
with Concrete Laminate



BOTTOM SHELF PANEL

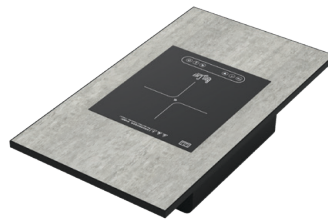
69.25" x 370.75" x 31.5" x 1"

NX-1-BS-S-O

Silver Anodized Frame
with Oak Laminate

NX-1-BS-B-C

Black Anodized Frame
with Concrete Laminate



INDUCTION TOP - QUARTER SIZE

17.75" x 31.5" x 7"

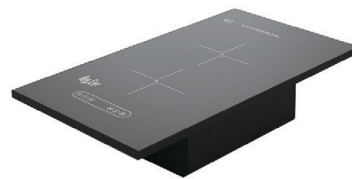
1800W, 120V

NX-14-IC-S-O

Silver Anodized Frame
with Oak Laminate

NX-14-IC-B-C

Black Anodized Frame
with Concrete Laminate



DOUBLE INDUCTION TOP - QUARTER SIZE

17.75" x 31.5" x 7"

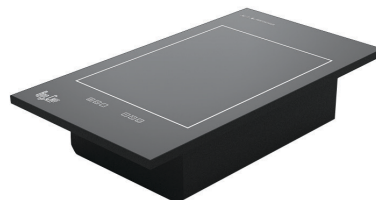
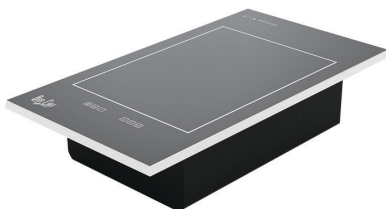
1800W, 120V

NX-14-DI-S

Silver Aluminum Edge

NX-14-DI-B

Black Aluminum Edge



RADIANT HEAT TOP - QUARTER SIZE

17.75" x 31.5" x 7"

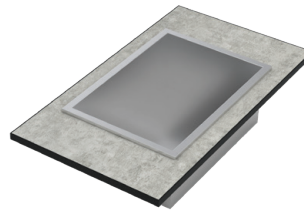
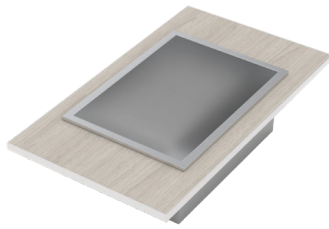
1000W, 120V

NX-14-R-S

Silver Aluminum Edge

NX-14-R-B

Black Aluminum Edge



**ICE STATION -
QUARTER SIZE**
17.75" x 31.5"

Drain Assembly

NX-14-IS-S-O

Silver Anodized Frame
with Oak Laminate

NX-14-IS-B-C

Black Anodized Frame
with Concrete Laminate



**CORNER SIDE TABLE -
EXPOSED SHELVES**
31.5" x 31.5" x 33.5"

NX-1-CR-S-O

Silver Anodized Frame
with Oak Laminate

NX-1-CR-B-C

Black Anodized Frame
with Concrete Laminate



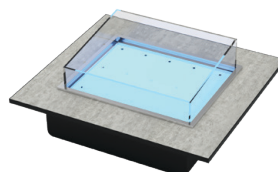
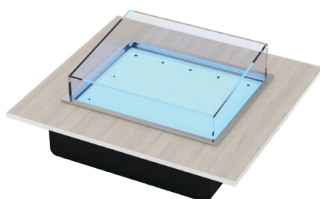
**CORNER SIDE TABLE -
ENCLOSED SHELVES**
31.5" x 31.5" x 33.5"

NX-2-CR-S-O

Silver Anodized Frame
with Oak Laminate

NX-2-CR-B-C

Black Anodized Frame
with Concrete Laminate



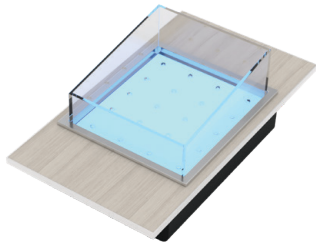
SEAFOOD DISPLAY - HALF SIZE
35.5" x 31.5"

NX-12-SD-S-O

Silver Anodized Frame
with Oak Laminate

NX-12-SD-B-C

Black Anodized Frame
with Concrete Laminate

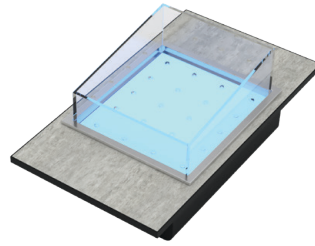


SEAFOOD DISPLAY -
QUARTER SIZE

17.75" x 31.5"

NX-14-SD-S-O

Silver Anodized Frame
with Oak Laminate



NX-14-SD-B-C

Black Anodized Frame
with Concrete Laminate

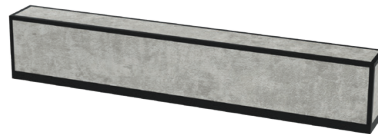


BARTOP

70.75" x 8" x 8"

NX-1-BAR-S-O

Silver Anodized Frame
with Oak Laminate



NX-1-BAR-B-C

Black Anodized Frame
with Concrete Laminate



BACKBAR KIT

63" x 19.75" x 71"

NX-BB-S

Silver Anodized Frame
with Oak Laminate



NX-BB-B

Black Anodized Frame
with Concrete Laminate



MODULE TRANSPORT CART

NX-MT
37.5" x 37.5" x 74"



FRAME TRANSPORT CART

NX-FT
51.25" x 37.5" x 80.75"

Bon Chef, Inc.
205 NJ-94, Lafayette, NJ 07848