



Super Erecta Pro®

Proven Metro wire that's more rust resistant.

Protect and clean-up like a pro.

15
YEAR
CORROSION
WARRANTY

Holds up to
800 lbs.
per shelf



Super Erecta Pro®

Guard against rough stuff to prolong shelf life.

Super Erecta Pro® is the most affordable shelving designed for the cooler. It features protective lift-off polymer shelf mats to resist abrasion from damaging containers and cleans up easily in a dish machine. Epoxy coated wire frames with polymer shelf mats resist corrosion in wet environments and have a 15-year corrosion resistance warranty. Pro gets proactive with Microban® antimicrobial protection built-in to mats, shelf frames and posts to help stay cleaner between cleanings.



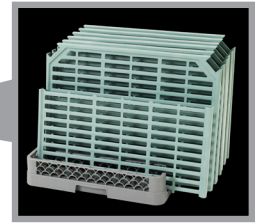
SUPPORTS GOOD
HACCP
PROCESSES

PROTECTION THAT LIVES ON
MICROBAN



Super Erecta Pro® Shelves

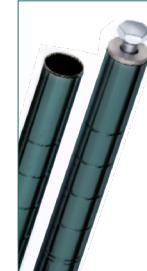
Nominal Width/Length (in)	Nominal Width/Length (mm)	Approx. Pkd. Wt. (lb) (kg)		Super Erecta Pro MetroSeal 3 Cat. No.
14x24	356x610	4.5	2	PR1424NK3
14x30	356x760	6.3	2.9	PR1430NK3
14x36	356x914	8.0	3.6	PR1436NK3
14x42	356x1060	10	4.5	PR1442NK3
14x48	356x1219	11.9	5.4	PR1448NK3
14x60	356x1524	14.9	6.8	PR1460NK3
14x72	356x1829	18.3	8.3	PR1472NK3
18x24	457x610	6.0	2.7	PR1824NK3
18x30	457x760	7.8	3.5	PR1830NK3
18x36	457x914	9.5	4.2	PR1836NK3
18x42	457x1060	11.3	5.0	PR1842NK3
18x48	457x1219	13.0	5.8	PR1848NK3
18x54	457x1372	14.8	6.6	PR1854NK3
18x60	457x1524	16.5	7.4	PR1860NK3
18x72	457x1829	19.8	8.8	PR1872NK3
21x24	530x610	8.0	3.6	PR2124NK3
21x30	530x760	9.5	4.2	PR2130NK3
21x36	530x914	11.3	5.0	PR2136NK3
21x42	530x1060	12.5	5.6	PR2142NK3
21x48	530x1219	14.3	6.4	PR2148NK3
21x54	530x1372	16.5	7.4	PR2154NK3
21x60	530x1524	18.3	8.1	PR2160NK3
21x72	530x1829	21.5	9.6	PR2172NK3
24x24	610x610	9.5	4.2	PR2424NK3
24x30	610x760	11.3	5.0	PR2430NK3
24x36	610x914	13.0	5.8	PR2436NK3
24x42	610x1060	14.0	6.3	PR2442NK3
24x48	610x1219	15.5	6.9	PR2448NK3
24x54	610x1372	18.3	8.1	PR2454NK3
24x60	610x1524	20.0	8.9	PR2460NK3
24x72	610x1829	23.3	10.4	PR2472NK3



Posts

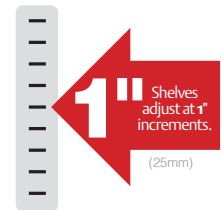
Stationary (with leveling bolts)

(in)	Actual Height (mm)	(lb)	Approx. Pkd. Wt. (kg)	Metroseal 3 Cat. No.
14-1/2	370	1	0.5	13PK3
34-1/2	875	2	0.9	33PK3
54-9/16	1385	3	1.4	54PK3
62-9/16	1590	3.5	1.6	63PK3
74-5/8	1895	4	1.8	74PK3
86-5/8	2200	5	2.3	86PK3



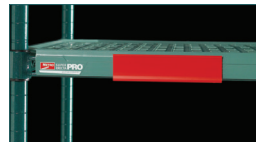
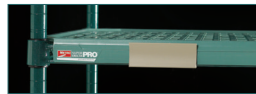
Mobile (for stem casters)

(in)	Actual Height (mm)	(lb)	Approx. Pkd. Wt. (kg)	Metroseal 3 Cat. No.
13-3/4	349	1	0.5	13UPK3
33-3/4	857	2	0.9	33UPK3
53-13/16	1366	3	1.4	54UPK3
61-13/16	1570	3.5	1.6	63UPK3
69-3/4	1772	3.8	1.7	70UPK3
73-7/8	1876	4	1.8	74UPK3
85-7/8	2181	5	2.3	86UPK3



Color Shelf Markers

Color	Length (in.)	Length (mm)	Approx. Pkd. Wt. (lbs.) (kg)		Cat. No.
Blue FISH	6	152	0.05	0.02	CSM6-BQ
Green PRODUCE	6	152	0.05	0.02	CSM6-GQ
Red REW MEAT	6	152	0.05	0.02	CSM6-RQ
Tan COOKED MEAT	6	152	0.05	0.02	CSM6-TQ
White DAIRY	6	152	0.05	0.02	CSM6-WQ
Yellow POULTRY	6	152	0.05	0.02	CSM6-YQ
Gray OTHER	6	152	0.05	0.02	CSM6-GRQ



Label Holders

Length (in.)	Length (mm)	Approx. Pkd. Wt. (lbs.) (kg)		Cat. No.
4	102	0.03	0.01	MQ04LH

8" (203mm) Polymer Shelf Divider

Nominal Length (in)	Length (mm)	Compatible with Shelf Depths	Approx. Pkd. Wt. (lbs.) (kg)		Cat. No.	
18	457	18, 21"	457, 530	2.25	1.0	MUD18-8
24	610	24"	610	2.75	1.3	MUD24-8

Casters

Diameter (in)	Diameter (mm)	Load Rating (lbs.)	Load Rating (kg)	Approx. Pkd. Wt. (lbs.) (kg)		Type	Horn	Wheel Tread	Cat. No.
5	127	200	91	2.75	1.2	Swivel	Plated	Resilient	5M
5	127	200	91	3	1.4	Swivel/Brake	Plated	Resilient	5MB
5	127	300	135	2.25	1.0	Swivel	Plated	Polyurethane	5MP
5	127	300	135	2.5	1.1	Swivel/Brake	Plated	Polyurethane	5MPB
5	127	300	135	2	0.9	Swivel	Polymer	Polyurethane	5PC
5	127	300	135	2	0.9	Swivel/Brake	Polymer	Polyurethane	5PCB



Visit www.metro.com or call 1-800-992-1776.



LO4-193 6/22

© 2022 InterMetro Industries Corporation, Wilkes-Barre, PA 18705
 *MICROBAN is a registered trademark of Microban Products Company. Microban Antimicrobial product protection inhibits the growth of mold, mildew, fungus, and bacteria that cause odor and stains on surfaces.



We put space to work.®

an Ali Group Company



The Spirit of Excellence