



# Instructions for **HINGED DOOR CABINET REPAIR KIT** (KIT # TA-36D)



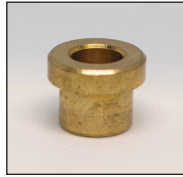
ADVANCE TABCO are designed and constructed for applications including Food Preparation, Cooking, Manufacturing, Material Handling, Laboratory Service and the like. ADVANCE TABCO does not recommend product use for activities employing harsh and active chemicals. Consult factory regarding unusual applications.

# INSTALLING REPLACEMENT PIN

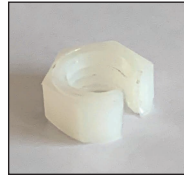
## Repair kit Contents (1 Kit Per Hinge)



(1) Hinge Pin  
With (1) Lock Nut



(1) Brass Insert  
Bushing



(1) White Nylon  
Locking Clip

### Tools Required:

Two adjustable Wrenches.

### Step 1:

Review the hinge that needs to be repaired. Insure there is now a visible hole where the welded pin broke away from. In some instances, you may need to drill or punch out the remaining broken pin (Figure 1).

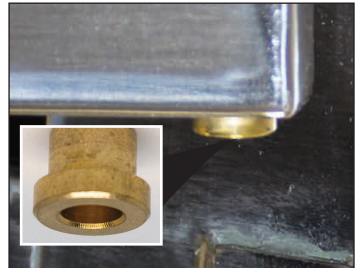


Bottom Hinge With Hole

(Figure 1)

### Step 2:

Retrieve the removed door. Inspect the Brass Insert Bushing for the top or bottom hinge you are repairing. If it looks damaged or worn, replace it with a new one from the kit (Figure 2).



(Figure 2)

### Step 3:

Attach Hinge Pin by placing threaded side through the hole on the hinge bracket (Figure 3). Place Lock Nut onto the threaded Pin and tighten using 2 wrenches (Figure 4).



(Figure 3)

(Figure 4)

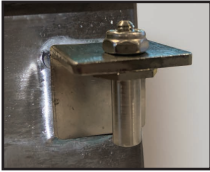
### Step 4:

Continue to next page for hinge door installation and Locking Clip install.

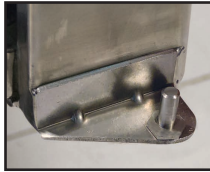
# Installation Instructions For HINGED DOOR UNITS

## Step A:

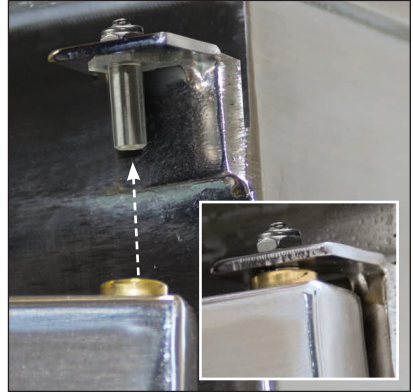
Align Brass Insert Bushing at top of door with upper Hinge Pin. Slide Insert onto pin. **(Figure A).**



Top Hinge



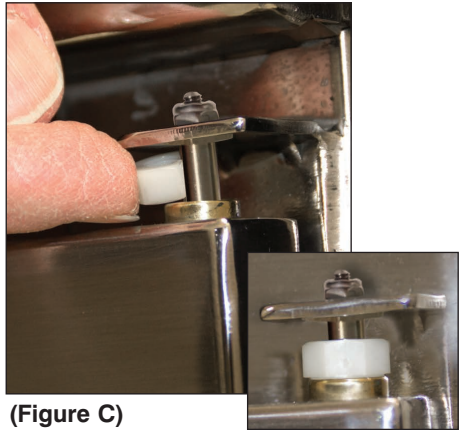
Bottom Hinge



**(Figure A)**



**(Figure B)**



**(Figure C)**

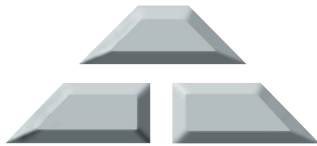
## Step B:

While keeping the door on the upper Hinge Pin, align the bottom Hinge Pin, align the bottom Brass Insert Bushing with bottom the Hinge Pin and lower the door into it **(Figure B).**

## Step C:

Secure door by pushing White Nylon Locking Clip onto upper Hinge Pin.

**IMPORTANT NOTE:** Nylon Locking Clip **MUST** be on **TOP PIN ONLY** not used on bottom hinge **(Figure C).**



**ADVANCE TABCO®**  
SMART FABRICATION™

Hauppauge, New York 11788

[www.advancetabco.com](http://www.advancetabco.com)

800-645-3166