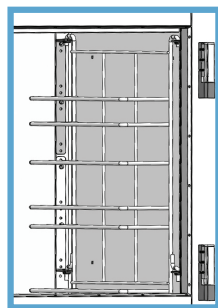
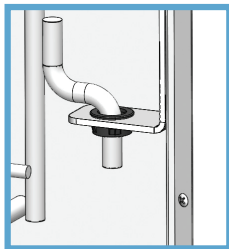


EZ-CLEAN TRAY RACKS

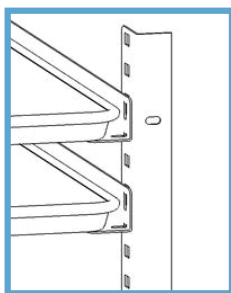


EZ-CLEAN TRAY RACKS

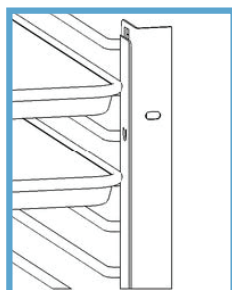
| DESCRIPTION | SPACING | | | |
|---|---------|--------|--------|----|
| | 25/8" | 3 1/2" | 4 1/8" | 5" |
| Stainless steel for bottom support of: (1) 18" x 26" pan, (2) 14" x 18" pans, or (2) 12" x 20" pans (one pair accommodates one half section) | | | | |
| Behind full-height door, all models | 18 | 14 | 12 | 10 |
| Behind upper half-height door, all models | 9 | 7 | 6 | 5 |
| Behind lower half-height door, all models | 9 | 7 | 6 | 5 |

*Mix & match tray racks to meet your unique needs

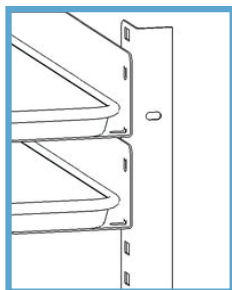
#1 TRAYSLIDES



#4 TRAYSLIDES



UNIVERSAL TRAYSLIDES



TRAYSLIDES

| DESCRIPTION | SPACING | | | |
|---|---------|----|----|----|
| #1 TRAYSLIDES | | | | |
| Stainless-steel angle type for bottom support of: (1) 18" x 26" pan or (2) 14" x 18" pans | 2" | 3" | 4" | 5" |
| Behind full-height door, all models | 28 | 19 | 14 | 11 |
| Behind upper half-height door, all models | 13 | 9 | 7 | 5 |
| Behind lower half-height door, all models | 13 | 9 | 7 | 5 |
| Behind TU-Series undercounter door | 9 | 6 | 5 | 4 |

#4 TRAYSLIDE RACKS

| | | | | |
|---|--------|--|--|--|
| Plated steel rod type for rim support of: (1) 18" x 26" pan (one pair accommodates one half section) | 1 1/2" | | | |
| Behind full-height door, all models | 38 | | | |
| Behind upper half-height door, all models | 18 | | | |
| Behind lower half-height door, all models | 18 | | | |

*Not available for 1 section R/A Dual Temp models

UNIVERSAL TRAYSLIDES

| | | | |
|---|----|----|----|
| Stainless-steel angle type for bottom support of: (1) 18" x 26" pan or (2) 14" x 18" pans or (2) 12" x 20" pans For heated cabinets reduce available number of trayslides by 1 (full door and the upper section of a half-door) | 4" | 5" | 6" |
| Behind full-height door, all models | 14 | 11 | 9 |
| Behind upper half-height door, all models | 6 | 5 | 4 |
| Behind lower half-height door, all models | 7 | 5 | 4 |
| Behind TU-Series undercounter door | 5 | 4 | 3 |

NOTES:

- For all after market parts, call Traulsen parts department at 800.825.8220.
- All 26" deep models are available with shelves only. Optional trayslides are not available.
- Deduct (1) trayslide per door from the above quantities for sliding glass door models.
- Please consult factory for special interior arrangements on 'DUT' 24" and 48" wide models.
- Universal trayslides are not available for one, two, and three section 'N-width' models supplied with optional display lights.
- Trayslides are not available for one and two section 'D-width' models supplied with optional LED lights.
- All racks, trayslides, and shelves are factory-installed.
- Reduce trayslide quantity by (1) for one section dual temperature models.

SHELVES (SOME SHELVES N/A FOR HEATED CABINETS)

| CAPACITY | STD. | MAX. |
|--|------|--------------------|
| Behind full-height door mounted on standard shelf pins | 3 | 9 |
| Behind half-height door mounted on standard shelf pins | 3 | 8 |
| Behind full-height door mounted on optional pilasters | 3 | 13 (4" spacing) |
| Behind half-height door mounted on optional pilasters | 3 | 12 (4" spacing) |
| Behind TU-Series undercounter door | 2 | 3 |