

TVL Economy Series Cart Operating & Maintenance Manual



Models: TVL2T1D10
TVL2T1D12
TVL2T1D14
TVL2T1D16
TVL2T1D18
TVL2T1D20

TVL2T1D10
Shown with optional 3-sided top rail

TVL Economy Series Cart:

SECTION 1: INTRODUCTION		SECTION 3: MAINTENANCE & OPTIONS	
Introduction.....	2	Rack Adjustments	3
Freight Damage Claims plate.....	2	Top Rail Installation	3
SECTION 2: INFORMATION		Pass Thru Door Option Installation	4
Information.....	2	Cleaning	5
Identification Plate	2	SECTION 4: EXPLODED VIEW	
		Rack Adjustments	6
		WARRANTY	7

For Service Information call 1.888.673.4639

Please provide following information:

- Designation number
- Identification number

INTRODUCTION

Congratulations! You have just purchased one of the finest pieces of equipment on the market today. Before installing or operating your new Dinex equipment you should read through this material. This manual should be retained for further reference as it contains operation instructions and warranty information. Should you have any questions concerning the Equipment, please call the 24/7 Dinex Hotline at 1-888-673-4639.

! IMPORTANT: *For your safety, read and follow all cautions, information, and warnings.*

FREIGHT DAMAGE CLAIMS

Your TVL Series Cart was carefully inspected and packed before leaving our factory. The transportation company assumes full responsibility for the safe delivery of this equipment. Dinex cannot assume responsibility for damage or loss incurred during transit. **Visible damage or loss should be noted on the freight bill and signed by the person making the delivery.**

A freight claim should be filed immediately with the transportation company. If damage is unnoticed or concealed until the equipment is unpacked, notify the transportation company immediately and tell them you want to file a concealed damage claim. This must be done within fifteen (15) days after delivery was made. Be sure to retain all packing materials and cartons.

! IMPORTANT: *All packing materials should be retained for return shipment.*

APPLICATION AND USE

The Equipment is for commercial use in the food service industry.

! ATTENTION: *Installation of this equipment should be performed only by persons qualified or licensed to install electrical equipment.*

- *Adjustments and service work should be performed only by qualified service technicians.*
- *This equipment is intended for commercial use only. Not for household use.*
- *Use of other than genuine Dinex replacement parts or service work performed by those other than authorized Dinex service agents will void the warranty.*
- *Do not use corrosive or chlorinated cleaners on the equipment. Use only mild detergents.*

SAFETY

The instructions contained in this manual provide important guidelines for the Equipment user regarding a correct and safe installation. Particular attention should be paid to the warnings given in various parts of this manual.

INFORMATION

INFORMATION ON THIS SECTION

When contacting service please provide the following information located on the product identification plate:

- Model number
- Serial number of the equipment (identification plate)
- Description of the part
- See Manual for item number

IDENTIFICATION PLATE



Different serial numbers for each unit.

MAINTENANCE AND OPTIONS

RACK ADJUSTMENTS

The TVL Cart has the built in ability to have the racks adjusted in intervals of 1.69 inches to allow for the use of taller or shorter trays.

To remove a rack lift up on rack slide and then rotate it 90° upward and pull out from the side bar. To install in the desired location simply reverse this procedure. (See Figure 1)

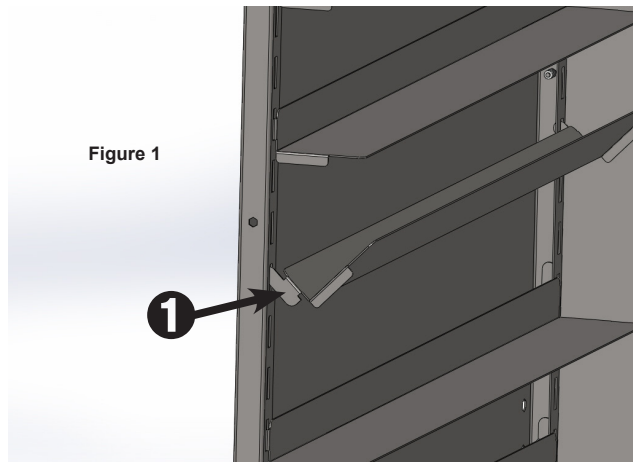


Figure 1

SHELF BRACKET ADJUSTMENT/REMOVAL DETAIL

REP.	QTY.	DESCRIPTION	REFERENCE
1	1	SHELF BRACKET	DX16505-3802

TOP RAIL OPTION INSTALLATION

The TVL Cart comes with the option of field installing a 3-sides Top Rail.

Step 1: The TVL cart is delivered with 5/16-18 Flat Head slotted screws and nuts installed in the 4 top rail mounting holes. Remove this hardware using a standard flat blade screwdriver and 3/8" wrench and discard.

Step 2: Assemble the top rails as indicated and attach to the top from the inside of the cabinet through the predrilled holes with the M10-20 bolts and washers supplied in the kit using a 15mm socket or wrench. (See Figure 2)

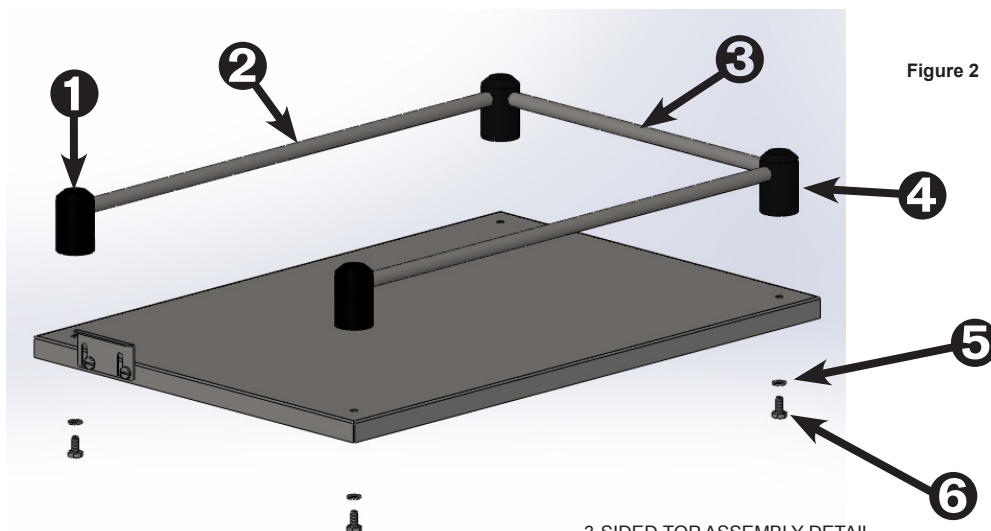


Figure 2

3-SIDED TOP ASSEMBLY DETAIL

REP.	QTY.	DESCRIPTION	REFERENCE
1	2	END RAIL SUPPORT	DX18617-0053
2	2	SIDE RAIL	DX16050-0461
3	1	FRONT/REAR RAIL	DX16050-0462
4	2	CORNER RAIL SUPPORT	DX18617-0052
5	4	WASHERS, SS, M10	DX18121-0077
6	4	BOLT, SS, M10-20 X 19 mm	DX18058-0093

PASS THRU DOOR OPTION INSTALLATION

The TVL Cart comes with the option of field installing a pass thru door.

Step 1: Remove the rear panel. To do this remove the rear panel by removing the sheet metal screws using a #2 Phillips screwdriver. (See Figure 3)



Figure 3

BACK PANEL ASSEMBLY DETAIL

Step 2: Remove the plastic plugs installed in the 4 hinge holes in the side of the cabinet and the 2 plugs installed in the top for the transport latch. These are removed by simply pulling them out of the holes.

Step 3: Install the door hinges to the cabinet and the door with the 1/4-20 bolts supplied in the kit using a 7/16" socket or wrench. (See Figure 4)

Step 4: Install the transport latch using the 1/4-20 Shoulder bolts supplied in the kit using a standard flat blade screwdriver. (See Figure 4)

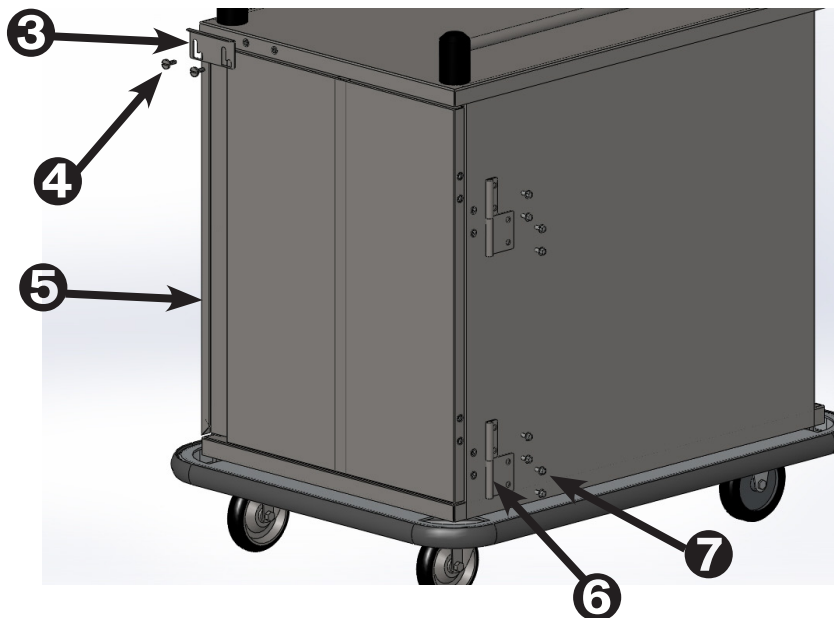


Figure 4

DOOR LATCH ASSEMBLY DETAIL

REP.	QTY.	DESCRIPTION	REFERENCE
1	1	SCREW, SS, SHEET METAL	DX18058-0052
2	1	REAR PANEL	DX16505-3798
3	1	TRANSPORT LATCH	DX16503-6153
4	2	SHOULDER SCREW, 1/4-20	DX18056-0011
5	1	DOOR ASSEMBLY	DX16006-0655
6	2	DOOR HINGE ASSEMBLY	DX18304-0235
7	8	BOLT, SS, 1/4-20 X 1/2	DX18051-0007

GENERAL CLEANING

Open doors and lock them in the open position and remove the drain plug (See Figure 5) to clean, sanitize and dry the inside of cart thoroughly. After cleaning, replace the racks and drain plug. Close doors to clean outside of cart and using 2 or more people gently tilt back cart and lay down on its back using support bars to clean the undercarriage.

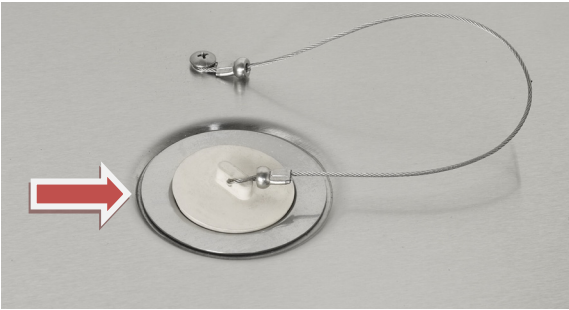
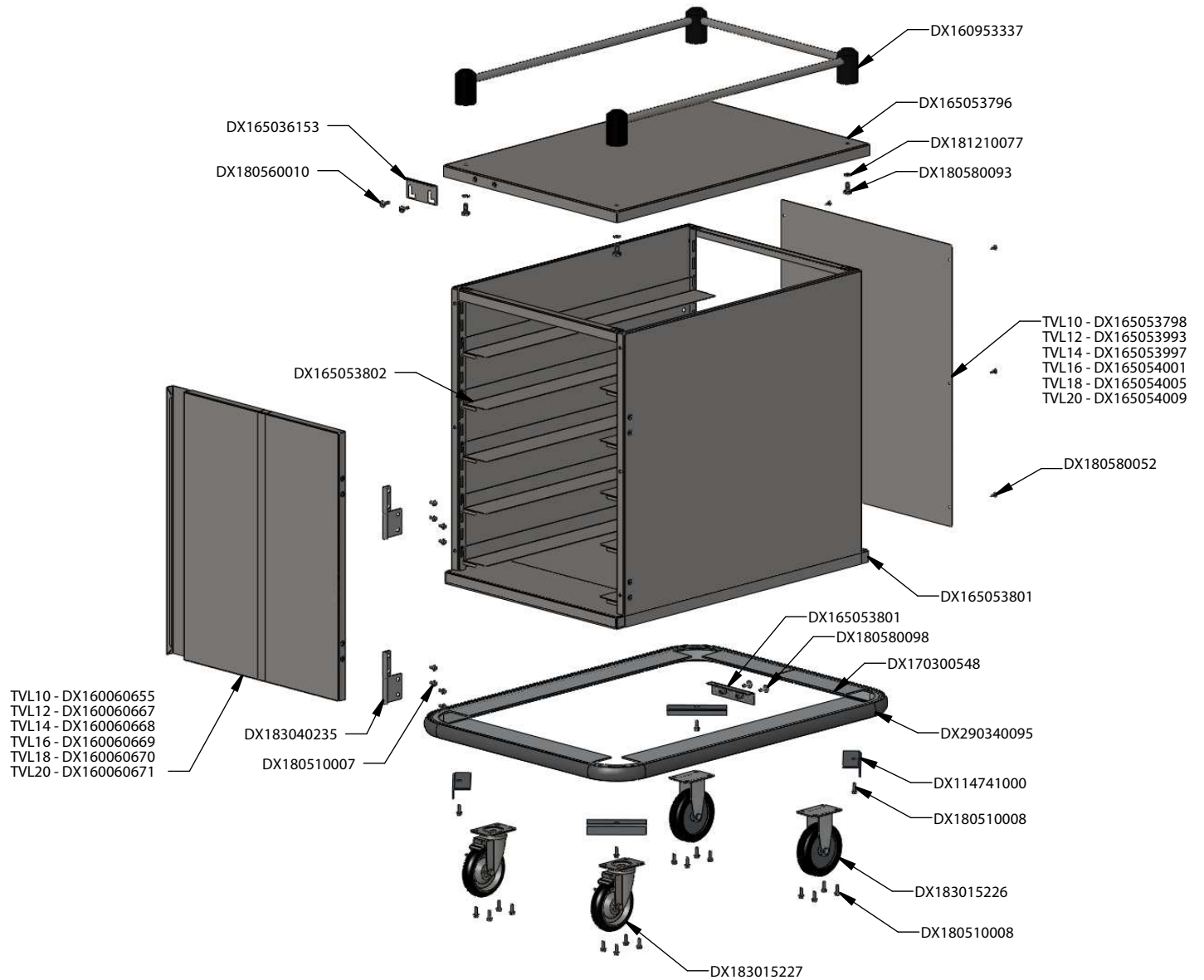


Figure 5

! ATTENTION:

- *Do not use corrosive or chlorinated cleaners on the equipment.*
- *Failure to do so could result in damage to the equipment*

EXPLODED VIEW



DINEX WARRANTY

These Warranties cover the following CARLISLE | DINEX ("Dinex") equipment products (the "Warranted Products"):

- Rethermalization Equipment Products
- Induction Heating System Products (excluding Induction Bases covered under separate warranty)*
- Milk Cooler Products
- Ice Cream Freezer Products
- Air Curtain Refrigerator Products
- Blast Chiller Products
- Hot/Cold Food Counter Products
- Plate, Rack and Tray Dispenser Products
- Plate Heater Products
- Base Heater Products
- Drying and Storage Rack Products
- Starter Station Products
- Conveyer Products
- Tray and Other Cart Products

Warranted Products also includes any other Equipment System Products identified on Dinex's website (www.dinex.com) from time to time.

Standard Warranty. Except as indicated otherwise below, Dinex warrants that the Warranted Products will be free from defects in title, material and workmanship under normal use and service and will perform substantially in accordance with Dinex's written technical specifications for the Warranted Products (as such specifications exist on the date the Warranted Products are shipped) (the "Product Specifications"). This warranty covers both parts and labor and is available only to end-users (the "Customers") that purchase the Warranted Products from Dinex or its authorized distributors. For the purpose of these warranties, a defect is determined by Dinex after its good faith investigation.

Dinex Software. In addition to the other warranties set forth herein, with respect to Dinex's licensed software, Dinex warrants that it has the right to license or sublicense the software to Customer for the purposes and subject to the terms and conditions set forth in Dinex's standard terms and conditions.

Supplies and Accessories. Dinex's warranty for its supplies and accessories that are shipped with Warranted Products is covered by a separate warranty statement, which is available at www.dinex.com.

Services. Dinex warrants that any service it provides to Customer will be performed by trained individuals in a workmanlike manner.

DURATION

Dinex provides a one year warranty for the Warranted Products*. The warranty period begins on the date the Warranted Products are shipped to Customer. The warranty period for any Warranted Product or part furnished to correct a warranty failure will be the unexpired term of the warranty applicable to the repaired or replaced Warranted Product. *Turbo•Temp and Smart•Therm Induction Chargers are Warranted for two years.

REMEDIES

If Customer promptly notifies Dinex of Customer's warranty claim and makes the Warranted Product available for service, Dinex will, at its option, either repair or replace (with new or exchange replacement parts) the non-conforming Warranted Product or parts of the Warranted Product. With respect to Dinex's licensed software, Dinex will, at its option, either correct the non-conformity or replace the applicable licensed software. Warranty service will be performed without charge from 8:00 a.m. to 5:00 p.m. CST, Monday - Friday, excluding Dinex

holidays, and outside those hours at Dinex's then prevailing service rates and subject to the availability of personnel. With respect to Dinex's warranty for the services it provides to Customer, Customer's exclusive remedy shall be the re-performance of the services by Dinex. The foregoing remedies are Customer's exclusive remedies and Dinex's sole liability for warranty claims under this warranty statement. This exclusive remedy shall not have failed of its essential purpose (as that term is used in the Uniform Commercial Code) as long as Dinex remains willing to repair or replace defective Warranted Products within a commercially reasonable time after being notified of Customer's warranty claim.

LIMITATIONS

THESE WARRANTIES ARE EXCLUSIVE AND IN LIEU OF ALL OTHER WARRANTIES, WHETHER WRITTEN, ORAL, EXPRESSED, IMPLIED OR STATUTORY. EXCEPT AS PROVIDED HEREIN, NO EXPRESS OR IMPLIED WARRANTIES, INCLUDING BUT NOT LIMITED TO IMPLIED WARRANTIES OF MERCHANTABILITY, FITNESS FOR A PARTICULAR PURPOSE, QUIET ENJOYMENT, SYSTEM INTEGRATION AND DATA ACCURACY, WILL APPLY. THERE ARE NO WARRANTIES THAT EXTEND BEYOND THOSE DESCRIBED IN THIS DOCUMENT AND NO PRIOR STATEMENTS BY ANY OF DINEX'S REPRESENTATIVES SHALL MODIFY OR EXPAND THESE WARRANTIES. DINEX AND DINEX'S AFFILIATES AND REPRESENTATIVES SHALL HAVE NO LIABILITY TO CUSTOMER FOR (1) ANY SPECIAL, PUNITIV E, INCIDENTAL, INDIRECT OR CONSEQUENTIAL DAMAGES ARISING OUT OF OR IN CONNECTION WITH THE WARRANTED PRODUCTS, REGARDLESS OF WHETHER SUCH LIABILITY SHALL BE CLAIMED IN CONTRACT, TORT, EQUITY OR OTHERWISE, (2) ANY ASSISTANCE NOT REQUIRED UNDER DINEX'S QUOTATION OR (3) ANYTHING OCCURRING AFTER THE WARRANTY PERIOD ENDS.

DINEX'S STANDARD WARRANTIES ONLY APPLY TO END-USER-PURCHASERS LOCATED IN THE UNITED STATES AND CANADA. ANY SALE TO END-USER-PURCHASERS OUTSIDE THE UNITED STATES AND CANADA WILL BE SUBJECT TO COMMERCIAL TERMS SPECIFICALLY AGREED BY DINEX AND THE END-USER PURCHASER. DINEX MAKES NO WARRANTY, EXPRESS OR IMPLIED, TO END-USER-PURCHASERS OUTSIDE THE UNITED STATES OR CANADA UNLESS OTHERWISE EXPRESSLY AGREED IN WRITING.

These warranties do not apply to, and Dinex shall not have any obligation to Customer hereunder with respect to, any warranty claim resulting from or arising out of: (i) normal wear and tear; (ii) damage caused by shipping or accident; (iii) damage caused by improper installation, repair or alteration not performed by Dinex; (iv) the use of the Warranted Product in combination with any software, tools, hardware, equipment, supplies, accessories or any other materials or services, not furnished by Dinex or recommended in writing by Dinex; (v) the use of the Warranted Product in a manner or environment, or for any purpose, for which Dinex did not design or license it, or inconsistent with Dinex's recommendations or instructions on use including, but not limited to, power supply requirements identified in Product Specifications; (vi) any alteration, modification or enhancement of the Warranted Product by Customer or any third party not authorized or approved in writing by Dinex; (vii) Warranted Product manufactured to meet customer specifications or designs; or (viii) any accessories or supplies or other equipment or products that may be delivered with the Warranted Product .

In addition, these warranties do not cover: (i) Any defect or deficiency (including failure to conform to Product Specifications) that results, in whole or in part, from any improper storage or handling, failure to maintain the Warranted Products in the manner described in any applicable instructions or specifications, inadequate backup or virus protection or any cause external to the Warranted Products or beyond Dinex's reasonable control, including, but not limited to, power failure and failure to keep Customer's site clean and free of dust, sand and other particles or debris; (ii) the payment or reimbursement of any facility costs arising from repair or replacement of the Warranted Products; (iii) any adjustment, such as alignment, calibration, or other normal preventative maintenance required of Customer; and (iv) expendable supply items.

Please confirm that you have the most current specification sheet by visiting www.carlislefsp.com.
Dinex reserves the right to change specifications and product design without notice.
Such revisions do not entitle the buyer to corresponding changes, improvements,
additions or replacements for previously purchased equipment.

Printed in USA

© 2013 Carlisle FoodService Products
Oklahoma City, OK 73131
www.carlislefsp.com | 800-654-8210

Manual No. TVL Cart

DINEX[®]
A **CARLISLE** COMPANY