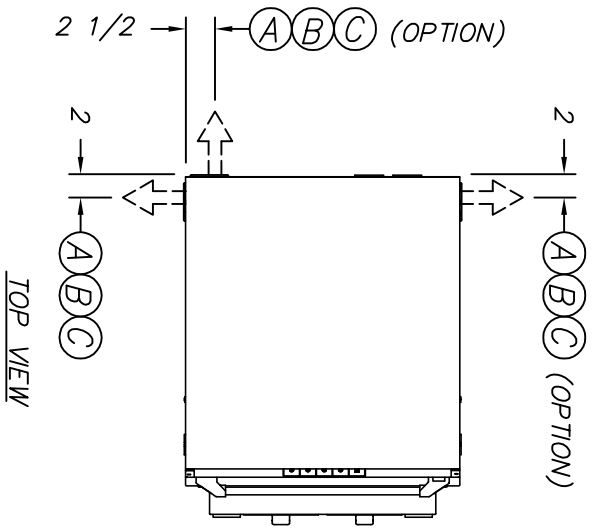
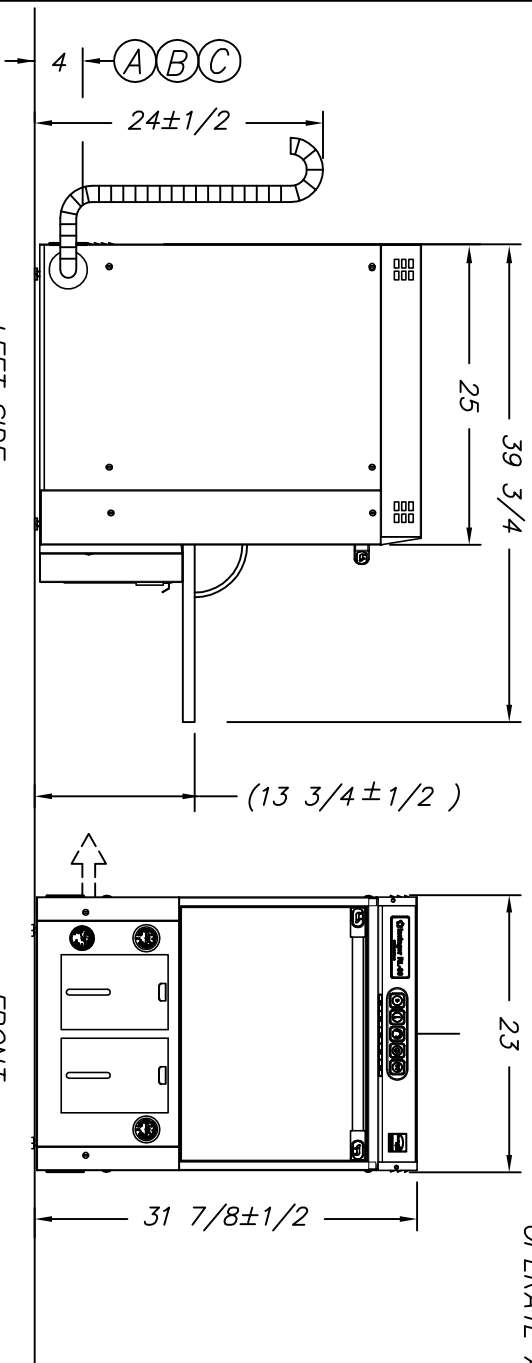


INSTALLATION CONNECTIONS		
LTR	DESCRIPTION	SIZE
A	HOT WATER SUPPLY - 110° F MIN / 140° F MAX.	3/4" FPT x 3.5 FT LG. FLEX HOSE
B	ELECT: 3.4KW MAX OPERATING, 18 FLA ON 208/1/60 4.2KW MAX OPERATING, 20 FLA ON 220-240/1/60	10-3C x 8 FT LG SJ CABLE WITH NEMA L6-30P
C	DRAIN CONNECTION (SEE NOTE 2). 24" MAX HEIGHT	3/4" x 4 FT LG. FLEX HOSE



TOP VIEW

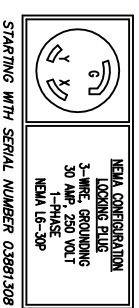


LEFT SIDE

FRONT

NOTE 1
DRAIN CONNECTION ELEVATION MUST BE 24" A.F.F. OR LESS


- NOTES:**
1. CABLE WITH NEMA L6-30P PLUG IS PROVIDED
 2. DRAIN HOSE END HAS 3/4" ID BY 1" DEEP FLEXIBLE RUBBER CUFF.
 3. WASH TANK CAPACITY 4.75 GAL.
 4. FINAL RINSE CONSUMPTION 0.79 GAL/CYCLE.
 5. CLEARANCE BETWEEN RACK AND UPPER WASH/RINSE ARM IS 11-3/4".
 6. 1HP (.75KW) WASH PUMP.
 7. WASH HEAT 2.1/2.6KW 208/240V
 8. BOOSTER HEAT 2.6/3.5KW 208/240V
 9. WASH HEAT & BOOSTER HEAT DONOT OPERATE AT SAME TIME.



INSTALLATION AND LAYOUT DETAIL

Information and Specifications Subject to Change Without Notice.

THE INFORMATION ON THIS DRAWING IS THE PROPERTY OF INSINGER AND IS NOT TO BE DISCLOSED TO ANY OTHER PARTY WITHOUT THE WRITTEN PERMISSION OF INSINGER. INFORMATION FOR USE IN REPLICATING OR IDENTICAL PART, COMPONENT OR SYSTEM. ANY VIOLATION OF THIS SYSTEM OR IDENTICAL PART, COMPONENT OR MACHINE COMPANY SHALL SUBJECT THE PARTY RESPONSIBLE TO APPROPRIATE LEGAL ACTION.


Insinger
 AUTOMATIC UNDERCOUNTER DISHWASHING MACHINE
 Philadelphia, PA 19135
 (215) 624-4800
 FAX (215) 624-6966
 DRWN: DBC 10.30.06 SCALE 3/4" = 12"
 REV: ALB 08.08.12 DWG. NO. RL-30
 FILE: STD\RL-30