

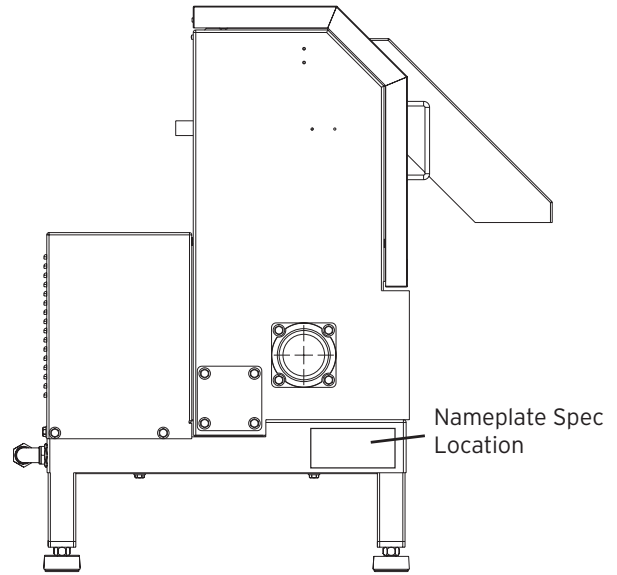


Ordering Parts

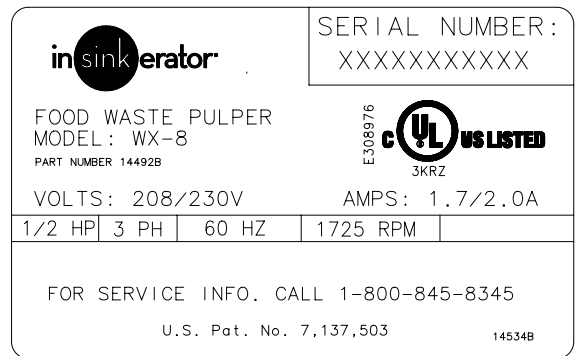
- Order by **part** number, not by **code** number
- Include information from nameplate specification (see figures at right)
- Complete model number (ex: WX-8)
- Complete serial number (ex: XM0000000)

Order parts from:

- InSinkErator
1250 International Drive
Mount Pleasant, WI 53177
 - Foodservice and Tech Support
800.845.8345



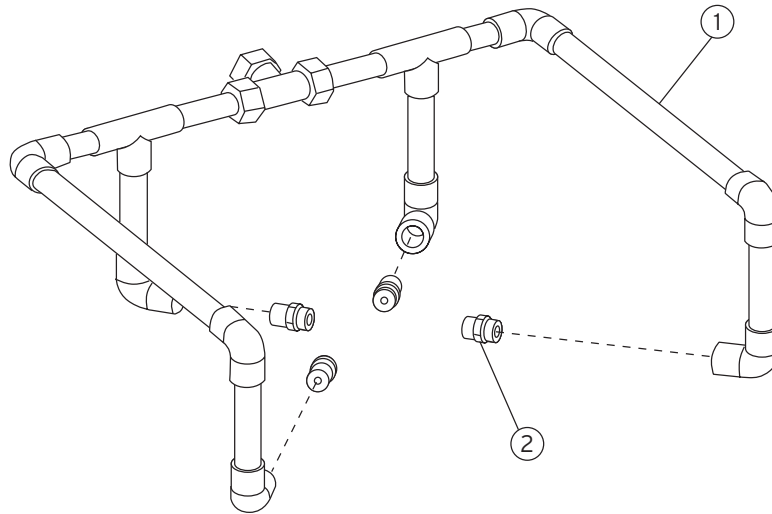
SAMPLE SPEC PLATE



Unit Specifications and Identification

MODEL #	SPECIFICATION
WX-8	208-230V / 3 Phase
WX-9	460V / 3 Phase
WX-10	415V / 3 Phase
WX-11	380V / 3 Phase

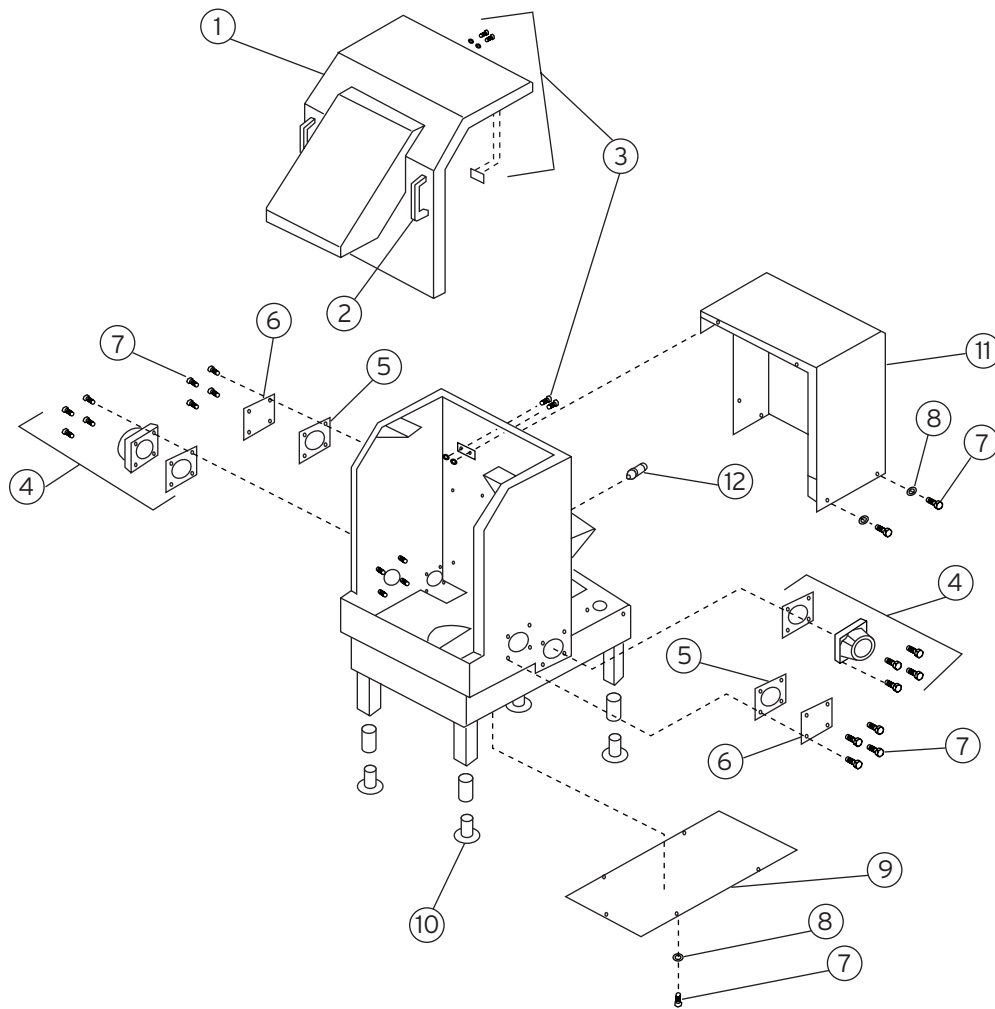
Plumbing



REPAIRS - WX-8, WX-9, WX-10, AND WX-11

CODE #	DESCRIPTION	QTY	PART #
1	Tube Assembly (Includes 14683)	1	14682
2	Spray Nozzle	4	14683

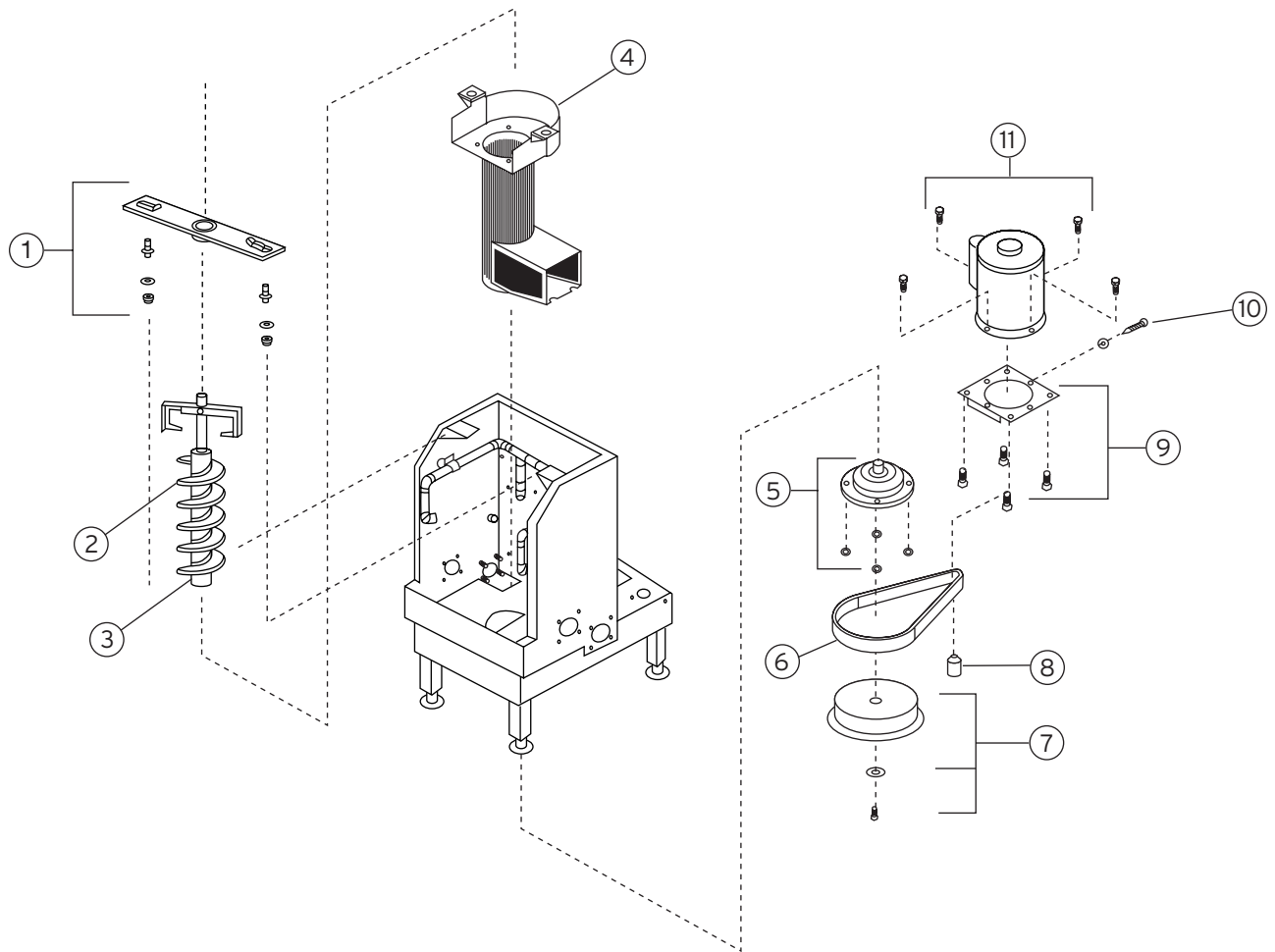
Cabinet



WX-8, WX-9, WX-10 AND WX-11
PART #

CODE #	DESCRIPTION	QTY	PART #
1	Discharge Chute	1	14678
2	Handle, Discharge Chute	2	N/A
3	Interlock Assembly	1	14668
4	Inlet/Outlet Kit	1	14679
5	Inlet/Outlet Gasket	1	14681
6	Inlet/Outlet Cap	1	14680
7	Bolt 1/4-20 x 1/2 SS	1	14698
8	Washer	1	N/A
9	Belt, Cover WX	1	14677
10	Foot - Adjustment	1	14675
11	Motor Cover	1	14676
12	Strain Relief	1	14697

Cabinet



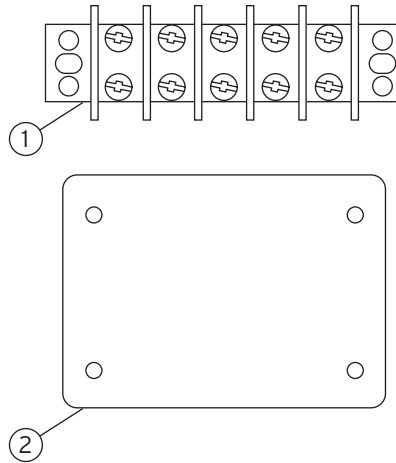
WX-8, WX-9, WX-10 AND WX-11
PART #

CODE #	DESCRIPTION	QTY	PART #
1	Bearing Bracket	1	
2	Auger Brush	2	14426
3	Auger	1	
4	Auger Screen	1	14665
5	Auger Drive Assembly	1	14671
6	Auger Belt	1	
7	Auger Pulley	1	14674
8	Motor Pulley	1	14673
9a	Motor Bracket - 1 Phase	1	N/A
9b	Motor Bracket - 3 Phase	1	N/A
10	Tension Screw	1	N/A
11a	Motor - 115/208-230V / 1 Phase	1	N/A
11b	Motor - 208-230/460V / 3v Phase	1	14666

Electrical Controls

MODEL #	SPECIFICATION	CONTROL CENTER
WX-8	208-230V / 3 Phase	WX-101A-5
WX-9	460V / 3 Phase	WX-101A-6
WX-10	415V / 3 Phase	WX-101A-7
WX-11	380V / 3 Phase	WX-101A-6

REPAIRS - WX-8, WX-9, WX-10, AND WX-11



CODE #	DESCRIPTION	QTY	PART #
1	Terminal Block	1	14670
2	Terminal Block Cover	1	14669
3	Terminal Cover Gasket	1	14700

