

**HUSSMANN®**

---

Specialty



DELIGHT

# GP Series Pastry Cases

Ambient Self Service Pastry Merchandiser

---

[www.husmann.com](http://www.husmann.com)

# Ambient Self Service Pastry Merchandiser

## GP Series Pastry Case

### Multi-Functional Merchandising Design

- High capacity merchandiser in a small footprint.
- Excellent for convenience stores and other formats.
- Product flexibility to meet changing menus throughout the day.
- Superior pastry visibility: Frameless door, LED lighting and shelf placement flexibility.



Optional package ledge shown above

### Functional Design

Trash, tissue, bag and box designed into front package ledge, LED lighted shelves



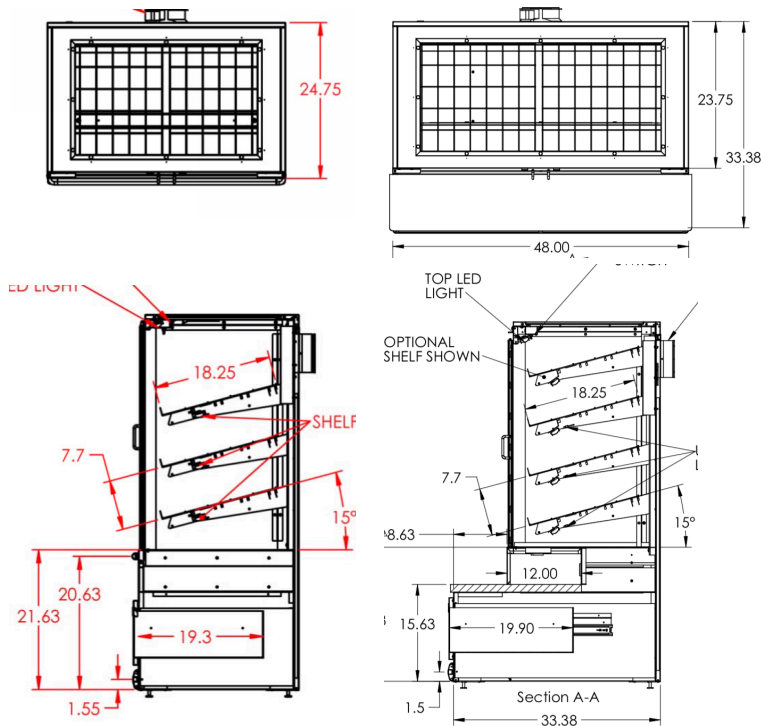
### Shopper Friendly Hinge Design

- Easy to open, low effort, self closing mechanism
- Minimized hardware profile unobstructs and maximizes product views
- Tight, no gap fit minimizes infiltration
- Improved reliability reduces maintenance costs

### Widths:

38" (DPP-GP-038-58-M)

48" (DPP-GP-048-58-M)



### Features.

- LED canopy and shelf lights
- Tray support shelving system
- Wire racks supplied for each shelf
- Adjustable lighted shelving - adjustable in 1" increments
- Price tag molding (PTM) on each shelf
- McCue bumper - 1" and 3"
- Tempered glass self closing front doors with adjustable torsion spring hinge
- Tempered glass top for additional ambient lighting
- View ends for maximum product visibility
- Lower pull out drawers
- Cubby area below doors with adjustable dividers
- Plug and cord

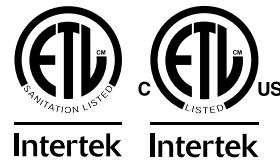
### Options.

- Available lengths - 38" and 48"
- Metal construction
- Shelf configurations of (3) or (4) levels
- Package ledge options available including solid surface
- Insect deterrent fan

### Electric Specifications:

Width	Volts	Phase	Hertz	Amps
38"	120	1	60	0.88
48"	120	1	60	0.88
No Front	120	1	60	0.84

This case is ETL certified to safety (UL-65) and sanitation (NSF-2) standards.



\* Some optional features may be certified by UL, NSF, and/or other 3rd party certification agencies. Contact Hussmann for verification or requests for such certification.

NOTE: These merchandisers are designed for use in stores when temperature and humidity do not exceed 75°F and 55% R.H. We reserve the right to change or revise specifications and product design in connection with any feature of our products. Such changes do not entitle the buyer to corresponding changes, improvements, additions, or replacements for equipment previously sold or shipped.

For additional resources, contact your representative or visit [www.hussmann.com](http://www.hussmann.com).

**HUSSMANN®**

### Hussmann Corporation

13770 Ramona Avenue  
Chino, California 91710-5423  
800.385.9229

[www.hussmann.com](http://www.hussmann.com)