

Self-Service Protector 2-Tier

FINISH:

- Clear Anodized Aluminum
 - Powder Coat:
 - Black
 - Silver
- RAL# _____

GLASS (Clear Tempered):

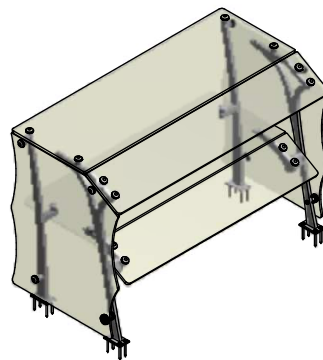
- 3/8" Front - Std
- 3/8" Top - Std
- 1/2" Top
- Frosted

- 1/2" Front

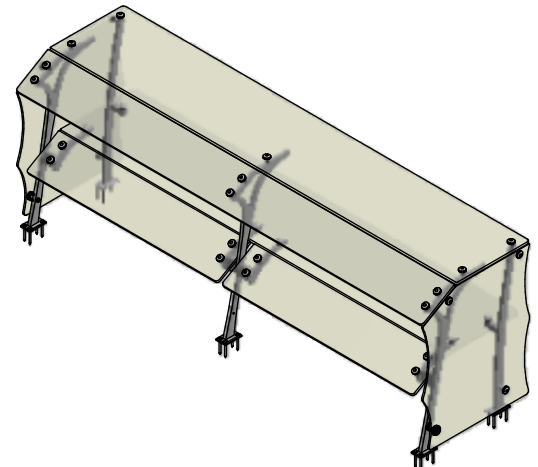
(*) Not all options available on all models. Contact Factory for specific information. For Mounting Options, see Mounting Specification Sheet

LENGTHS:

- 2 = 35-1/4" O.A. - 1 Section
- 3 = 49" O.A. - 1 Section
- 4 = 62-3/4" O.A. - 1 Section**
- 5 = 76-1/2" O.A. - 2 Sections
- 6 = 90-1/4" O.A. - 2 Sections
- Custom = _____ O.A.



PROTECTORS WITH LIGHTS AND/OR WARMERS REQUIRE (2) END PANELS

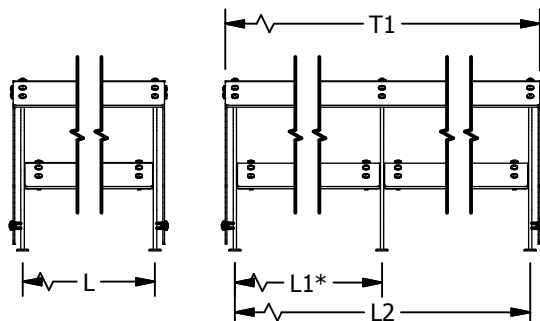


NSF/ANSI 2 - 2010 Standards Requirements:

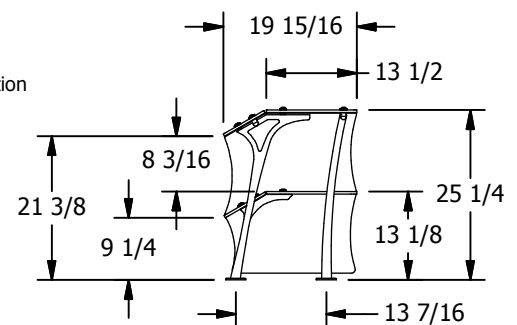
This language is copied with permission of NSF International

- 5.35.12 Food Shields for use on cafeteria counters**
- 5.35.12.1** The sum of a shield's protected horizontal plane (X) and its protected vertical plane (Y) shall be greater than or equal to 32 inches. When (X) = 0, (Y) shall be a minimum of 60 inches from finished floor
- 5.35.12.2** Maximum distance from the bottom edge of the front vertical glass and counter top shall be 1.5 inches
- 5.35.12.3** Maximum distance between the vertical glass and horizontal glass is 3/4 inch
- 5.35.12.4** Minimum horizontal distance between the front inside edge of displayed food and the bottom leading edge of the shield is 1.5 inches
- 5.35.6** A vertical barrier (end shield) shall be provided at each end of a foodshield. The vertical barrier shall be a minimum of 18 inches deep (front to back) beginning at the bottom leading edge of the foodshield. The minimum height of the vertical barrier shall be equal to the overall height of the foodshield. The maximum distance from the bottom edge of the vertical barrier and counter top shall be 1.5 inches.
- 5.35.6.1** A foodshield intended to be installed a maximum of 3" (76mm) from a building wall perpendicular to the foodshield is exempt from the requirements of 5.35.6 provided that the height of the building wall is not lower than the overall height of the foodshield.
- 5.35.9 Multiple tier food shields**
- 5.35.9.1** A self service foodshield over the bottom tier shall conform to 5.35.7
- 5.35.9.2** All tiers above the bottom tier shall have a permanent attached label restricting use to wrapped or packaged serving portions.

(2) End Panels per unit unless otherwise specified. End panels are 1/4" clear tempered glass unless otherwise specified.

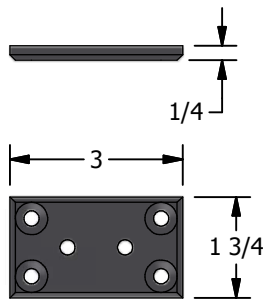


- Centerline Dimensions -
- L / L1 - 60" Max (3/8" Glass)
- 66" Max (1/2" Glass)
- T1 - 96" Max in Single Section

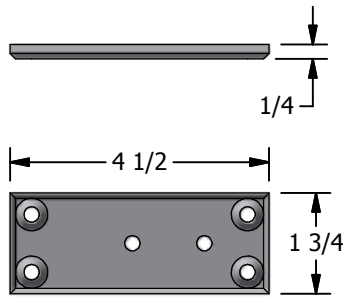


- (* - Middle support is centered unless L1 dimension is specified)
- (** - 1/2" Clear Tempered Glass Top Panel)

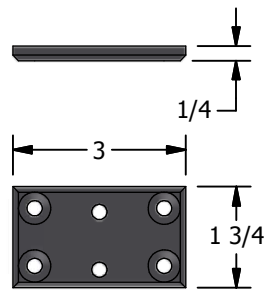
MOUNTING HARDWARE SPECIFICATIONS



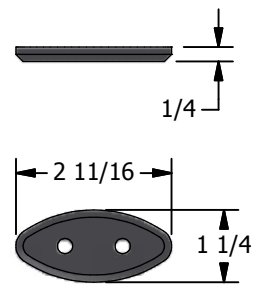
FL6.1
SURFACE-MOUNT



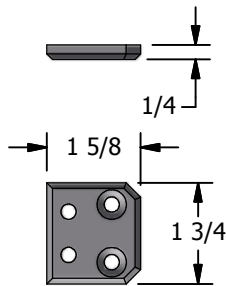
FL6.5
SURFACE-MOUNT
FOR VGG1.3 ONLY



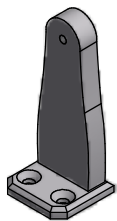
FL6.2
SURFACE-MOUNT



FL6.3
CONCEALED-MOUNT

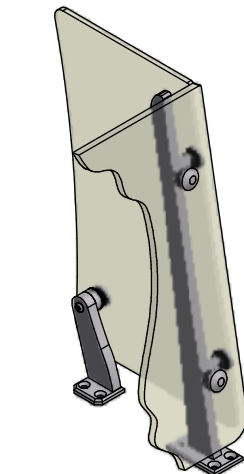
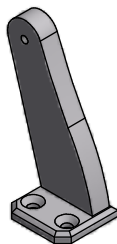


FL6.4
END PANEL
SUPPORT FLANGE

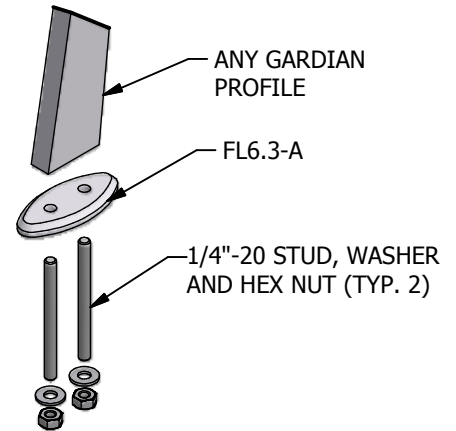


END PANEL SUPPORT
FOR VGG7-DS ONLY

END PANEL SUPPORT
FOR ALL OTHER MODELS



TYPICAL END PANEL
SUPPORT CONFIGURATION



**DETAIL VIEW OF
CONCEALED MOUNT ASSEMBLY**