



REFRIGERATED

Drop-In Cold Food Wells

w/ 1" Pan Rails

Models:

E-CP1-1

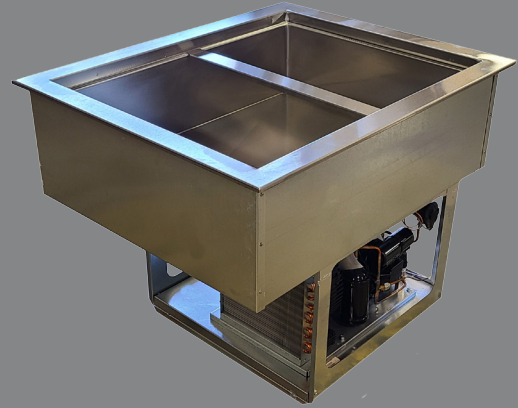
E-CP1-2

E-CP1-3

E-CP1-4

E-CP1-5

E-CP1-6



STANDARD FEATURES

- Self contained drop-in design
- Features 1" deep pan rails
- Hold standard 12" by 20" food pans and fractional sized pans
- Meets NSF Standard 7
- Stainless steel top and liner for maximum strength and durability
- 1" drains for ease of cleaning
- On-off switch with 8 ft. cord & plug for ease of installation and operation
- Type 134A or 404A CFC free refrigerant
- Fully insulated, CFC free, foamed-in place insulation keeps food cold while saving energy

DESCRIPTION

In Cold Pans hold pre-chilled food products at cold, fresh and safe serving temperatures All models are completely self-contained in one to six-pan models with individual thermostatic controls, are CFC free and include an 8 ft. 120V cord and plug.

SPECIFICATIONS

Exterior – One-piece top flange and covered-corner interiors constructed of 18 gauge stainless steel. Exterior body constructed of heavy gauge, corrosion resistant steel. Condensing unit mounted on corrosion resistant frame below the cold pan.

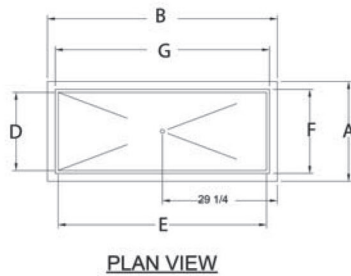
Interior – CFC free foamed-in-place insulation through-out, 1" drain located in the center for easy cleaning, and recessed ledge for pan support.

Refrigeration – Type 134A or 404A CFC free refrigerant system featuring wrapped coil construction on both sides and bottom, individual thermostats, on/off switch, 8 ft. cord and plug set NEMA 5-15P. Refrigeration system features sight glass, easy service valves, dryer/filter and receiver.

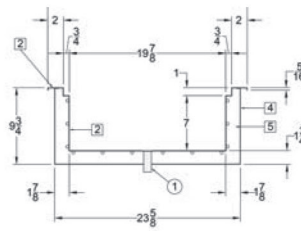
Drop-In Cold Food Wells

☐ E-CP1-1 ☐ E-CP1-2 ☐ E-CP1-3 ☐ E-CP1-4 ☐ E-CP1-5 ☐ E-CP1-6

Model E-CP1-4 shown below



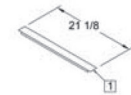
PLAN VIEW



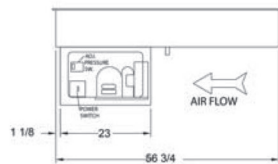
SECTION VIEW
SCALE: 1"=1"

Note: Specifications are subject to change without notice and are not intended for installation purposes. See installation instructions prior to installing the unit.

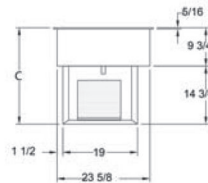
INCHES
MM



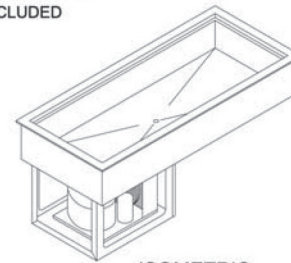
ADAPTER BAR
(3) INCLUDED



FRONT VIEW
OPERATOR SIDE



SIDE VIEW



ISOMETRIC

SPECIFICATIONS

Model Number	OVERALL DIMENSIONS		INTERIOR DIMENSIONS		CUT OUT DIMENSIONS		
	A Front to Back Inches (MM)	B Left to Right Inches (MM)	C Height Inches (MM)	D Front to Back Inches (MM)	E Left to Right Inches (MM)	F Front to Back Inches (MM)	G Left to Right Inches (MM)
E-CP1-1	25-3/8 (645)	17-3/8 (441)	24.5 (622)	19-7/8 (505)	11-7/8 (301)	23-7/8 (606)	15-7/8 (403)
E-CP1-2	25-3/8 (645)	31 (787)	24.5 (622)	19-7/8 (505)	25-1/2 (648)	23-7/8 (606)	29-1/2 (749)
E-CP1-3	25-3/8 (645)	44-3/4 (1137)	24.5 (622)	19-7/8 (505)	39-1/4 (997)	23-7/8 (606)	43-1/4 (1099)
E-CP1-4	25-3/8 (645)	58-1/2 (1486)	24.5 (622)	19-7/8 (505)	53 (1346)	23-7/8 (606)	57 (1448)
E-CP1-5	25-3/8 (645)	72-1/4 (1847)	24.5 (622)	19-7/8 (505)	66-3/4 (1695)	23-7/8 (606)	70-3/4 (1797)
E-CP1-6	25-3/8 (645)	86 (2184)	24.5 (622)	19-7/8 (505)	80-1/2 (2045)	23-7/8 (606)	84-1/2 (2146)

SHIPPING INFORMATION

Model Number	WEIGHTS		CARTON DIMENSIONS			CRATE SIZE	
	SHIPPING WEIGHTS POUNDS (KG)	SHIPPING WEIGHTS POUNDS (KG)	WIDTH INCHES (MM)	DEPTH INCHES (MM)	HEIGHT INCHES (MM)	CUBIC FEET	CUBIC METERS
E-CP1-1	89 (40)	84 (38)	19 (482)	27 (686)	32 (813)	9.5	0.27
E-CP1-2	182 (83)	176 (80)	27 (686)	32 (813)	32 (813)	16.0	0.46
E-CP1-3	194 (88)	187 (85)	27 (686)	46 (1168)	32 (813)	23.0	0.65
E-CP1-4	258 (117)	250 (113)	27 (686)	60 (1524)	32 (813)	30.0	0.85
E-CP1-5	278 (126)	269 (122)	27 (686)	73 (1854)	32 (813)	36.5	1.04
E-CP1-6	290 (154)	280 (109)	27 (686)	87 (2210)	32 (813)	43.5	1.23

POWER SUPPLY

Model Number	VOLTS	HP	AMPS	PHASE	POWER SUPPLY	REFRIGERANT
E-CP1-1	115	1/4	5.5	SINGLE	NEMA 5-15P	134A
E-CP1-2	115	1/4	5.5	SINGLE	NEMA 5-15P	134A
E-CP1-3	115	1/4	5.5	SINGLE	NEMA 5-15P	134A
E-CP1-4	115	1/3	6.5	SINGLE	NEMA 5-15P	404A
E-CP1-5	115	1/2	6.4	SINGLE	NEMA 5-20P	404A
E-CP1-6	115	1/2	6.4	SINGLE	NEMA 5-20P	404A