

Specification Sheet

Short Form Specifications

BlendPort[®] Soiled Dishtables, model _____.
 Top to be 16/304 stainless steel with all seams welded, ground smooth, and polished. Front and end to have 3"-high upturn with a 1½"-diameter rolled edge. Stainless channels welded to underside, with welded stainless leg gussets. Backsplash is 10"-high with holes for an 8" OC splash-mount faucet. 20¾" opening for dishwasher. 20" x 20" x 5" deep stainless steel prerinse sink with basket drain. Legs to be 1½" O.D. stainless tubing with 1" diameter crossbracing and adjustable stainless bullet feet.



left-hand model shown

Item No.:	_____
Project No.:	_____
S.I.S. No.:	_____

Soiled Dishtables

MODELS:

- | | |
|---|---|
| <input type="checkbox"/> BPSDT-36L-16/3 | <input type="checkbox"/> BPSDT-36R-16/3 |
| <input type="checkbox"/> BPSDT-48L-16/3 | <input type="checkbox"/> BPSDT-48R-16/3 |
| <input type="checkbox"/> BPSDT-60L-16/3 | <input type="checkbox"/> BPSDT-60R-16/3 |
| <input type="checkbox"/> BPSDT-72L-16/3 | <input type="checkbox"/> BPSDT-72R-16/3 |
| <input type="checkbox"/> BPSDT-84L-16/3 | <input type="checkbox"/> BPSDT-84R-16/3 |
| <input type="checkbox"/> BPSDT-96L-16/3 | <input type="checkbox"/> BPSDT-96R-16/3 |

Design and Construction Features

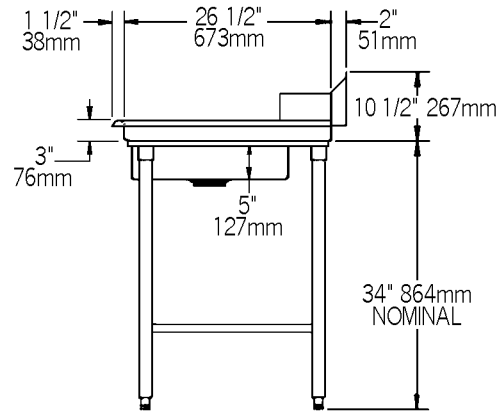
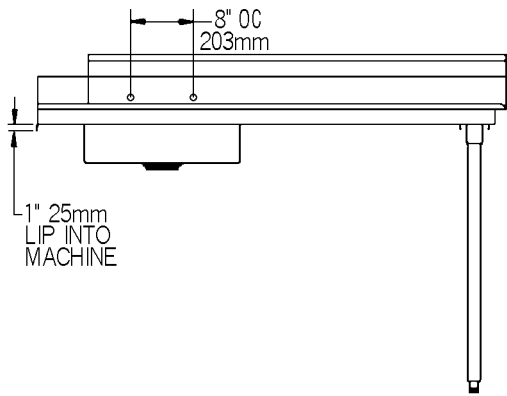
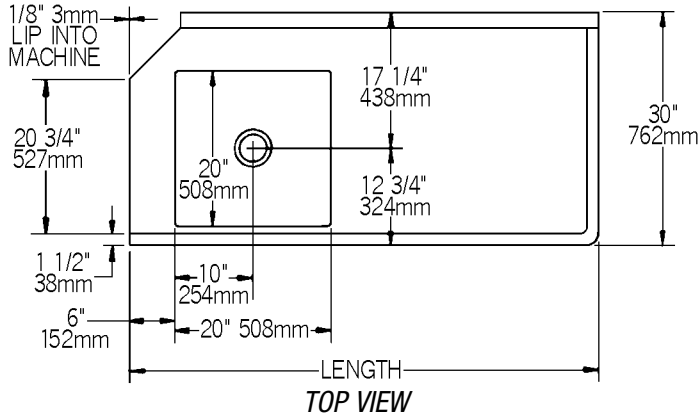
- 16 gauge type 304 stainless steel.
- 30" (762mm)-wide table with choice of six lengths.
- Left or right hand operation.
- 20" x 20" x 5" (508 x 508 x 127mm) prerinse sink punched for standard basket drain.
- Holes supplied for splash-mount faucet.
- Adjustable stainless feet with up to 1" (25mm) adjustment.
- 1½" (41mm)-diameter stainless legs with welded 1" (25mm)-diameter crossbrace.





Item No.: _____
 Project No.: _____
 S.I.S. No.: _____

Soiled Dishtables



FRONT VIEW

SIDE VIEW

(right-hand model shown)

LEFT-HAND model #	RIGHT-HAND model #	length		weight	
		in.	mm	lbs.	kg
BPSDT-36L-16/3	BPSDT-36R-16/3	36"	914	52	23.6
BPSDT-48L-16/3	BPSDT-48R-16/3	48"	1219	62	28.1
BPSDT-60L-16/3	BPSDT-60R-16/3	60"	1524	72	32.7
BPSDT-72L-16/3	BPSDT-72R-16/3	72"	1829	87	39.5
BPSDT-84L-16/3	BPSDT-84R-16/3	84"	2134	96	43.6
BPSDT-96L-16/3	BPSDT-96R-16/3	96"	2438	106	48.1



An Eagle Group Company
 100 Industrial Boulevard, Clayton, DE 19938-8903 USA
 Phone: 800-441-8440 • Fax: 302-653-2065

Printed in U.S.A.
 ©2023 by Eagle Group
 Rev. 03/23

Although every attempt has been made to ensure the accuracy of the information provided, we cannot be held responsible for typographical or printing errors. Information and specifications are subject to change without notice. Please confirm at time of order.