

Refrigeration Equipment 1-Glass Door ADA Height Under Counter Refrigerator 24" Long

ITEM # _____

MODEL # _____

NAME # _____

SIS # _____

AIA # _____



738325 (KCHUCGD23R)

1-Glass Door ADA Height Under Counter Refrigerator 24" Long

Short Form Specification

Item No. _____

1-glass door ADA compliant undercounter refrigerator with exterior back panel and exterior bottom panel in galvanized steel, exterior side and top panel in 430 stainless steel; interior back, top and bottom panels in high impact white polystyrene. Fin & tube condenser to improve the performances in high temperature environments. Automatic Defrost Cooling System and temperature control. Vinyl heavy duty adjustable, easy to handle and clean shelves. External temperature display.

R600a gas in refrigeration circuit.
ETL Safety and Sanitation certified.
3/5 Years warranty.

Main Features

- ADA Height Compliant
- External temperature display.
- Removable gasket for easy cleaning operations.
- Fin & Tube Condenser improves performance in high temperature environments.
- Automatic Defrost Cooling System provides worry-free performance.
- Electronic Temperature Control, quick and simple to set, with control display for easy monitoring.
- Cabinet completely insulated with high density polyurethane for low environmental impact.
- Heavy duty Vinyl coated steel shelves.

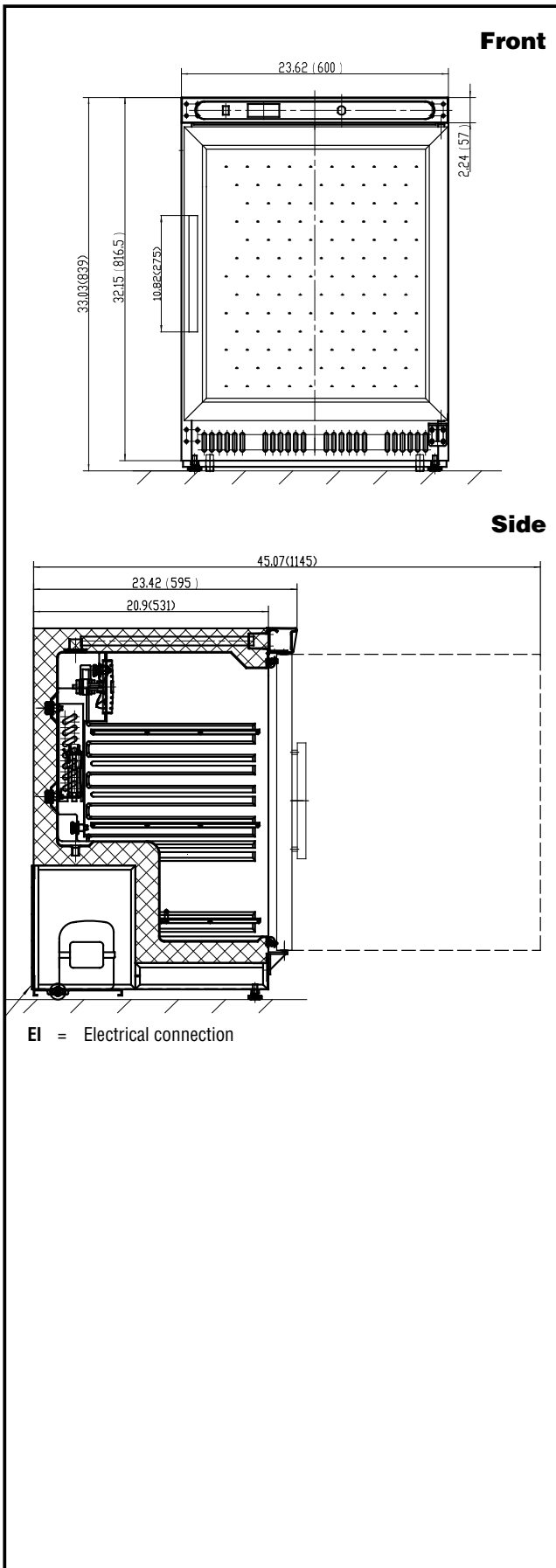
Construction

- Lockable door.
- Magnetic gasket removable without tools for easy cleaning.
- Pre-wired heavy duty power cord.
- Heavy duty door hinges.

Sustainability

- CFC and HCFC free (ecological refrigerant type: R600a).

APPROVAL: _____



Electric

Supply voltage:	738325 (KCHUCGD23R)	115 V/1 ph/60 Hz
Electrical power, max:		0.24 kW
Plug type:		NEMA 5-15

Capacity:

Gross capacity:	4.4 cu. feet
-----------------	--------------

Key Information:

Door hinges:	Right Side
External dimensions, Width:	23 9/16" (599 mm)
External dimensions, Depth:	23 3/8" (594 mm)
External dimensions, Height:	33 " (838.2 mm)
Internal Dimensions (depth):	15 15/16" / (405 mm)
Internal Dimensions (height):	24 5/8" / (625 mm)
Internal Dimensions (width):	19 5/16" / (491 mm)
Shipping height:	41 5/16" (1050 mm)
Shipping weight:	115 lbs (52 kg)
Shipping volume:	16.39 ft ³ (0.46 m ³)
Type of external material:	Stainless Steel
Type of internal material:	High Impact White Polystyrene
Warranty:	3 / 5 years
Approvals	;ETL C&US;ETL SANITATION

Refrigeration Data

Compressor power:	1/12 hp
Operating temperature min.:	32 °F
Operating temperature max.:	41 °F
Condenser type:	Fin & tube
Defrost type:	Automatic

Sustainability

Current consumption:	2 Amps
Refrigerant type:	R600a
Refrigerant weight:	64 g

