

Cuisine Series Heavy Duty Front-Fired Hot Top Range

Project _____
 Item _____
 Quantity _____
 CSI Section 11400
 Approved _____
 Date _____

Models

- C36-10R • C36-10S
- C36-10C • C36-10M



Model C36-10R
 Range with Two
 18" Front-Fired
 Hot Tops

Standard Features

- Two 37,500 BTU per 18" (457mm) front-fired hot tops
- Stainless steel front and sides
- Stainless steel front rail
- Stainless steel burner box
- 1-1/4" NPT front gas manifold
- Can be installed individually or in a battery
- 7" (178mm) high stainless steel stub back
- 6" (152mm) stainless steel adj. legs
- Porcelain oven interior
- R model - 4 rack positions
 C model - 3 rack positions
- R model - 1 chrome plated rack
 C model - 3 chrome plated racks
- Fully insulated oven interior
- Safety oven pilot
- Oven thermostat control: 150°-500°F (66°- 260°C) (R/C)
- Range base convection oven (C) c/w NEMA 5-15P cord & plug, 1/3 hp motor, 120V 60Hz, 0.6A
- Modular unit (M) can be mounted on Polar Cuisine refrigerated base

Options & Accessories

- Stainless steel oven interior in lieu of porcelain oven interior - NC
- Single or double deck high shelf or back riser
- Full-height stand for modular base with legs or casters
- Stainless steel intermediate shelf for cabinet base
- Stainless steel door(s) for cabinet base units
- Stainless steel back
- Continuous plate rail, 48-72" for battery installations
- Gas shut-off valves: 3/4", 1", 1 1/4" NPT (Specify)
- Gas regulator: 3/4", 1", 1 1/4" NPT (Specify)
- Gas flex hose w/ quick disconnect: 3/4", 1", 1 1/4" NPT (Specify)
- Rear gas connection: 3/4"
- Set of (4) flanged feet (for fastening unit to the floor)
- Set of (4) 5" polyurethane non-marking swivel casters w/front brakes
- Set of (4) 6" swivel casters, w/front brakes
- Extra oven rack
- Extension for 1/9 pans

Specifications

U.S. Range Cuisine 36" (914mm) wide Heavy Duty Range Series. Model _____ with total BTU/h rating of _____ when used with natural/propane gas. Stainless steel front and sides. 6" (152mm) legs with adjustable feet.

Ovens - One piece oven door. Stainless steel oven interior with a heavy-duty, "keep-cool" door handle. Standard oven comes with a thermostat with a temperature range from 150° (low) to 500°F (66°- 260°C). One chrome plated oven rack for standard ovens and three for convection ovens.

Front-Fired Hot Tops - 18" (457mm) Section. 12,500 BTU/h each burner with three per section.

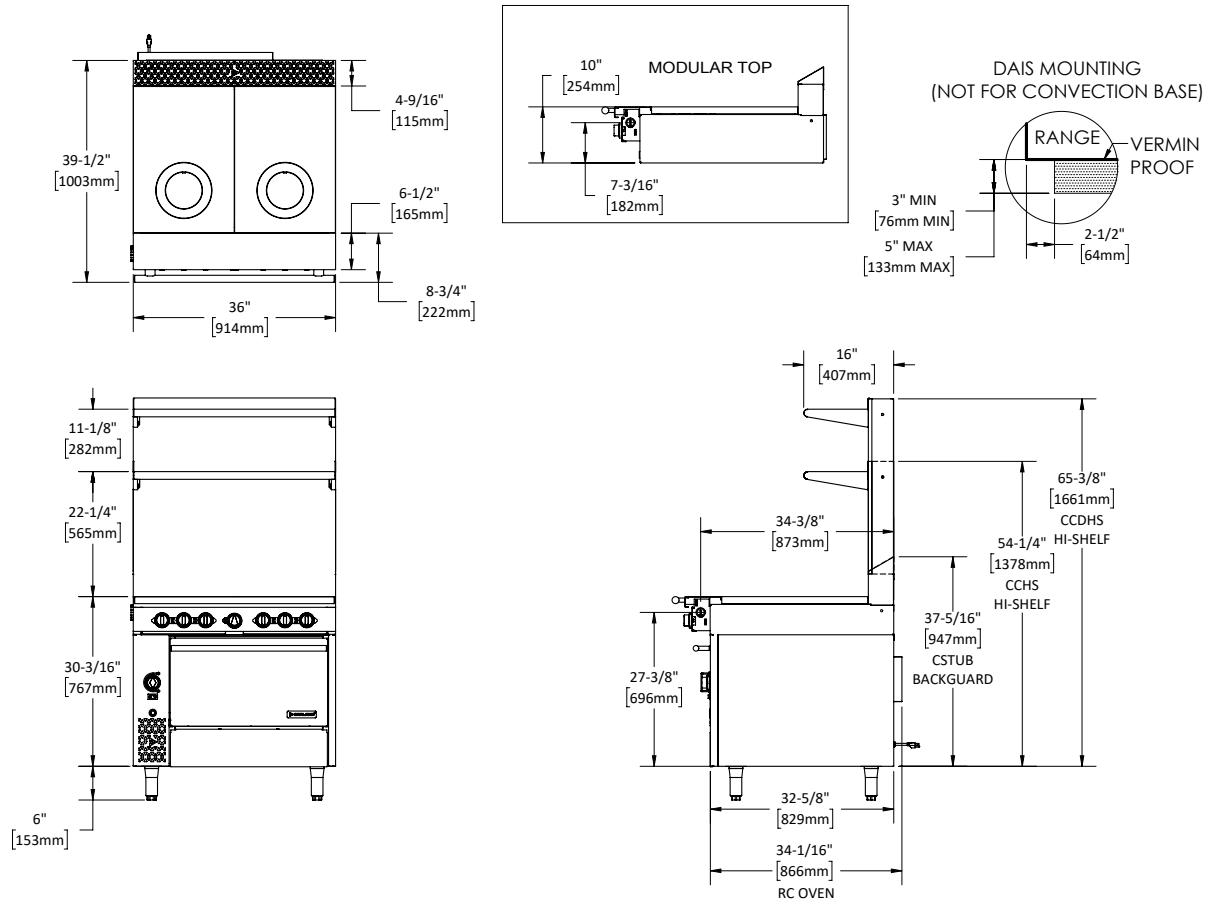
NOTE: Range-based convection oven models can be located in the middle of a battery, banked back-to-back with other equipment, and can be positioned against a wall

NOTE: Ranges supplied with casters must be installed with an approved restraining device.



Cuisine Series Heavy Duty Front-Fired Hot Top Range

Cuisine Series Heavy Duty Front-Fired Hot Top Range



Model #	Description	Total BTU/h (NAT. Gas)	Total BTU/h Propane	Shipping		Individual Burner Ratings (BTU/HR)			
				Cu Ft	lbs/kg	Burner	NAT.	PRO.	
C36-10R	Two (2) - 18" (457mm) FFHT - Standard Oven	115,000	110,000	53	600/272	18" Front-Fired Hot Top	12,500 (3 per 18" section)		
C36-10C*	Two (2) - 18" (457mm) FFHT - Convection Oven	112,000	110,000	53	600/272	Standard Oven	40,000	35,000	
C36-10S	Two (2) - 18" (457mm) FFHT - Storage Base	75,000	75,000	53	414/188	Convection Oven	37,000	35,000	
C36-10M	Two (2) - 18" (457mm) FFHT - Modular Top	75,000	75,000	30	329/149	Interior Dimensions: In (mm)			
						Product	Height	Width	Depth
						Standard Oven	13-1/2 (343)	26-1/4 (667)	29 (737)
						Convection Oven	13-1/2 (343)	26-1/4 (667)	25 (635)
						Cabinet Base	20-1/2 (521)	32-1/4 (819)	31 (787)
						Gas Pressure	NAT.	PRO.	
						Minimum Supply	7" WC	11" WC	
						Manifold Operating Pressure	6" WC	10" WC	
						Gas Manifold 1-1/4" NPT			

FFHT = Front-Fired Hot Top
 Add Suffix for (C) Convection Oven Base* 1/3 hp motor 120V 60Hz 0.6 Amps c/w Nema 5-15P cord & plug

Combustible Wall Clearance	
Sides	Back
10" (254mm)	6" (152mm)

Garland reserves the right to make changes to the design or specifications without prior notice.

Garland Commercial Ranges Ltd.
 1177 Kamato Road,
 Mississauga, Ontario
 L4W 1X4 CANADA

General Inquires 1-905-624-0260
 USA Sales, Parts and Service 1-800-424-2411
 Canadian Sales 1-888-442-7526
 Canada or USA Parts/Service 1-800-427-6668

www.garland-group.com
 7885
 01/24

