



Profit from the Eagle Advantage®

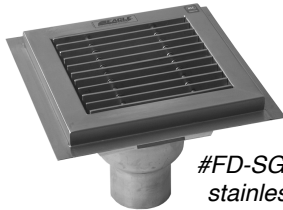
Specification Sheet

Short Form Specifications

Eagle Floor Trough with stainless steel grating, model _____. Unit constructed of 14/304 stainless steel all-welded construction. Drain pan has built-in pitch towards drain, accommodates up to a 4"-diameter pipe, and comes standard with a stainless steel removable perforated basket. Type 304 stainless steel subway style grating shall be 3/8" x 1" vertically positioned bars spaced 1" apart for ease of drainage. Two 5/8" stainless steel rods, set 2 1/4" in from each edge, are welded to the bars to eliminate swaying.



model #FT-1248-SG
floor trough with stainless steel grating



#FD-SG floor drain with stainless steel grating

Options / Accessories

- Gray color fiberglass grating
- ADA-compliant grating (for Floor Troughs)

EAGLE GROUP

100 Industrial Boulevard, Clayton, DE 19938-8903 USA
 Phone: 302-653-3000 • 800-441-8440 • Fax: 302-653-2065
www.eaglegrp.com
www.eaglegrpnews.com
www.eaglemhc.com

For custom configuration or fabrication needs, contact our **SpecFAB® Division**.
 Phone: 302-653-3000 • Fax: 302-653-2065 • e-mail: quotes@eaglegrp.com

Item No.: _____
 Project No.: _____
 S.I.S. No.: _____

Floor Troughs and Floor Drains with Stainless Steel Grating

MODELS:

- | | | | |
|--|---|---|---|
| <input type="checkbox"/> FD-SG | <input type="checkbox"/> FT-1210-SG | <input type="checkbox"/> FT-1824-SG | <input type="checkbox"/> FT-2430-SG |
| <input type="checkbox"/> FT-1218-SG | <input type="checkbox"/> FT-1524-SG | <input type="checkbox"/> FT-1830-SG | <input type="checkbox"/> FT-2436-SG |
| <input type="checkbox"/> FT-1224-SG | <input type="checkbox"/> FT-1530-SG | <input type="checkbox"/> FT-1836-SG | <input type="checkbox"/> FT-2448-SG |
| <input type="checkbox"/> FT-1230-SG | <input type="checkbox"/> FT-1536-SG | <input type="checkbox"/> FT-1848-SG | <input type="checkbox"/> FT-2460-SG |
| <input type="checkbox"/> FT-1236-SG | <input type="checkbox"/> FT-1548-SG | <input type="checkbox"/> FT-1860-SG | <input type="checkbox"/> FT-2472-SG |
| <input type="checkbox"/> FT-1248-SG | <input type="checkbox"/> FT-1560-SG | <input type="checkbox"/> FT-1872-SG | <input type="checkbox"/> FT-2484-SG |
| <input type="checkbox"/> FT-1260-SG | <input type="checkbox"/> FT-1572-SG | <input type="checkbox"/> FT-1884-SG | <input type="checkbox"/> FT-2496-SG |
| <input type="checkbox"/> FT-1272-SG | <input type="checkbox"/> FT-1584-SG | <input type="checkbox"/> FT-1896-SG | <input type="checkbox"/> FT-24120-SG |
| <input type="checkbox"/> FT-1284-SG | <input type="checkbox"/> FT-1596-SG | <input type="checkbox"/> FT-18120-SG | |
| <input type="checkbox"/> FT-1296-SG | <input type="checkbox"/> FT-15120-SG | <input type="checkbox"/> FT-2424-SG | |

Floor Troughs

- 14 gauge type 304 stainless steel all-welded construction.
- Built-in pitch towards drain insures complete drainage.
- Stainless steel drain accommodates up to a 4" (102mm) diameter pipe, and features a removable perforated stainless steel basket.
- Comes with subway-style stainless steel grating.
- Optional ADA-compliant Grating* available. To order, add suffix **"-ADA"** to model number of trough with fiberglass or stainless steel grating. Example: FT-1224-SG-**ADA**
- Custom sizes available.

Floor Drains

- 14 gauge type 304 stainless steel construction.
- Highly polished covered corners.
- Perforated drain can be inverted to double as a bee hive strainer.
- Drain accommodates up to a 4" (102mm)-diameter waste pipe.
- Comes with subway-style stainless steel grating.

* For Floor Troughs with Stainless Steel Grating, optional ADA-compliant Grating features additional stainless steel flat bars spaced 1/4" apart. ADA-compliant Grating is available in gray only.

Certifications / Approvals



AutoQuotes



EG25.00B Rev. 05/23

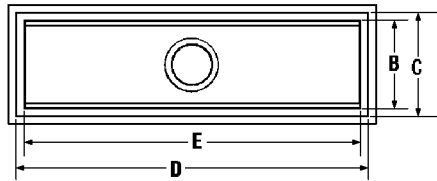
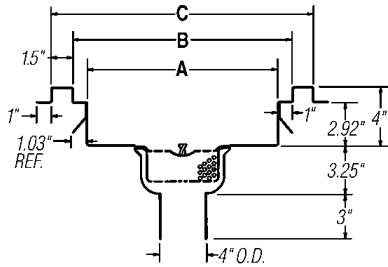
Spec sheets available for viewing, printing or downloading from our online literature library at our websites



Profit from the Eagle Advantage®

Item No.: _____
 Project No.: _____
 S.I.S. No.: _____

Floor Troughs with Stainless Steel Grating



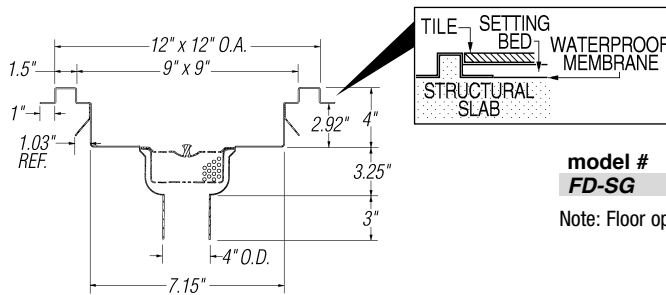
(see chart below for dimensions A through E)

GRATING USED IN VARIOUS FLOOR TROUGHS

Floor Trough (dimension D)	Floor Trough (dimension E)	Grating Used - Quantity and Length
18" (457mm)	15" (381mm)	one 15" (381mm)
24" (610mm)	21" (533mm)	one 12" (305mm) and one 9" (229mm)
30" (762mm)	27" (686mm)	three 9" (229mm)
36" (914mm)	33" (838mm)	two 12" (305mm) and one 9" (229mm)
48" (1219mm)	45" (1143mm)	three 12" (305mm) and one 9" (229mm)
60" (1524mm)	57" (1448mm)	four 12" (305mm) and one 9" (229mm)
72" (1829mm)	69" (1753mm)	five 12" (305mm) and one 9" (229mm)
84" (2134mm)	81" (2057mm)	six 12" (305mm) and one 9" (229mm)
96" (2438mm)	93" (2362mm)	seven 12" (305mm) and one 9" (229mm)
120" (3048mm)	117" (2972mm)	nine 12" (305mm) and one 9" (229mm)

12" (305mm)-WIDE TROUGHS			15" (381mm)-WIDE TROUGHS			18" (457mm)-WIDE TROUGHS			24" (610mm)-WIDE TROUGHS			dimension D		dimension E	
dimension A: 7" (178mm)			dimension A: 10" (254mm)			dimension A: 13" (330mm)			dimension A: 19" (483mm)			in.		in.	
dimension B: 9" (229mm)			dimension B: 12" (305mm)			dimension B: 15" (381mm)			dimension B: 21" (533mm)			mm		mm	
dimension C: 12" (305mm)			dimension C: 15" (381mm)			dimension C: 18" (457mm)			dimension C: 24" (610mm)						
weight			weight			weight			weight						
lbs.	kg	model #	lbs.	kg	model #	lbs.	kg	model #	lbs.	kg	model #				
100	45.4	FT-1218-SG	n/a	n/a		n/a	n/a		n/a	n/a		18"	457	15"	381
105	47.6	FT-1224-SG	115	52.2	FT-1524-SG	125	56.7	FT-1824-SG	150	68.0	FT-2424-SG	24"	610	21"	533
107	48.5	FT-1230-SG	117	53.1	FT-1530-SG	127	57.6	FT-1830-SG	152	69.0	FT-2430-SG	30"	762	27"	686
110	49.9	FT-1236-SG	120	54.4	FT-1536-SG	130	59.0	FT-1836-SG	155	70.3	FT-2436-SG	36"	914	33"	838
115	52.2	FT-1248-SG	125	56.7	FT-1548-SG	135	61.2	FT-1848-SG	160	72.6	FT-2448-SG	48"	1219	45"	1143
120	54.4	FT-1260-SG	130	59.0	FT-1560-SG	140	63.5	FT-1860-SG	165	74.8	FT-2460-SG	60"	1524	57"	1448
220	99.8	FT-1272-SG	230	104.3	FT-1572-SG	240	108.9	FT-1872-SG	265	120.2	FT-2472-SG	72"	1829	69"	1753
225	102.1	FT-1284-SG	235	106.6	FT-1584-SG	245	111.1	FT-1884-SG	270	122.5	FT-2484-SG	84"	2134	81"	2057
230	104.3	FT-1296-SG	240	108.9	FT-1596-SG	250	113.4	FT-1896-SG	275	124.7	FT-2496-SG	96"	2438	93"	2362
240	108.9	FT-12120-SG	250	113.4	FT-15120-SG	260	117.9	FT-18120-SG	285	129.3	FT-24120-SG	120"	3048	117"	2972

Floor Drains with Stainless Steel Grating



model #	description	width		length	
		in.	mm	in.	mm
FD-SG	with stainless steel grating	12"	305	12"	305

Note: Floor opening = 11 1/2" x 11 1/2" (292 x 292)

EAGLE GROUP

100 Industrial Boulevard, Clayton, DE 19938-8903 USA

Phone: 302-653-3000 or 800-441-8440 • Fax: 302-653-2065

www.eaglegrp.com • www.eaglegrpnews.com • www.eaglehmc.com

Printed in U.S.A.

©2023 by Eagle Group

Rev. 05/23

Spec sheets available for viewing, printing or downloading from our online literature library at our websites

Although every attempt has been made to ensure the accuracy of the information provided, we cannot be held responsible for typographical or printing errors. Information and specifications are subject to change without notice. Please confirm at time of order.