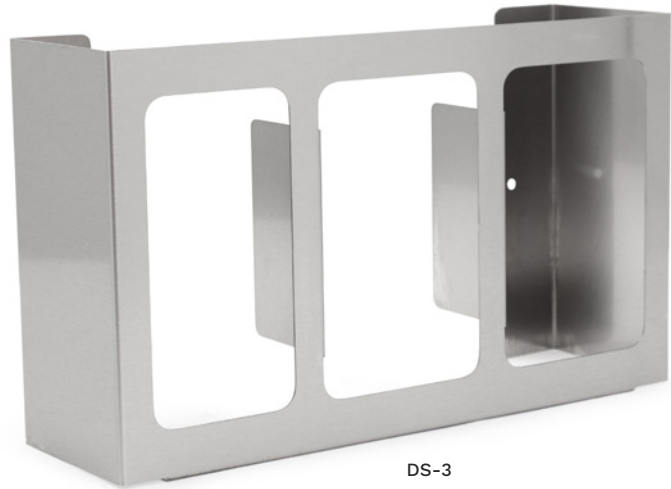


"DS" GLOVE DISPENSERS

18GA S.S. Construction

FEATURES:

- 18GA Type 300 Stainless Steel, #4 Polish, Satin Finish
- Mounts Securely To Wall Vertically Or Horizontally Holds Most Standard Sized Boxes Of Tissues, Masks Or Gloves
- Available In 1,2,3 Or 4 Compartments
- Easy To Clean And Mount
- Note: Gloves Not Included



DS-3



DS-1



DS-2



DS-4

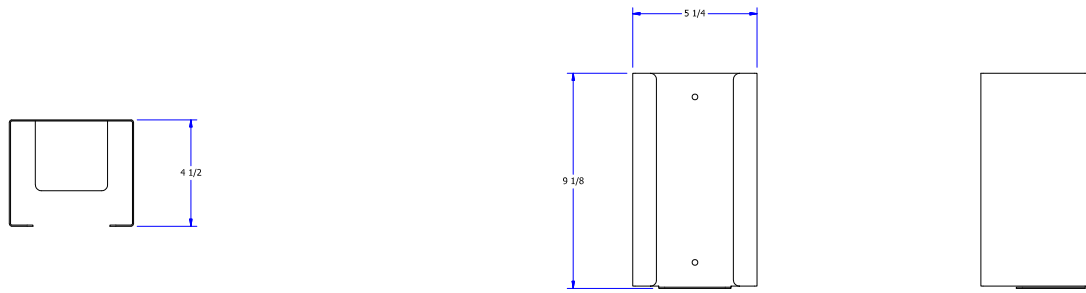
"DS" GLOVE DISPENSERS

MODEL	SIZE (LXWXH)	WEIGHT (LBS)
DS-1	5-1/4"x4-1/2"x9-1/8"	2
DS-2	10-1/8"x4-1/2"x9-1/8"	3
DS-3	15-1/8"x4-1/2"x9-1/8"	3
DS-4	20-1/8"x4-1/2"x9-1/8"	4

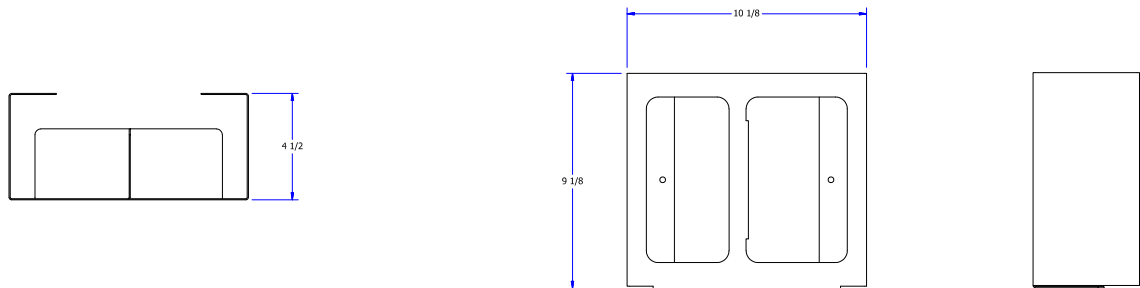
ALL DIMENSIONS ARE TYPICAL. TOLERANCE +/- .500". JOHN BOOS & CO. RESERVES THE RIGHT TO CHANGE SPECIFICATIONS WITHOUT NOTICE.

DETAILED SPECIFICATIONS

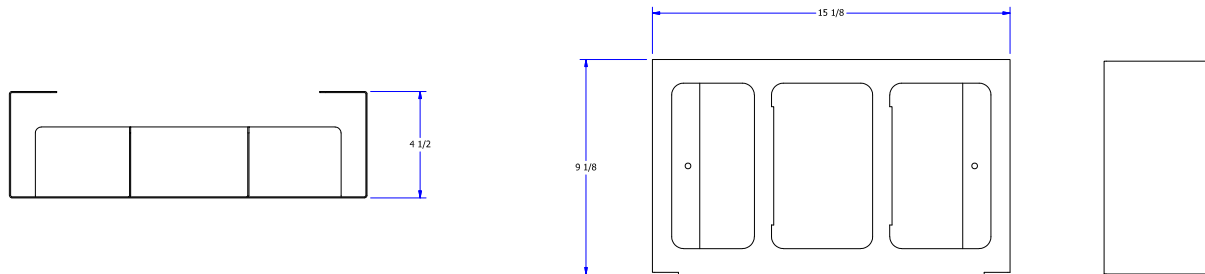
DS-1



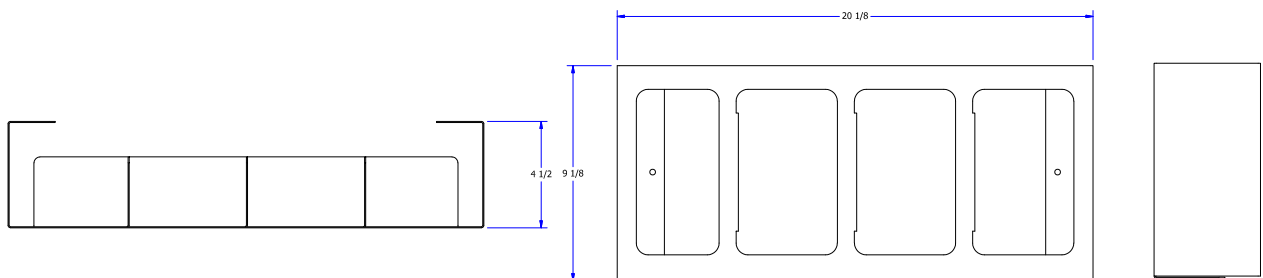
DS-2



DS-3



DS-4



"DS" GLOVE DISPENSERS

MODEL	SIZE (LXWXH)	WEIGHT (LBS)
DS-1	5-1/4"x4-1/2"x9-1/8"	2
DS-2	10-1/8"x4-1/2"x9-1/8"	3
DS-3	15-1/8"x4-1/2"x9-1/8"	3
DS-4	20-1/8"x4-1/2"x9-1/8"	4

ALL DIMENSIONS ARE TYPICAL. TOLERANCE +/- .500". JOHN BOOS & CO. RESERVES THE RIGHT TO CHANGE SPECIFICATIONS WITHOUT NOTICE.