

Champion[®]

The Dishwashing Machine Specialists

PROJECT: _____

ITEM # _____ QTY: _____

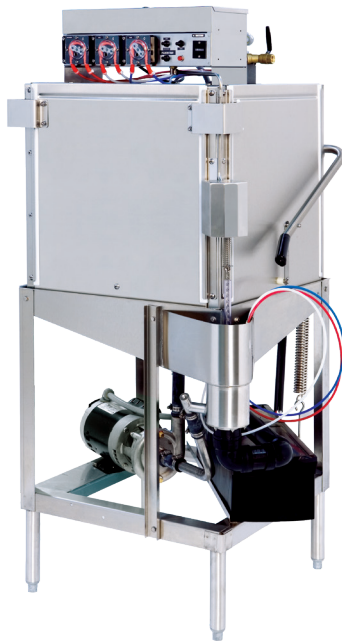
MODEL # _____

AIA # _____ SIS # _____

DL2000

LOW TEMPERATURE DOOR MACHINE

LOW TEMPERATURE DOOR MACHINE



Rendered image is for general visual representation only. Please refer to specifications for the latest detailed product information.

STANDARD FEATURES

- **40 Racks / 160 Covers Per Hour**
- **20-1/2" Tall Door Opening**
- **Convertible Corner**
to straight and straight to corner
- **Economical To Operate**
uses only 1.01 Us gallons (.84 Imp/3.8l) of water per cycle
- **Quick 90 Second Cycle Time**
- **All Stainless Steel Construction**
- **Unique Spray Arm System**
features upper and lower stainless steel wash arms with reinforced end caps
- **Top Mounted Controls**
include built-in chemical pumps and deliming system for dealing with scale
- **Auto Start/Stop Makes Operation Safe And Easy**
- **New Integrated Scrap Tray**
prevents food soil from entering drain system
- **Airgap Fill System**
- **115 Volt Unit – 20 Amp Breaker Required**
- **Made in America**



SPECIFIER STATEMENT

Specified unit will be Champion DL2000 low temperature, chemical sanitizing commercial dishwashers meet ETL, UL, and CUL sanitation and construction standards WITHOUT the use of BOOSTER or TANK HEATERS. The model is constructed entirely of stainless steel. Each unit automatically washes, rinses and sanitizes utensils in standard 19-3/4" x 19-3/4" racks. Units come with standard upper and lower stainless steel wash arms.

In the USA:

3765 Champion Blvd, Winston-Salem, NC 27105
Tel: (336) 661-1556 Fax: (336) 661-1979
www.championindustries.com

In Canada:

2674 N. Service Rd., Jordan Station, Ontario, Canada LOR1S0
Tel: (905) 562-4195 Fax: (905) 562-4618
www.championindustries.com/1canada

SPECIFICATIONS

Capacities

Racks per hr. (NSF rated)	40
Pump Capacity	52 Gal/197 LPM

Motor Horsepower

1 HP

Water Consumption

Gal. per hr. (max. use)	40.4
[liters/imp gal.]	[152.9/33.6]
Gal. per rack	1.01
[liters/imp gal.]	[3.8/0.84]

Temperature °F/°C

Required	120/49
Recommended	140/60

Time Cycle in seconds

Wash	45
Rinse	30
Dwell	15
Total cycle	90

Utilities

Water

1/2" water inlet

Electrical

115V; 16 amps draw 20 amp breaker required

Drain

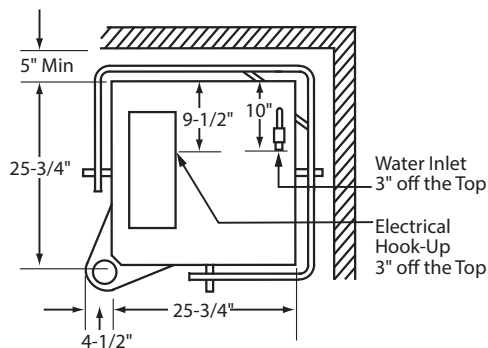
2" I.P.S.
10.58 Drain Max Flow Rate (g/min)

Warning: Plumbing, electrical connections should be made by qualified personnel who will observe all the applicable plumbing, sanitary and safety codes and the National Electrical Code.

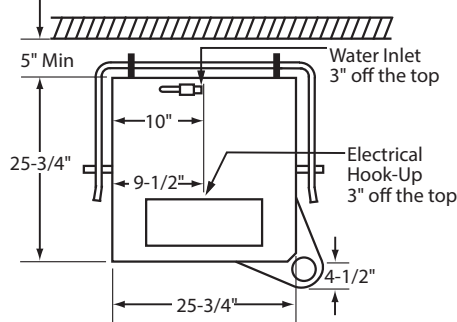
OPTIONS & ACCESSORIES

- Sanitizer Alarm
- Vent Fan Control
- Champion ION scale prevention system

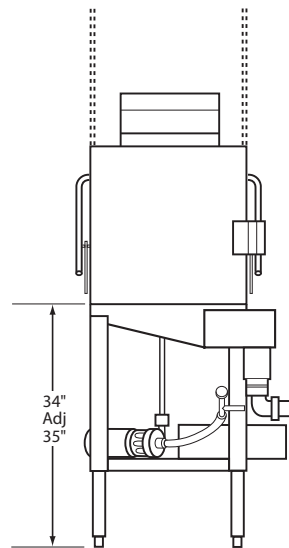
Top View - Corner



Top View - Straight



Front View



Right View

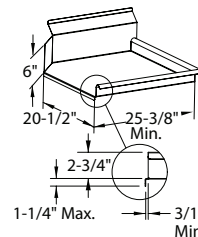
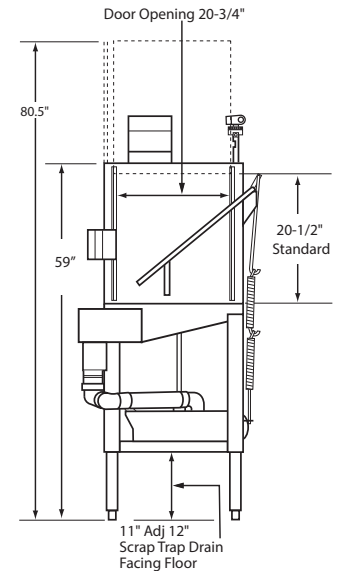


Table Construction

In the USA: 3765 Champion Blvd, Winston-Salem, NC 27105 | Tel: (336) 661-1556 Fax: (336) 661-1979 | www.championindustries.com

In Canada: 2674 N. Service Rd., Jordan Station, Ontario, Canada LOR1S0 | Tel: (905) 562-4195 Fax: (905) 562-4618 | www.championindustries.com/1canada