

# "PRW" POT RACKS - WALL MOUNT

*Single - Stainless Steel Construction w/Stainless Steel Hooks*

**FEATURES:**

- Type 300 Stainless Steel
- Hooks (See Table For Quantity Per Size)

**SPECIFICATIONS:**

- 3/16"x2" Stainless Steel Flat Bar Construction

**CERTIFICATIONS:**



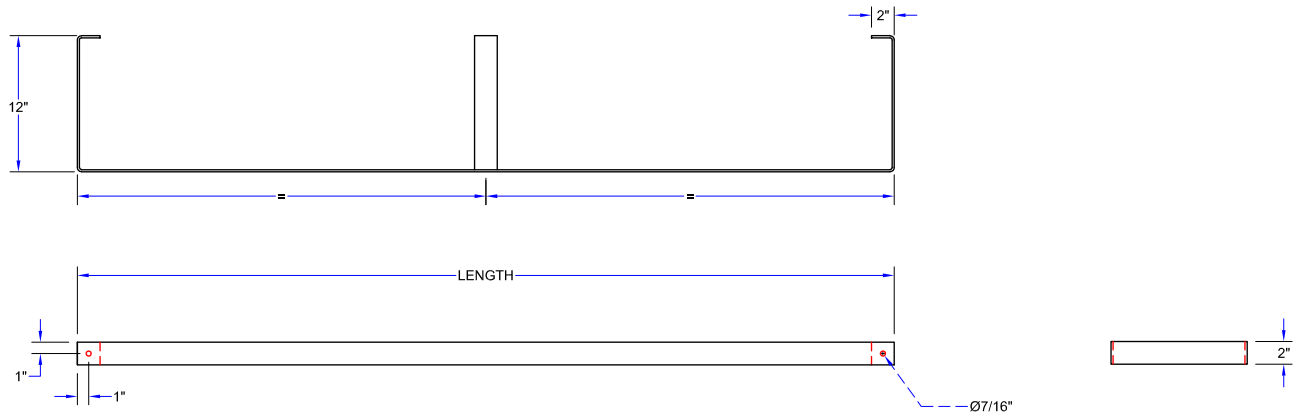
PRW11

## "PRW" POT RACK

MODEL	LENGTH	# OF HOOKS	WT. (LBS)
PRW11A	36"	3	7
PRW11	48"	4	9
PRW12	60"	5	10
PRW13	72"	6	13
PRW13A	84"	7	14
PRW14	96"	8	16
PRW14A	108"	9	17
PRW15	120"	10	18
PRW16	132"	11	20
PRW17	144"	12	21

ALL DIMENSIONS ARE TYPICAL. TOLERANCE +/- .500". JOHN BOOS & CO. RESERVES THE RIGHT TO CHANGE SPECIFICATIONS WITHOUT NOTICE.

# DETAILED SPECIFICATIONS



## "PRW" POT RACK

SINGLE	LENGTH	# OF HOOKS	WT. (LBS)
PRW11A	36"	3	7
PRW11	48"	4	9
PRW12	60"	5	10
PRW13	72"	6	13
PRW13A	84"	7	14
PRW14	96"	8	16
PRW14A	108"	9	17
PRW15	120"	10	18
PRW16	132"	11	20
PRW17	144"	12	21

ALL DIMENSIONS ARE TYPICAL. TOLERANCE +/- .500". JOHN BOOS & CO. RESERVES THE RIGHT TO CHANGE SPECIFICATIONS WITHOUT NOTICE.