

"TCH" STORAGE CABINET

w/4 Adjustable Stainless Steel Shelves

FEATURES:

- 18GA Stainless Steel
- Type 400 Series Stainless Steel
- 4 Adjustable Stainless Steel Shelves
- Sloped Top
- Adjustable Bullet Feet
- Mounting Holes In Back Panel To Securely Fasten To Wall

SPECIFICATIONS:

- Stainless Steel Cabinets Are TIG Welded, Exposed Welds Are Polished To Match Adjacent Surface #4 Polish, Satin Finish
- Body: 18GA Type 400 Series Stainless Steel
- Shelves: 18GA Type 400 Series Stainless Steel

CERTIFICATIONS:



TCH-223684

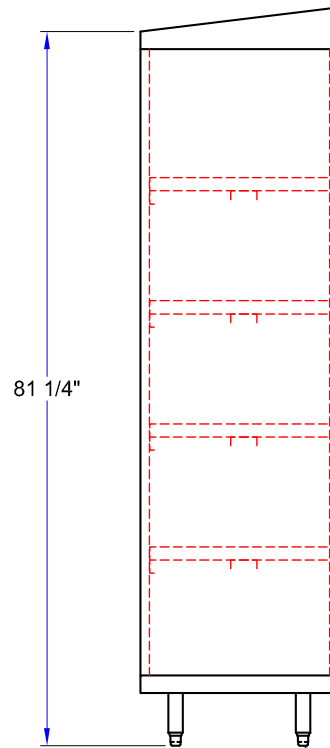
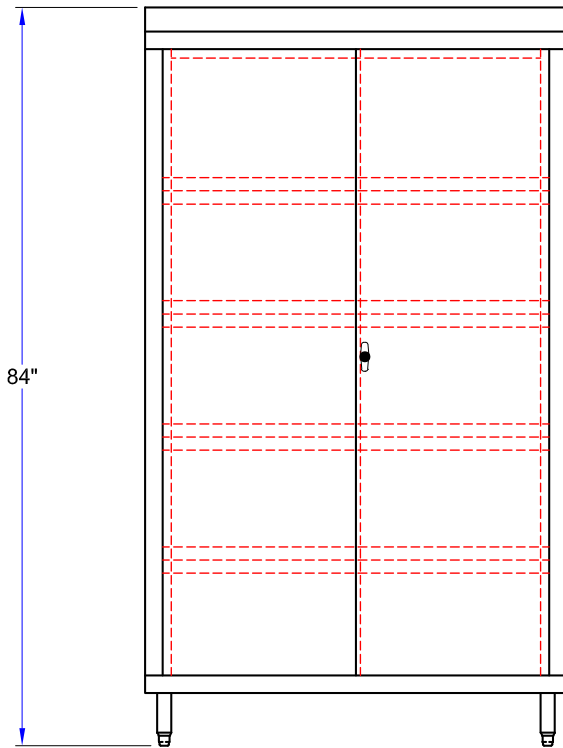
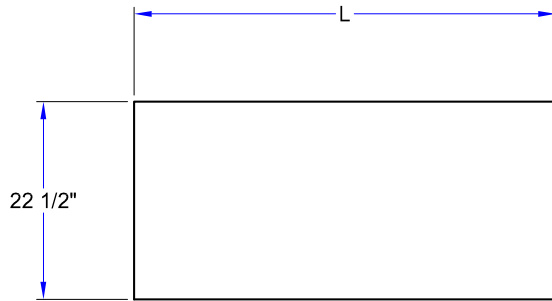


"TCH" STORAGE CABINET

MODEL	OVSIZE (L X W X H)	WEIGHT (LBS)
TCH-223684	36"x22-1/2"x84"	270
TCH-224884	48"x22-1/2"x84"	337

ALL DIMENSIONS ARE TYPICAL. TOLERANCE +/- .500". JOHN BOOS & CO. RESERVES THE RIGHT TO CHANGE SPECIFICATIONS WITHOUT NOTICE.

DETAILED SPECIFICATIONS



ADJ SS BULLET

"TCH" STORAGE CABINET

MODEL	OVSIZE (L X W X H)	WEIGHT (LBS)
TCH-223684	36"x22-1/2"x84"	270
TCH-224884	48"x22-1/2"x84"	337

ALL DIMENSIONS ARE TYPICAL. TOLERANCE +/- .500". JOHN BOOS & CO. RESERVES THE RIGHT TO CHANGE SPECIFICATIONS WITHOUT NOTICE.