



southbend

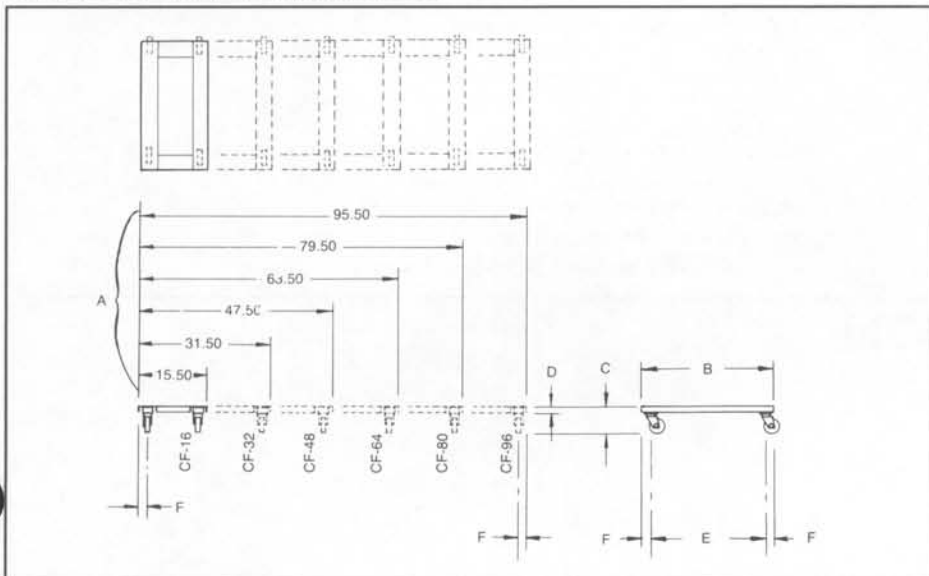
JOB _____ ITEM # _____

A MIDDLEBY COMPANY

SECTIONAL OPTIONS/ACCESSORIES

Caster Frames, Table Top Leg Frames, Rear Gas Connection Quick Disconnect & Hoses, Pressure Regulator & Shutoff Valve, Casters

CASTER FRAMES



() = Millimeters

MODEL	Width A	Depth B	Height C	D	E	F	Crated Weight
<input type="checkbox"/> CF-16	15.5" (394)	32.5" (826)	6.5" (165)	1.5" (38)	28.5" (724)	2" (51)	45 lbs. 20.4 kg.
<input type="checkbox"/> CF-32	31.5" (800)	32.5" (826)	6.5" (165)	1.5" (38)	28.5" (724)	2" (51)	70 lbs. 31.8 kg.
<input type="checkbox"/> CF-48	47.5" (1207)	32.5" (826)	6.5" (165)	1.5" (38)	28.5" (724)	2" (51)	90 lbs. 40.8 kg.
<input type="checkbox"/> CF-64	63.5" (1613)	32.5" (826)	6.5" (165)	1.5" (38)	28.5" (724)	2" (51)	100 lbs. 45.4 kg.
<input type="checkbox"/> CF-80	79.5" (2019)	32.5" (826)	6.5" (165)	1.5" (38)	28.5" (724)	2" (51)	110 lbs. 50 kg.
<input type="checkbox"/> CF-96	95.5" (2426)	32.5" (826)	6.5" (165)	1.5" (38)	28.5" (724)	2" (51)	140 lbs. 63.5 kg.

NOTE: Caster frames increase cooking top height to 36½" (with standard 4" diameter caster).
Shipped strapped to skids.

Standard Finish: Stainless steel front.

OPTIONS:

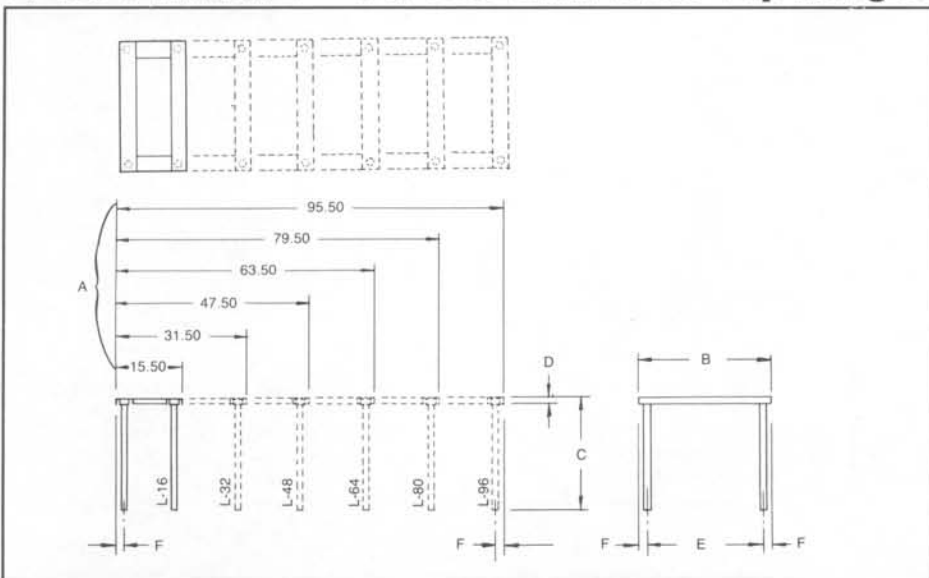
- Stainless steel left side
- Stainless steel right side
- Stainless steel rear
- Casters



Available in special widths up to 96".

CASTER FRAMES NOT RECOMMENDED FOR USE ON CONVECTION BASE RANGES.

LEG FRAME — For Use With Table Top Ranges



() = Millimeters

MODEL	Width A	Depth B	Height C	D	E	F	Crated Weight
<input type="checkbox"/> L-16	15.5" (394)	32.5" (826)	27.75" (705)	1.5" (38)	28.5" (724)	2" (51)	45 lbs. 20.4 kg.
<input type="checkbox"/> L-32	31.5" (800)	32.5" (826)	27.75" (705)	1.5" (38)	28.5" (724)	2" (51)	70 lbs. 31.8 kg.
<input type="checkbox"/> L-48	47.5" (1207)	32.5" (826)	27.75" (705)	1.5" (38)	28.5" (724)	2" (51)	90 lbs. 40.8 kg.
<input type="checkbox"/> L-64	63.5" (1613)	32.5" (826)	27.75" (705)	1.5" (38)	28.5" (724)	2" (51)	100 lbs. 45.5 kg.
<input type="checkbox"/> L-80	79.5" (2019)	32.5" (826)	27.75" (705)	1.5" (38)	28.5" (724)	2" (51)	110 lbs. 50 kg.
<input type="checkbox"/> L-96	95.5" (2426)	32.5" (826)	27.75" (705)	1.5" (38)	28.5" (724)	2" (51)	140 lbs. 63.5 kg.

NOTE: Cooking top of Table Top Range is 36".
Black frame standard with black legs.
Stainless frame standard with chrome legs.
Shipped strapped to skids.

Standard Finish: Stainless steel front.

OPTIONS:

- Stainless steel left side
- Stainless steel right side
- Stainless steel rear
- Stainless steel legs
- Casters



Available in special widths up to 96".

MISCELLANEOUS INFORMATION:

Check local codes for fire and safety regulations.
Casters are used with flex hose, a restraining device should be used to eliminate undue strain on flex hose.

Southbend, in line with its policy to continually improve its products, reserves the right to change materials or specifications without notice.

WARRANTY: One year Parts and Labor Warranty at no extra charge from the date of purchase.

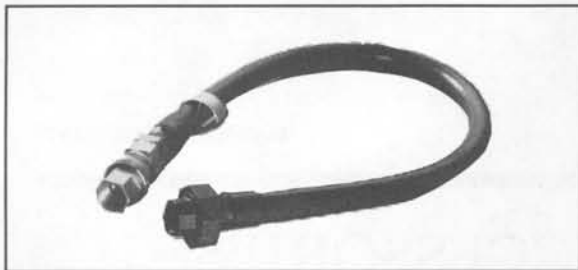
We reserve the right to change specifications and product design without notice. Such revisions do not entitle the buyer to corresponding changes, improvements, additions or replacements for previously purchased equipment.

INTENDED FOR COMMERCIAL USE ONLY. NOT FOR HOUSEHOLD USE.

1100 Old Honeycutt Road
Fuquay-Varina, NC 27526
(919) 552 9161
FAX (919) 552 9798
(800) 348 2558

Page SR-23

QUICK DISCONNECT & HOSES



- 1" Quick Disconnect with 36" Flex Hose Pt. #1130196
- 1" Quick Disconnect with 48" Flex Hose Pt. #1130195
- 1" Quick Disconnect with 60" Flex Hose Pt. #1130194
- 1" Quick Disconnect Only Pt. #1130101
- 1" x 36" Flex Hose Only Pt. #1130112
- 1" x 48" Flex Hose Only Pt. #1130113
- 1" x 60" Flex Hose Only Pt. #1130114

NOTE: 1" Quick Disconnect Capacity — 240,000 BTU



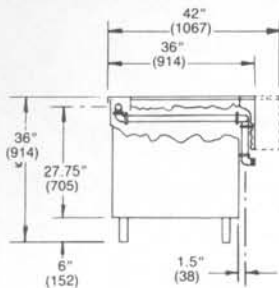
PRESSURE REGULATOR & SHUTOFF VALVE



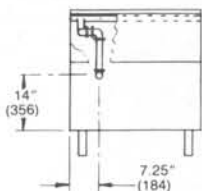
- 1 1/4" Gas Pressure Regulator (shipped loose)
Natural Gas — Preset @ 6". Maximum Capacity 2,500,000 BTU (Pt. #4450009)
- 1 1/4" Gas Pressure Regulator (shipped loose)
LP Gas — Preset @ 10". Maximum Capacity 2,500,000 BTU (Pt. #4450010)
- 1" Gas Pressure Regulator (shipped loose)
Natural Gas — Preset @ 6". Maximum Capacity 600,000 BTU (Pt. #1167782)
- 1" Gas Pressure Regulator (shipped loose)
LP Gas — Preset @ 10". Maximum Capacity 600,000 BTU (Pt. #1167783)
- 3/4" Gas Pressure Regulator (shipped loose)
Natural Gas — Preset @ 4". Maximum Capacity 250,000 BTU (Pt. #1160164)
- 3/4" Gas Pressure Regulator (shipped loose)
LP Gas — Preset @ 10". Maximum Capacity 250,000 BTU (Pt. #1160173)
- 1" Gas Shut Off Valve (shipped loose)
- 1 1/4" Gas Shut Off Valve (shipped loose) for Sectional Batteries



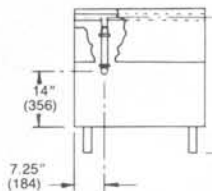
REAR GAS CONNECTION



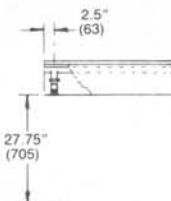
TYPICAL SIDE VIEW FOR ALL 36" & 42" SECTIONAL UNITS W/OVEN OR CABINET BASES AND HALF SECTIONS



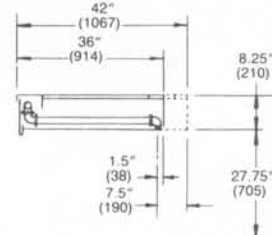
REAR VIEW TYPICAL GAS CONNECTION LOCATION 32" WIDE UNITS WITH OR WITHOUT C.O.



REAR VIEW FOR 32-B, 32-40 & 171-40 WITH OR WITHOUT C.O.



REAR VIEW FOR TABLE TOP UNITS 32" OR 16" WIDE UNITS



SIDE VIEW FOR 36" & 42" TABLE TOP UNITS

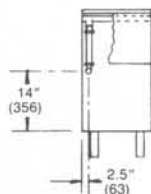
Scale 1/4" = 1 ft. () = Millimeters

A 1" pressure regulator will be supplied (packed loose) with each rear gas unit.

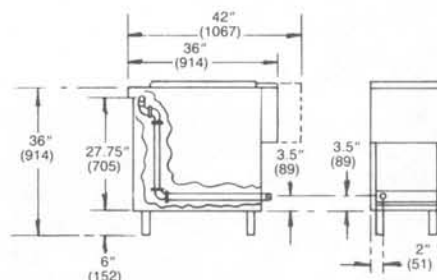
CASTERS



- Swivel — front with locks.



REAR VIEW TYPICAL GAS CONNECTION LOCATION HALF SECTIONS AND DRAIN CABINETS



SIDE VIEW FOR 14-36", 14-42", 18-36", 18-42" FRYERS

REAR VIEW FOR 14-36", 14-42", 18-36", 18-42" FRYERS

MISCELLANEOUS INFORMATION:

Check local codes for fire and safety regulations.
If casters are used with flex hose, a restraining device should be used to eliminate undue strain on flex hose.
Southbend, in line with its policy to continually improve its products, reserves the right to change materials or specifications without notice.

All Southbend Products are automatically covered by a ONE YEAR PARTS AND LABOR WARRANTY at no extra charge from the date of purchase.



A MIDDLEBY COMPANY