

Blueair by
BLUENIX

MODEL EW30XX

WORK TABLES

High polished
430 Series
stainless steel top.

16GA with 3 hat channels



STANDARD FEATURES



High polished 430 Series stainless steel top
Elegant and Durable.



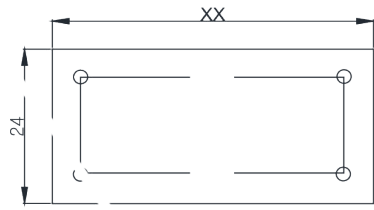
Adjustable under shelf
Enhanced Functionality.



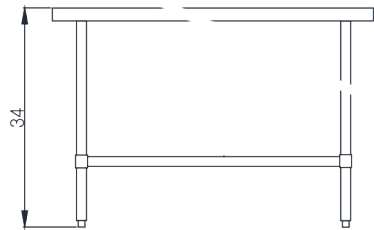
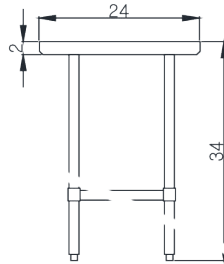
Galvanized steel Under shelf & legs with bullet feet
Built to Last with Sturdy Under Shelf & Legs, Featuring Bullet Feet.

MODEL EW24XX

Top view



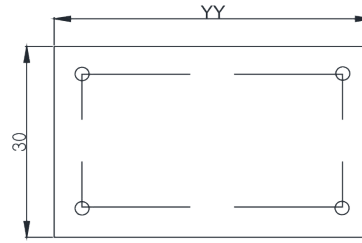
Side view



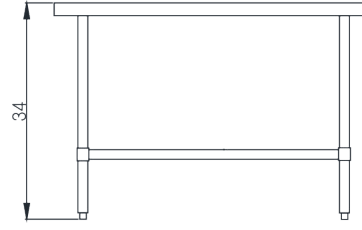
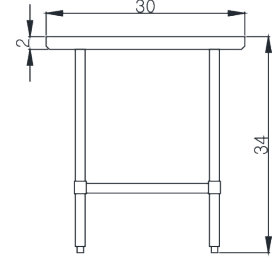
Front view

MODEL EW30YY

Top view



Side view



Front view

Model

**Cabinet Dimensions
(inches/mm)**

**Weight
(lbs/kg)**

Model	Cabinet Dimensions (inches/mm)			Weight (lbs/kg)	
	L	D	H	Net Weight	Ship Weight
EW2418	18" (457mm)	24" (610mm)	34" (864mm)	35(16)	38(17)
EW2424	24" (610mm)	24" (610mm)	34" (864mm)	40(18)	44(20)
EW2430	30" (762mm)	24" (610mm)	34" (864mm)	46(21)	50(23)
EW2436	36" (915mm)	24" (610mm)	34" (864mm)	51(23)	56(25)
EW2448	48" (1219mm)	24" (610mm)	34" (864mm)	62(28)	68(30)
EW2460	60" (1524mm)	24" (610mm)	34" (864mm)	73(33)	80(36)
EW2472	72" (1829mm)	24" (610mm)	34" (864mm)	82(37)	90(40)
EW2484	84" (2134mm)	24" (610mm)	34" (864mm)	91(41)	100(45)
EW2496	96" (2438mm)	24" (610mm)	34" (864mm)	104(47)	114(51)
EW3018	18" (457mm)	30" (762mm)	34" (864mm)	43(20)	47(22)
EW3024	24" (610mm)	30" (762mm)	34" (864mm)	48(22)	52(24)
EW3030	30" (762mm)	30" (762mm)	34" (864mm)	52(24)	57(26)
EW3036	36" (915mm)	30" (762mm)	34" (864mm)	60(27)	66(29)
EW3048	48" (1219mm)	30" (762mm)	34" (864mm)	69(31)	75(34)
EW3060	60" (1524mm)	30" (762mm)	34" (864mm)	81(37)	89(40)
EW3072	72" (1829mm)	30" (762mm)	34" (864mm)	92(42)	101(46)
EW3084	84" (2134mm)	30" (762mm)	34" (864mm)	101(46)	111(50)
EW3096	96" (2438mm)	30" (762mm)	34" (864mm)	115(52)	126(57)

Blueair by
BLUENIX

BLUE AIR has right to change specifications without further notice.



blueairfse.com



orders@blueairfse.com



223 W. Rosecrans Ave., CA 90248
T: 310-808-0102

9 W. Shelton Terrace #A, Hillside, NJ 07205
T: 470-625-0182

7025 Amwiler industrial Drive, Suite A, Atlanta GA
T: 908-688-0970