

Status

Royal Rideau™ dinnerware

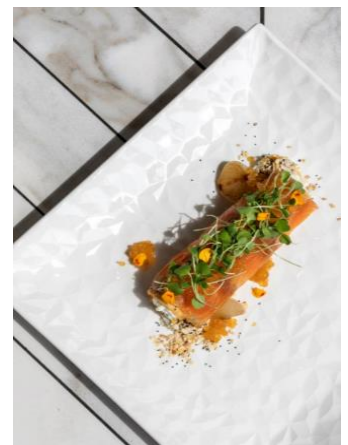
Syracuse®
CHINA

An aesthetically and tactilely intriguing faceted surface gives Syracuse® Status dinnerware a modern sophisticated vibe unlike any other, available in Libbey's premium Royal Rideau™ body color. A wide assortment of modern and traditional shapes provide a rich variety of presentations – extensive versatility ideal for hospitality venues looking to create a unified look throughout the property.

It comes in Libbey's premium Royal Rideau™ body color, for a sophisticated yet welcoming white shade along with exceptional durability that's backed with a lifetime no-chip warranty.

Features and Benefits:

- Ideal for adding new spice, variety and excitement to standard entrées
- Durable and beautiful Royal Rideau™ body color delivers an elegant premium aesthetic – with an inviting white that is bright without being stark
- Moderately priced to give every restaurant the chance to dress up their tabletop
- Highly Polished Foot: Achieves a greater degree of scratch resistance
- Fully vitrified: fired at temperature greater than 2300°F to achieve a stronger and harder material that minimizes absorption of moisture, odor and bacteria
- Backed by Libbey's lifetime no-chip warranty



Status

dinnerware

Syracuse[®]
CHINA



Coupe Plate

Item No. 988001 018
D6 $\frac{3}{8}$ "
H $\frac{7}{8}$ "
3 doz./26# • .90 cu. ft.
SCC 988001018



Coupe Platter

Item No. 988001 078
D13"
H1 $\frac{1}{8}$ "
1 doz./31# • 1.41 cu. ft.
SCC 988001078



Rim Plate

Item No. 988001 118
D6 $\frac{3}{8}$ "
H $\frac{7}{8}$ "
3 doz./26# • .99 cu. ft.
SCC 988001118



Square Plate

Item No. 988001 136
D8 $\frac{1}{2}$ "
H1 $\frac{1}{8}$ " L8 $\frac{1}{2}$ "
2 doz./28# • .66 cu. ft.
SCC 988001136



Rectangular Platter

Item No. 988001 236
13" x 8"
H1 $\frac{1}{8}$ " W8" L13"
1 doz./23# • .59 cu. ft.
SCC 988001236

Item No. 988001 036
D8 $\frac{1}{2}$ "
H $\frac{7}{8}$ "
2 doz./19# • .61 cu. ft.
SCC 988001036

Item No. 988001 139
D9"
H $\frac{5}{8}$ "
2 doz./21# • .62 cu. ft.
SCC 988001139

Item No. 988001 158
D10 $\frac{1}{8}$ "
H1 $\frac{1}{8}$ " L10 $\frac{1}{8}$ "
1 doz./21# • .67 cu. ft.
SCC 988001158



Item No. 988001 055
D11"
H1 $\frac{1}{8}$ "
1 doz./28# • .74 cu. ft.
SCC 988001055

Item No. 988001 151
D10 $\frac{1}{2}$ "
H $\frac{3}{4}$ "
1 doz./18# • .67 cu. ft.
SCC 988001151

Rectangular Platter

Item No. 988001 258
11" x 6"
H1 $\frac{1}{4}$ " W6" L11"
1 doz./22# • .55 cu. ft.
SCC 988001258



Saucer

Item No. 988001 500
D6"
H $\frac{3}{4}$ " D6" WL2"
3 doz./22# • .88 cu. ft.
SCC 988001500



Stacking Cup

Item No. 988001 531
10 oz.
H2 $\frac{3}{8}$ " D5 F 1 $\frac{1}{4}$ " T3 $\frac{3}{8}$ "
3 doz./18# • 1.05 cu. ft.
SCC 988001531



Mug

Item No. 988001 572
14 oz.
H3 $\frac{1}{2}$ " D5" F2 $\frac{3}{4}$ " T3"
3 doz./18# • 1.31 cu. ft.
SCC 988001572



Stacking Bouillon

Item No. 988001 705
11 oz.
H2 $\frac{1}{4}$ " D4" F1 $\frac{1}{4}$ " T3 $\frac{3}{8}$ "
3 doz./16# • .79 cu. ft.
SCC 988001705



Cereal Bowl

Item No. 988001 760
D6", 20 oz.
H2 $\frac{1}{8}$ " D6" F3 $\frac{1}{4}$ "
3 doz./24# • .80 cu. ft.
SCC 988001760



Deep Coupe Plate

Item No. 988001 774
D8"
H1 $\frac{1}{8}$ "
2 doz./21# • .83 cu. ft.
SCC 988001774

Item No. 988001 785
D11"
H1 $\frac{1}{4}$ "
1 doz./20# • 1.04 cu. ft.
SCC 988001785

For additional information, contact your Libbey's sales representative or distributor.

