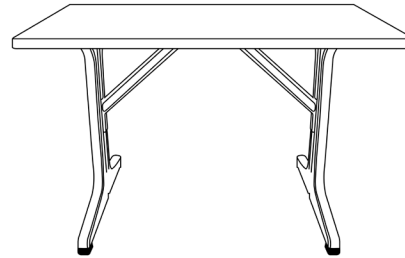




View Product

# Omega 45" x 28" Lateral Tables



Height: 28.8"  
 Width: 45"  
 Length: 28"  
 Unit Weight: 36.1 lbs

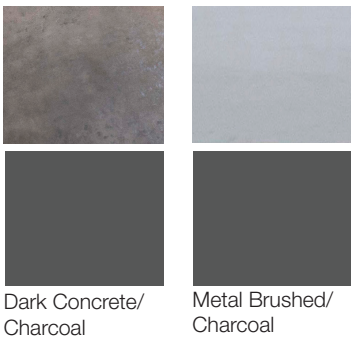
## Product Specifications

Product Description	Reference Number	Color	UPC Code 014306	Pack Weight Each (lbs.)	Master Pack	Master Pack Volume (cu. ft)
Omega 45" x 28" w/ charcoal base	US286744	Dark Concrete	932354	41.31	1	4.93
	US286746	Metal Brushed	932347	41.31	1	4.93

## Features & Benefits Warranty: 1 Yr.

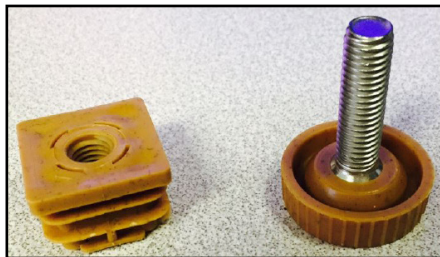
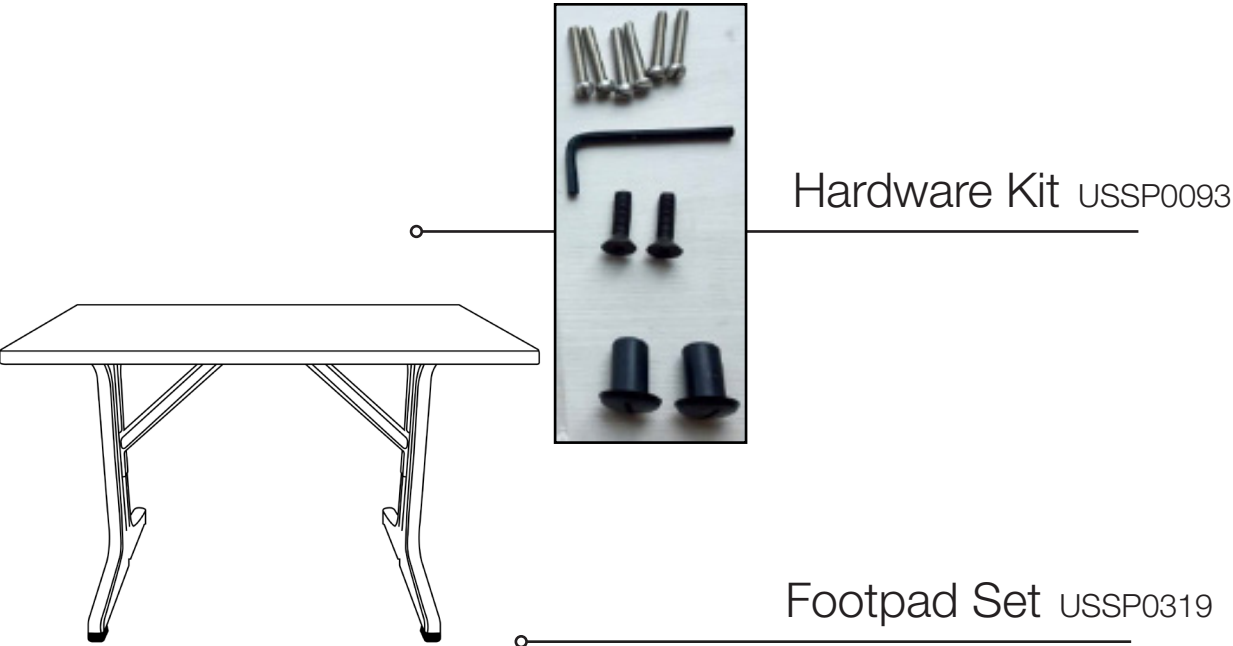
- Use both indoors and outdoors
- High resistance to scratches, UV rays, and cigarette burns
- Economical and easy to clean

Omega complete tables combine our ever-popular and easy-to-assemble resin alpha base with a new tabletop that has been specially designed with a coordinating resin edge. The tabletops provide extraordinary resistance to scratching, abrasion and impacts.



# Omega 45"x 28" Lateral Tables

Spare Parts



Reference	Description
USSP0093	HARDWARE KIT ALPHA LATERAL & OMEGA
USSP0319	ALPHA SM/LG FOOTPAD SET BLACK (3 FIXED/1 ADJ)