

Grocerant

Inline Refrigerated Self-Service Case

Structural Concepts®

DELIVERING FRESH. ALWAYS.™

- **FB3SS-2R** 40"L x 43"D x 55-1/2"H
- **FB4SS-3R** 53"L x 43"D x 55-1/2"H
- **FB6SS-4R** 66"L x 43"D x 55-1/2"H

Included

- Blue Fin coated coil
- Clear sneeze guard glass w/ stainless steel posts
- Condiment pan support rails
- Integrated average product temperature of 40°F or less
- LED 4000K top light(s)
- NOTE: Pans not supplied with case.
- One year parts & labor warranty

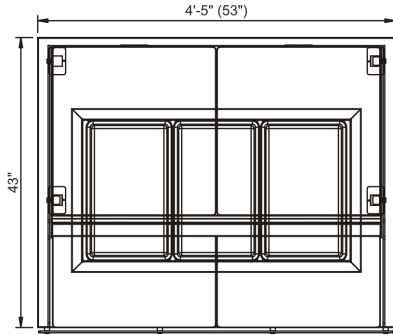


FB4SS-3R

Specify	Standard Features	Additional Options
EXTERIOR COLOR	• Laminate (stock colors)	• Laminate (non-stock colors) • Powder coated (stock/non-stock colors) • Powder coated Silversan Black • Stainless steel
LOWER FRONT PANEL COLOR	• Powder coated Silversan Black	• Powder coated (stock/non-stock colors) • Stainless steel
LOWER FRONT PANEL HEIGHT	• 15-5/8" Lower front panel height	• 8-5/8" Lower front panel height
BASE SUPPORT	• Rail system for shims	
BUMPER FRONT	• None	• 1" Boston bumper (specify color) • 1" Stainless steel plate rail bumper
COUNTERTOP SURFACE	• Stainless steel	• 3 cm. Quartz
REAR STORAGE	• Non-refrigerated rear storage (w/o doors)	• Non-refrigerated rear storage w/ sliding doors • Refrigerated rear storage w/ sliding doors
SNEEZE GUARD	• Clear lift-up sneeze guard glass w/ stainless steel posts	
ELECTRICAL CONNECTION	• Electrical leads (remote)	
REFRIGERATION	• Remote DX refrigeration	• Note: Remote doesn't incl Conds unit. Floor drain reqd. • Remote w/thermostat, solenoid & TXV
SENSOR	• None	• CPC discharge air sensor (remote)
MISCELLANEOUS		• Second year parts & labor warranty

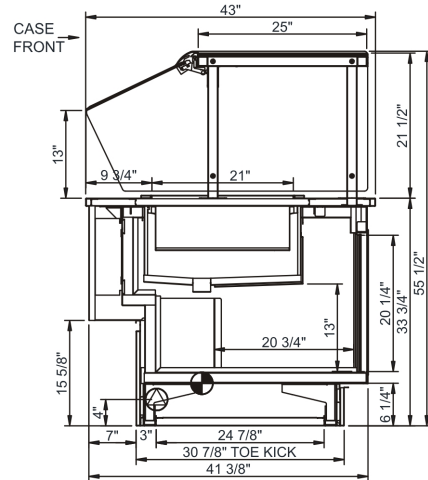
Intended Environment: Type I - Designed to operate in ambient conditions of 75°F with 55% relative humidity unless noted otherwise in system information below.		
Zone	Intended Product To Be Displayed	Warmest Avg Prod Temp ° F
1	Unpackaged refrigerated products	40

PLAN VIEW



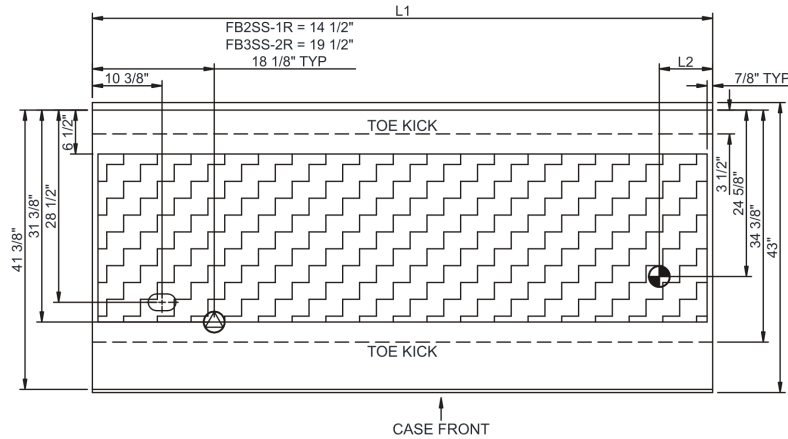
MODEL FB4SS-3R SHOWN

SIDE VIEW



NOTE: ALL DIMENSIONS APPROXIMATE

- ELECTRICAL JUNCTION BOX (SUPPLIED WITH 6" LEADS OR POWER CORD).
- REMOTE FLOOR SINK & UTILITIES ACCESS AREA.
- LOCATION OF DRAIN TUBE FOR REMOTE REF. ONLY (SUPPLIED WITH 3/4" OR 1 1/2" PVC TUBE).
- SELF-CONTAINED CASE SERVICE ACCESS AREA.
- REFRIGERATION LINE CONNECTION.
- DRY CASE SERVICE ACCESS AREA.



Model Technical Specifications

Model	L"	L1"	L2"	System Circuit Volts	Phs	Freq	Amps ***	Watts	Wires	NEMA Plug	SST	Conv. Rack BTUH	Para. Rack BTUH	Est Wt		
FB3SS-2R	N/A	40.00	7.88	Remote (DX)	Circuit #1	110-120	1	60	1.76	68	2+G	Leads Multiple	20.00	1123	1040	600
FB4SS-3R	N/A	53.00	7.88	Remote (DX)	Circuit #1	110-120	1	60	1.87	99	2+G	Leads Multiple	20.00	1296	1200	750
FB6SS-4R	N/A	66.00	7.88	Remote (DX)	Circuit #1	110-120	1	60	2.67	116	2+G	Leads Multiple	20.00	1469	1360	1,100

*** Does not include electric defrost on freezer models.

Regulatory Approvals:	
All Models	Accordance with AHRI Std 1200 ETL Listed to UL 471 ETL Listed to CAN/CSA 22.2 No. 120 ETL Sanitation to NSF/ANSI 7

Important Notes:

- ELECTRICAL NOTE:** If GFCI is required, a GFCI breaker MUST be used in lieu of a GFCI receptacle.
- ⚠ WARNING:** This product can expose you to chemicals, including Urethane (Ethyl Carbamate), which are known to the State of California to cause cancer and birth defects or other reproductive harm. For more information go to www.P65Warnings.ca.gov.



In Accordance with
AHRI Std 1200

DOE 2017
Energy Efficiency
Compliant