



SPEC SHEET

KoolMore 65 in. Commercial Bottle Cooler in Stainless Steel with Built-In Opener, ETL Listed, 19 cu. ft.

SKU: KM-BOC65-SS

FEATURES

- Stainless Steel Finish
- Convenient Rolling Caster Wheels
- Generous Overall Capacity: 19 cu. ft.
- Hassle-Free Automatic Defrost
- Voltage: 115V
- Temperature Range: 33-40°F
- ETL Listed for Safety and Sanitation Compliance



CLOSE UP IMAGES



TECHNICAL SPECS

Dimensions

Depth	64.5
Width	28
Height	34.2
Interior Depth	23
Interior Width	60
Interior Height	26
Shelf Width	22.8
Shelf Depth	21.8
Depth Including Handles	28
Depth Excluding Handles	28
Depth Less Door	28
Depth With Door Open 90 Degrees	28
Power Cord Length	98.4

Capacity

Weight	253
Gross Cubic Feet	19.1
Net Capacity Cu. Ft.	18.1
Number of 12 oz. bottles	248
Number of 12 oz. cans	532

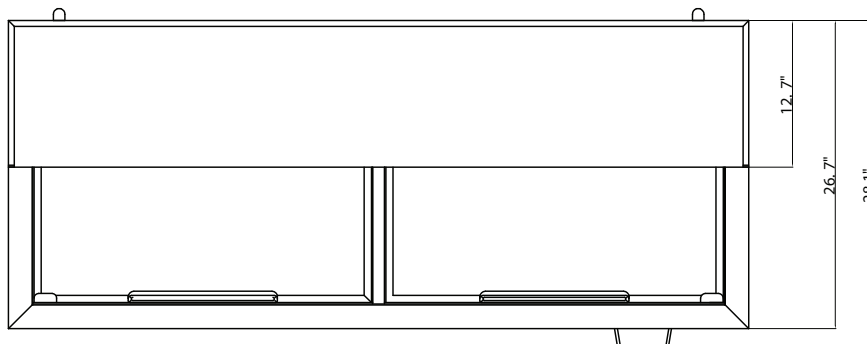
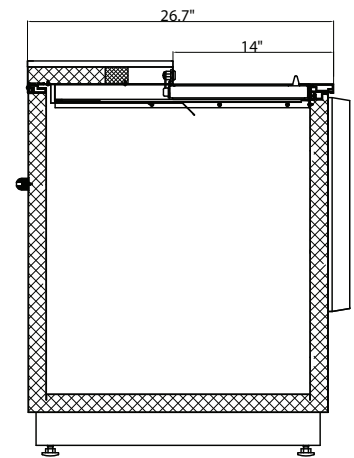
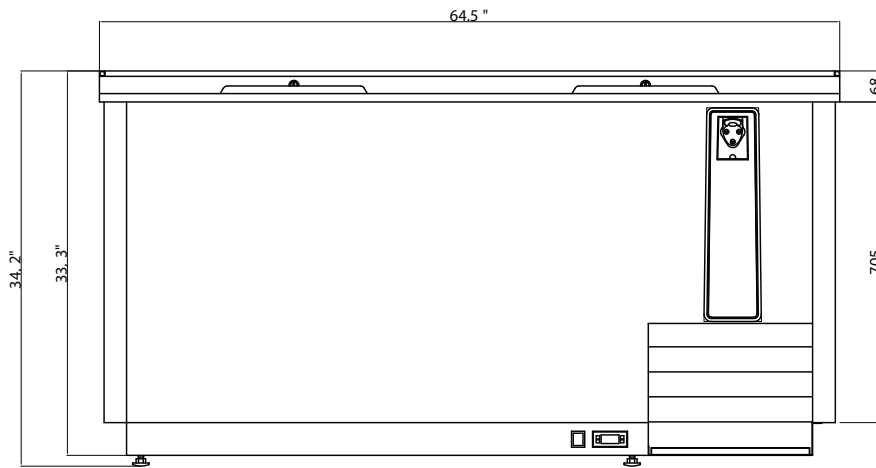
Features & Material

Door Style	SLIDING
Number Of Doors	2
Number Of Shelves	3
Defrost Type	Automatic
Refrigerant Type	R290
Temperature Control Type	Digital
Ambient Temperature Range	90 F
Temperature Range	33-40 F
Casters	4
Light Type	No Light
Shelf Material Type	Plastic Coated
Interior Material	aluminum
Exterior Material	painted steel

Electric Data & Certifications

Amps	2.6
Phase	1
Plug Type	NEMA 5-15P
Voltage	115
Hertz	60
Wattage	264
Horsepower	0.3
Certifications	ETL Listed for Safety and Sanitation

Plan View



CERTIFICATIONS



706 Eastern Parkway STE 1G, Brooklyn NY 11213
718-576-6342
info@koolmore.com