



# Arctic Fire Self-Contained Refrigerated Or Freezer Base

Item: \_\_\_\_\_  
 Quantity: \_\_\_\_\_  
 Project: \_\_\_\_\_  
 Approval: \_\_\_\_\_  
 Date: \_\_\_\_\_

Models:

**REFRIGERATION UNITS**

- |                                  |                                   |                                   |                                   |                                   |
|----------------------------------|-----------------------------------|-----------------------------------|-----------------------------------|-----------------------------------|
| <input type="checkbox"/> GN17C46 | <input type="checkbox"/> GN17C51  | <input type="checkbox"/> GN17C53  | <input type="checkbox"/> GN17C85  | <input type="checkbox"/> GN17C92  |
| <input type="checkbox"/> GN17C63 | <input type="checkbox"/> GN17C68  | <input type="checkbox"/> GN17C80  | <input type="checkbox"/> GN17C114 | <input type="checkbox"/> GN17C119 |
| <input type="checkbox"/> GN17C97 | <input type="checkbox"/> GN17C102 | <input type="checkbox"/> GN17C109 |                                   |                                   |

**FREEZER UNITS**

- |                                   |                                   |                                   |                                   |                                   |
|-----------------------------------|-----------------------------------|-----------------------------------|-----------------------------------|-----------------------------------|
| <input type="checkbox"/> GN17FC46 | <input type="checkbox"/> GN17FC51 | <input type="checkbox"/> GN17FC68 | <input type="checkbox"/> GN17FC80 | <input type="checkbox"/> GN17FC92 |
| <input type="checkbox"/> GN17FC53 | <input type="checkbox"/> GN17FC63 |                                   |                                   |                                   |



**Standard Features**

- Stainless steel exterior front and sides
- ABS interior door front and cabinet sides, stainless steel interior top, rear and bottom
- 6" (152mm) adjustable legs
- Compressor housing located on right end of unit standard
- Santoprene magnetic door gasket
- Heavy-duty stainless steel drawer slides with stainless steel bearings.
- Center located, flush mounted handle
- Front face mounted scroll type thermometer (digital thermometer on CE units)
- Removable track assembly drawers with a 10 year warranty for parts
- Standard drawers with mullion between drawers accommodates 12"x 20" x 4" deep hotel pans (GN 1/1 pans, 100 mm deep for CE units)

- Vertically mounted blower coil, HFC-404A refrigerant
- Hot gas condensate evaporator on refrigerator units, freezer units have electric condensate evaporator
- Compressor Tropicalized to 100° F (38°C)
- 5 year replacement parts compressor warranty; first year parts and labor

**Optional Features:**

- Extra deep drawers with out mullion to accommodate 6" deep hotel pans (150mm deep Gn 1/1 pans)
- Casters
- Doors and tray racks to accommodate sheet pans in lieu of drawers, N/A on 32" drawers
- Step-down sections with single drawers for modular top charbroilers (see separate section)

**Specifications:**

Garland low height Self-Contained Refrigerated Base for Garland Heavy-Duty Master Series Modular top. Stainless steel exterior front and sides. ABS interior door front and cabinet sides, and stainless steel interior top, rear and bottom. Santoprene magnetic door gasket. Galvanized steel bottom and back of base. CFC free foamed in place insulation. Removable stainless steel roller drawer assembly with self lubricating rollers. Roller assemblies carry a 10 year parts warranty. Standard drawers accommodate 12" x 20" x 4" deep hotel pans (Gn 1/1 pans, 100mm deep for CE models). HFC-404A refrigerant refrigeration system supplied with condensate evaporator. 6' cord and plug (North American models only come with NEMA 5-15 plug. CE approved units to be hard wired.). Vertically mounted blower coil on inside cabinet.. Units equipped with scroll type thermometer, (CE units have digital thermometer). 6" (152mm) adjustable legs standard.

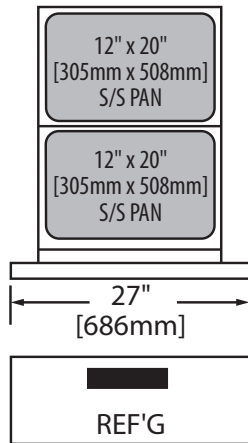


NOTE: Bases supplied with casters must be installed with an approved restraining device.

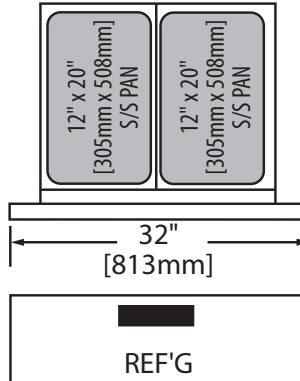
Arctic Fire Self-Contained Refrigerated Or Freezer Base



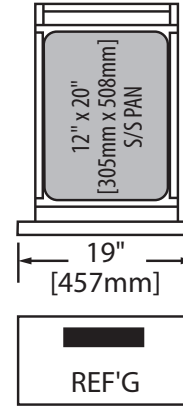
### DRAWER CONFIGURATIONS



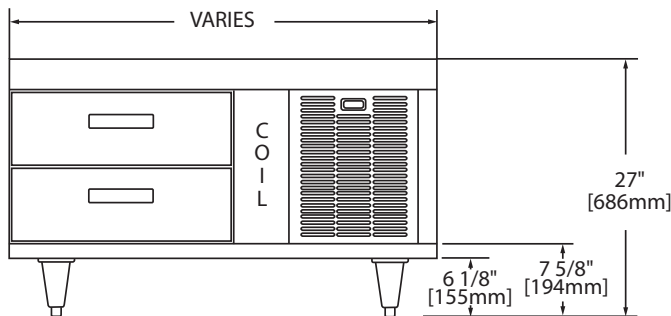
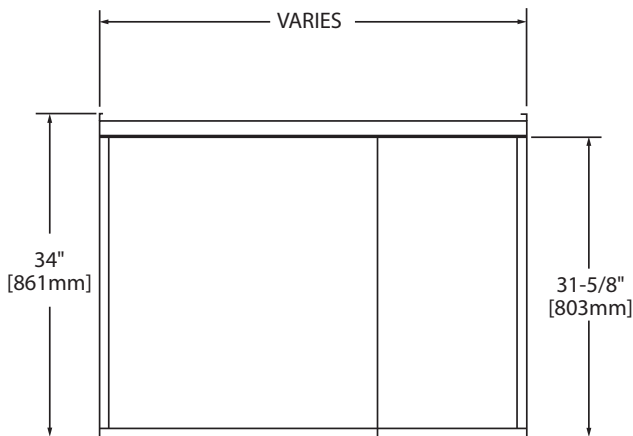
27" DRAWER



32" DRAWER



19" DRAWER



NOTE: Bases must be ordered with a Master Series or combination of Master Series Modular tops ONLY

**Bases With Modular Top Charbroilers:**

Units can be constructed with a "step-down" section to accommodate the increased height of a modular top charbroiler. The following are the considerations when installing a modular top charbroiler on a refrigerated base:

- Charbroiler must be mounted on either end. Center location is not possible
- Charbroiler must be at least 24" wide (M24BT), and up to 48" wide. (Note: 48" wide unit will consist of two (2) M24BT units).
- Only 19", single pan drawers are available (maximum 2 drawers wide)
- Drawer will accommodate 6" deep hotel pan (150 mm Gn 1/1 pan) as standard
- Refrigerated base only available. Freezer base not available
- Add suffix to model number to denote broiler width and side. Suffix determined by broiler width in inches (24, 34 or 48) and either the letter "L" for left side or "R" for right side, (ie. "-34L" when added to model number of base means that 34" of the width on the left side of the base will be stepped down to accommodate the charbroiler).

Garland products are not approved or authorized for home or residential use, but are intended for commercial applications only. Garland will not provide service, warranty, maintenance or support of any kind other than in commercial applications.

Form# AFSCCAN 08/10/10)

**MODEL NUMBERS**

GN = North American (115V-1Ph) (Shown Below)

GE = Europe (230V-1Ph) Replace "N" with "E" = CE Approved

**Self-Contained Refrigerators**

**Base Configuration (Left to Right)**

Model Number	Length In (mm)	Depth In (mm)	Height In (mm)	Draw Size Openings (2 drawers per section)			Full Size Hotel Pans
				19"	27"	32"	
GN17C46	46 (1168)	34 (864)	27 (686)	1			2
GN17C51	51 (1295)	34 (864)	27 (686)		1		4
GN17C53	53 (1346)	34 (864)	27 (686)			1	4
GN17C63	63 (1600)	34 (864)	27 (686)	1	1		6
GN17C68	68 (1727)	34 (864)	27 (686)		2		8
GN17C80	80 (2032)	34 (864)	27 (686)			2	8
GN17C85	85 (2195)	34 (864)	27 (686)			2	8
GN17C92	92 (2337)	34 (864)	27 (686)			2	8
GN17C97	97 (2464)	34 (864)	27 (686)	1		2	10
GN17C102	102 (2991)	34 (864)	27 (686)		2	1	12
GN17C109	109 (2769)	34 (864)	27 (686)		1	2	12
GN17C114	114 (2896)	34 (864)	27 (686)			3	12
GN17C119	119 (3023)	34 (864)	27 (686)			3	12

**Self-Contained Freezer**

**Base Configuration (Left to Right)**

Model Number	Length In (mm)	Depth In (mm)	Height In (mm)	Draw Size Openings (2 drawers per section)			Full Size Hotel Pans
				19"	27"	32"	
GN17FC46	46 (1168)	34 (864)	27 (686)	1			2
GN17FC51	51 (1295)	34 (864)	27 (686)		1		4
GN17FC53	53 (1346)	34 (864)	27 (686)		1		4
GN17FC63	63 (1600)	34 (864)	27 (686)	2			4
GN17FC68	68 (1727)	34 (864)	27 (686)	2			4
GN17FC80	80 (2032)	34 (864)	27 (686)	1	1		6
GN17FC92	92 (2337)	34 (864)	27 (686)		1	1	8

Form# AFSCCAN 08/10/10)



**MODEL NUMBERS**

GN = North American (115V-1Ph) (Shown Below)

GE = Europe (230V-1Ph) Replace "N" with "E" = CE Approved

**Self-Contained Refrigerators**

**Base Configuration (Left to Right)**

Model Number	Agency Reference Model #	H.P.	BTU	Volts/ Amps	CE Volts/Watts	Cu.FT. (crate)	Ship Weight lb/kg
GN17C46	000-201TP5GL	1/5	270	115/8	230/390	40	340/154
GN17C51	000-201TP5GM	1/5	292	115/8	230/390	45	360/163
GN17C53	000-201TP5GN	1/5	373	115/8	230/390	47	383/174
GN17C63	000-201TP5GO	1/5	432	115/8	230/390	52	434/197
GN17C68	000-201TP5GP	1/5	536	115/8	230/390	56	476/216
GN17C80	000-201TP5GQ	1/5	565	115/8	230/390	64	570/259
GN17C85	000-201TP5GR	1/5	565	115/8	230/390	67	604/274
GN17C92	000-201TP5GS	1/4	756	115/10	230/495	73	655/297
GN17C97	000-201TP5GT	1/4	756	115/10	230/495	77	680/309
GN17C102	000-201TP5GU	1/4	815	115/10	230/495	81	730/331
GN17C109	000-201TP5GV	1/4	852	115/10	230/495	85	774/351
GN17C114	000-201TP5GW	1/4	889	115/10	230/495	90	808/367
GN17C119	000-201TP5GX	1/4	995	115/10	230/495	95	850/386

**Self-Contained Freezer**

**Base Configuration (Left to Right)**

Model Number	Agency Reference Model #	H.P.	BTU	Volts/ Amps	CE Volts/Watts	Cu.FT. (crate)	Ship Weight lb/kg
GN17FC46	000-201TP5GY			115/10	230/400	40	340/154
GN17FC51	000-201TP5GZ			115/10	230/400	45	360/163
GN17FC53	000-201TP5G10			115/10	230/400	47	383/174
GN17FC63	000-201TP5G11			115/12	230/500	52	434/197
GN17FC68	000-201TP5G12			115/12	230/500	56	476/216
GN17FC80	000-201TP5G13			115/16*	230/850	64	570/259
GN17FC92	000-201TP5G14			115/16*	230/850	73	655/297

\*Note: Unit comes with Nema 5-20P plug

Note: All other North American units come with Nema 5-15P plug.

Form# AFSCCAN 08/10/10)

