



Profit from the Eagle Advantage®

# Specification Sheet

### Short Form Specifications

Eagle Q-LEVER® Overhead Storage Station, model # \_\_\_\_\_ . Features two 76" uprights with legs & feet, X-brace assembly, and two overshelves.

Eagle Q-LEVER® Task Station, model # \_\_\_\_\_ . Features the same as Overhead Storage Station, plus removable stainless steel top and removable wall grid.

Uprights feature Valu-Master® gray epoxy. Shelves offered with Valu-Master® gray or Valu-Gard® green epoxy finish.



Overhead Storage Station



Task Station



Item No.:	_____
Project No.:	_____
S.I.S. No.:	_____

## Q-LEVER® Overhead Storage Stations and Task Stations

### MODELS:

- |                                      |                                      |
|--------------------------------------|--------------------------------------|
| <input type="checkbox"/> Q2436*76-OS | <input type="checkbox"/> Q2436*76-TS |
| <input type="checkbox"/> Q2442*76-OS | <input type="checkbox"/> Q2442*76-TS |
| <input type="checkbox"/> Q2448*76-OS | <input type="checkbox"/> Q2448*76-TS |
| <input type="checkbox"/> Q2454*76-OS | <input type="checkbox"/> Q2454*76-TS |
| <input type="checkbox"/> Q2460*76-OS | <input type="checkbox"/> Q2460*76-TS |
| <input type="checkbox"/> Q3036*76-OS | <input type="checkbox"/> Q3036*76-TS |
| <input type="checkbox"/> Q3042*76-OS | <input type="checkbox"/> Q3042*76-TS |
| <input type="checkbox"/> Q3048*76-OS | <input type="checkbox"/> Q3048*76-TS |
| <input type="checkbox"/> Q3054*76-OS | <input type="checkbox"/> Q3054*76-TS |
| <input type="checkbox"/> Q3060*76-OS | <input type="checkbox"/> Q3060*76-TS |

\* See charts on back page for complete model numbers.

### Design & Construction Features

- Overhead Storage Stations and Task Stations include uprights with legs and feet, X-brace assembly, and two wire overshelves.
- Task Stations also include 14 gauge type 304 stainless steel removable tabletop and removable wall grid with 3" x 3" (76 x 76mm) mesh.
- Feet are prepunched to allow fastening\* to floor.
- Choice of Valu-Master® gray or Valu-Gard® green epoxy finish on shelves.
- Valu-Master® gray epoxy finish on uprights.

\* Hardware to fasten unit to floor not included.

### Options / Accessories

- Drawers (for Task Station)

### EAGLE GROUP

100 Industrial Boulevard  
Clayton, DE 19938-8903 USA

Phone: 302-653-3000 • 800-441-8440

Fax: 302-653-2065

www.eaglegrp.com • www.eaglemhc.com

For custom configuration or fabrication needs, contact our SpecFAB® Division.

Phone: 302-653-3000 • Fax: 302-653-2065 • e-mail: quotes@eaglegrp.com

### Certifications / Approvals



AutoQuotes



EG01.61 Rev. 06/22

Spec sheets available for viewing, printing or downloading from our online literature library at [www.eaglegrp.com](http://www.eaglegrp.com)

Eagle Foodservice Equipment, Eagle MHC, and SpecFAB® are divisions of Eagle Group. ©2022 by the Eagle Group

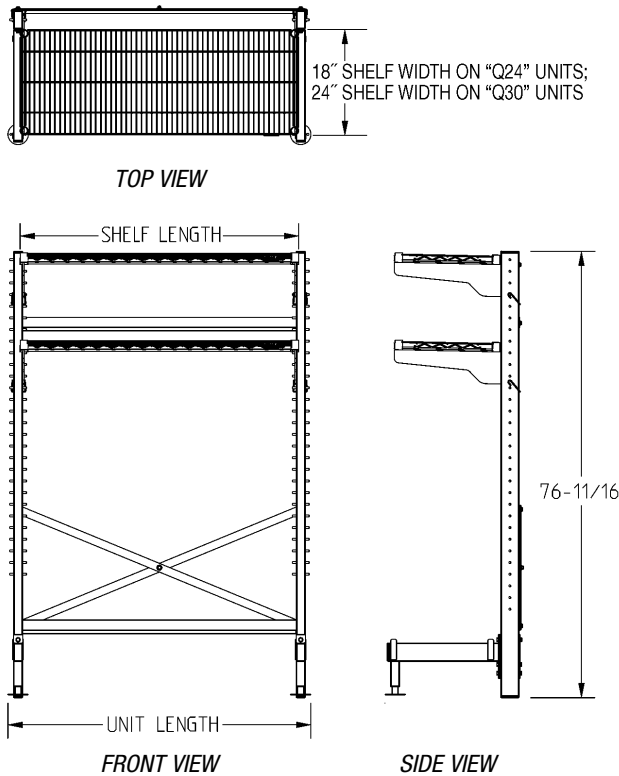


Profit from the Eagle Advantage®

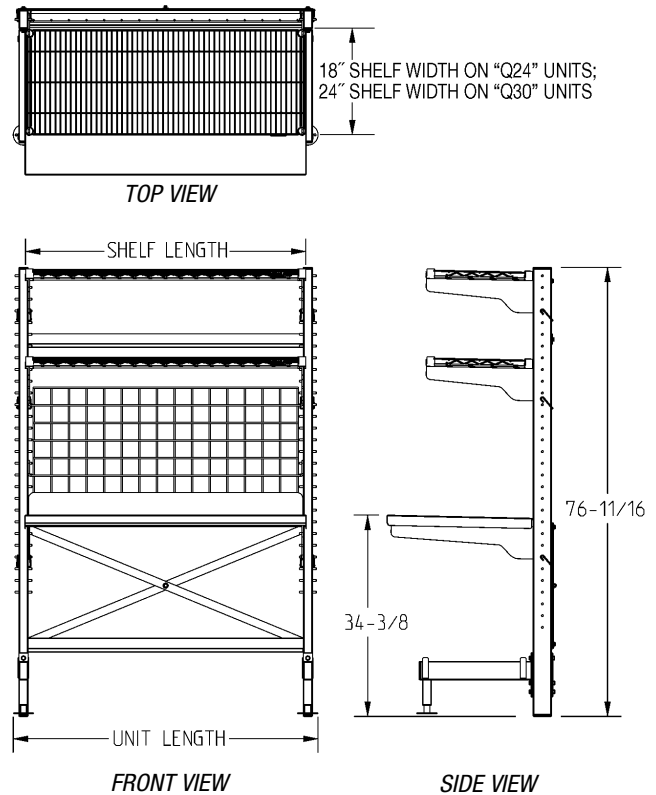
Item No.: \_\_\_\_\_  
 Project No.: \_\_\_\_\_  
 S.I.S. No.: \_\_\_\_\_

# Q-LEVER® Overhead Storage Stations and Task Stations

## Overhead Storage Stations



## Task Stations



### Overhead Storage Stations

shelf length	unit* length	...WITH 24" (610mm)* -OVERALL WIDTH				...WITH 30" (762mm)* -OVERALL WIDTH			
		weight		model #	weight		model #		
in.	mm	lbs.	kg	model #	lbs.	kg	model #		
<b>Units with Valu-Master® Grey Epoxy Coated Shelves</b>									
36"	914	40"	1016	137	62	Q2436V76-OS	154	70	Q3036V76-OS
42"	1067	46"	1168	142	64	Q2442V76-OS	161	73	Q3042V76-OS
48"	1219	52"	1320	145	66	Q2448V76-OS	166	75	Q3048V76-OS
54"	1372	58"	1473	152	69	Q2454V76-OS	169	76	Q3054V76-OS
60"	1524	64"	1626	157	71	Q2460V76-OS	174	79	Q3060V76-OS
<b>Units with Valu-Gard® Green Epoxy Coated Shelves</b>									
36"	914	40"	1016	137	62	Q2436VG76-OS	154	70	Q3036VG76-OS
42"	1067	46"	1168	142	64	Q2442VG76-OS	161	73	Q3042VG76-OS
48"	1219	52"	1320	145	66	Q2448VG76-OS	166	75	Q3048VG76-OS
54"	1372	58"	1473	152	69	Q2454VG76-OS	169	76	Q3054VG76-OS
60"	1524	64"	1626	157	71	Q2460VG76-OS	174	79	Q3060VG76-OS

### Task Stations

shelf length	unit* length	...WITH 24" (610mm)* -WIDE TABLETOP				...WITH 30" (762mm)* -WIDE TABLETOP			
		weight		model #	weight		model #		
in.	mm	lbs.	kg	model #	lbs.	kg	model #		
36"	914	40"	1016	198	90	Q2436V76-TS	207	94	Q3036V76-TS
42"	1067	46"	1168	213	97	Q2442V76-TS	222	101	Q3042V76-TS
48"	1219	52"	1320	222	101	Q2448V76-TS	231	105	Q3048V76-TS
54"	1372	58"	1473	237	108	Q2454V76-TS	246	112	Q3054V76-TS
60"	1524	64"	1626	249	113	Q2460V76-TS	258	117	Q3060V76-TS

\* Dimensions are nominal.

## EAGLE GROUP

100 Industrial Boulevard, Clayton, DE 19938-8903 USA  
 Phone: 302-653-3000 or 800-441-8440 • Fax: 302-653-2065  
 www.eaglegrp.com • www.eaglemhc.com

Printed in U.S.A.  
 ©2022 by Eagle Group  
 Rev. 06/22

Spec sheets available for viewing, printing or downloading from our online literature library at [www.eaglegrp.com](http://www.eaglegrp.com)

Although every attempt has been made to ensure the accuracy of the information provided, we cannot be held responsible for typographical or printing errors. Information and specifications are subject to change without notice. Please confirm at time of order.