



Gas Cheesemelter

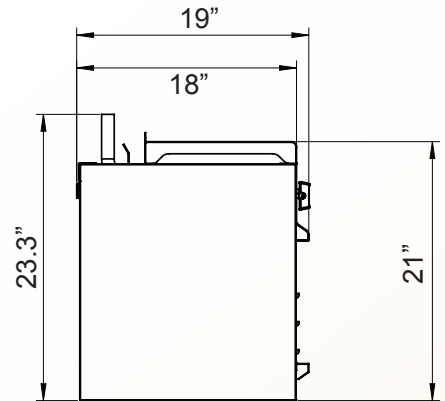
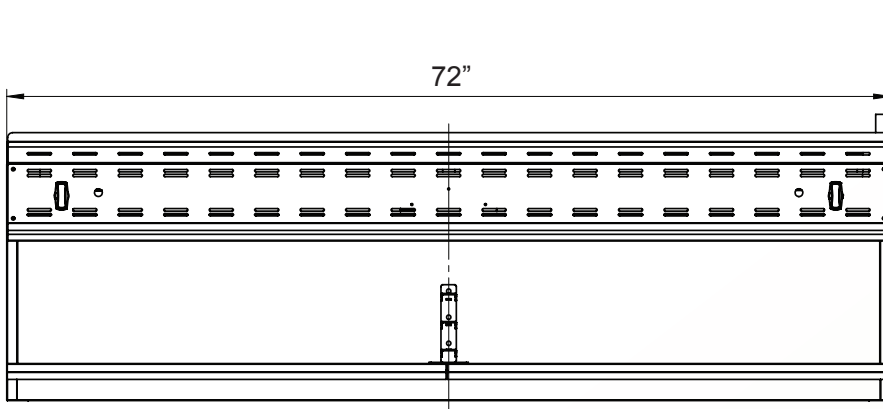
EMP-EGCM-72

Features

- Gas infrared burner for better and even heat distribution
- Extra large infrared burner to cover large cooking area
- Instant heat delivery - no need to pre-heat
- Standby pilot for easy start
- Three rack positions
- Chrome-plated wire rack
- Zinc alloy knob with chrome coating
- Oil collector tray for easy cleanup
- Easy conversion to/from NG/LP
- Stainless steel front and sides
- Manual control



MODEL	DESCRIPTION	TOTAL BTU/HR	SHIPPING DIMENSIONS W x D x H (IN)	UNIT WEIGHT	SHIPPING WEIGHT
EMP-EGCM-72	GAS CHEESEMELTER	60,000	73.3 x 25.2 x 30.3	117 lbs	161 lbs



Intertek



Intertek