

PP-12-SS

NOTE: Faucet handles not included.

Project: _____	AIA# _____
Item #: _____ Qty: _____	SIS# _____
Model #: _____	

## Pipe Pass-Thru Tower

PP- -

**Size:** Specify the number of faucets from 4, 6, 8, 10, 12, 14, 16

**Finish:**  
 SS = Grainline  
 MF = Mirror

### Standard Features

- 1/4" stainless steel shanks with 3/16" restriction lines
- All stainless steel faucets
- Surface mount, stainless steel drain pan with removable, perforated insert
- Tower mounting hardware for tops up to 4" thick

### Configurable Options

- 4, 6, 8, 10, 12, 14 or 16 faucets
- Grainline or mirror finish
- Air cooled for direct-draw system or glycol cooled for recirculating system
- Rinser faucet left, right or both sides of the drain
- Product lines left or right (excludes PP-10, PP-12, PP-14, and PP-16)

### Specifications

#### Materials

- Tower shell is 304 stainless steel; 0.065" wall thickness, 4" diameter
- Flange is 1/4", 304 stainless steel

#### Shank Sizes

- 1/4" I.D. with 3/16" fitting

#### Drains

- 1/2" tailpiece on drain pan

#### Rinser Faucet (optional)

- Accepts 3/8" cold water lead
- 30 psi water pressure regulator included
- 1.2 gallons per minute

### Optional Rinser Faucet

#### Installation Notes

- Unit does not provide a 1" air gap
- Must be installed with external backflow prevention to meet applicable federal, state, and local plumbing code requirements.
- Install in-line water pressure regulator (included)
- A separate shut-off valve is recommended (not included)

**NOTE: Rinser faucets are not intended for use with towers mounted to a refrigerator due to risk of water line freeze up.**

03012383  
 Rinser Faucet Assembly



**Intertek**  
 4004503  
 Conforms to NSF/ANSI STD 372

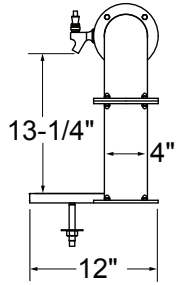
To view cleaning and care instructions, please visit: [https://www.glastender.com/PDF/F-423-011\\_ss\\_clean\\_care.pdf](https://www.glastender.com/PDF/F-423-011_ss_clean_care.pdf)

<b>Glastender, Inc.</b> • 5400 N Michigan Rd • Saginaw, MI • 48604-9780 989.752.4275 • 800.748.0423 • Fax 989.752.4444 <a href="http://www.glastender.com">www.glastender.com</a>	Approval/Notes:
<small>Specifications subject to change without notice. For current specifications please visit our website.</small>	

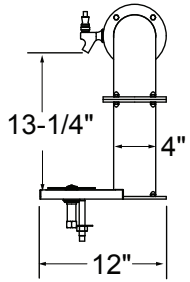
# Pipe Pass-Thru Towers

## Drawings

### SIDE ELEVATIONS



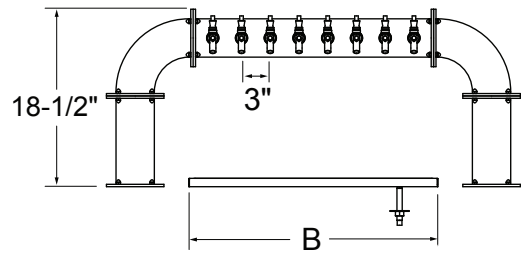
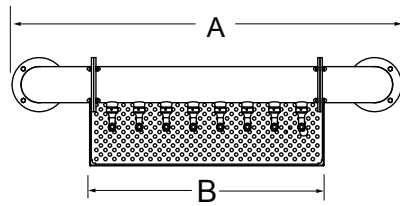
**NO RINSER FAUCET**



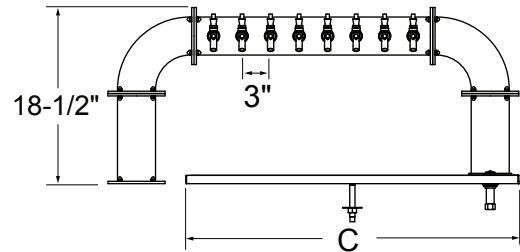
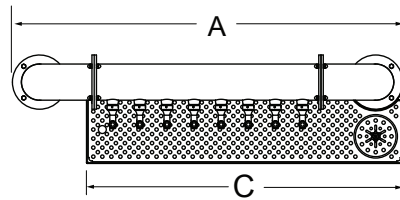
**WITH RINSER FAUCET**

### PLAN VIEWS

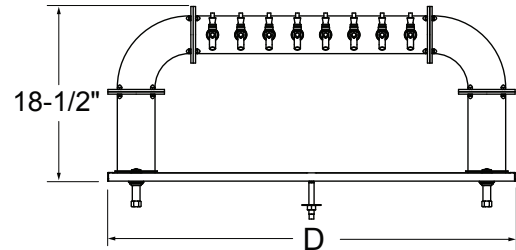
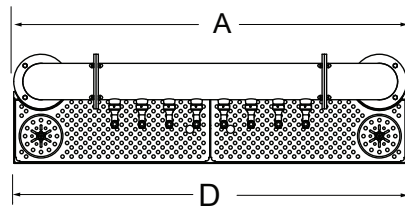
#### NO RINSER FAUCET



#### WITH RINSER FAUCET (RIGHT SHOWN)



#### WITH TWO RINSER FAUCETS



PIPE PASS-THRU TOWER							
FAUCETS	4	6	8	10	12	14	16
"A" WIDTH	31-1/4"	37-1/4"	43-1/4"	49-1/4"	55-1/4"	61-1/4"	67-1/4"
"B" WIDTH	14"	20"	26"	32"	38"	44"	50"
"C" WIDTH	23"	29"	35"	41"	47"	53"	59"
"D" WIDTH	31-1/4"	37-1/4"	43-1/4"	49-1/4"	55-1/4"	61-1/4"	67-1/4"