

## Cuisine Series Heavy Duty 24" Add-A-Unit

Project \_\_\_\_\_  
 Item \_\_\_\_\_  
 Quantity \_\_\_\_\_  
 CSI Section 11400  
 Approved \_\_\_\_\_  
 Date \_\_\_\_\_

### Models

- C24-1S
- C24-1M
- C24-1-1S
- C24-1-1M



Model C24-1S  
24" Add-A-Unit  
Griddle

### Standard Features

- Griddle top with 1" (25mm) thick steel plate.
- Hi-lo valve control (-1)
- Griddle control, with embedded thermostat sensor bulb (-1-1)
- Low to 450°F (232°C) (-1-1)
- Stainless front and sides
- Stainless steel front rail
- Stainless steel burner box
- 1 1/4" NPT front gas manifold
- Can be connected individually or in a battery
- 7" (178mm) high stainless steel stub back
- 6" (152mm) stainless steel adj. legs
- Modular unit (M) can be mounted on Polar Cuisine refrigerated base

### Options & Accessories

- Grooved griddle - (full or 1/2)
- Single or double deck high shelf or back riser
- Full-height stand for modular units with legs or casters
- Stainless steel intermediate shelf for cabinet base
- Stainless steel door for cabinet base units
- Stainless steel back
- Continuous plate rail, 48-72" for battery installations
- Gas shut-off valves: 3/4", 1", 1 1/4" NPT (Specify)
- Gas regulator: 3/4", 1", 1 1/4" NPT (Specify)
- Gas flex hose w/ quick disconnect: 3/4", 1", 1 1/4" (Specify)
- Rear gas connection: 3/4" NPT
- Set of (4) flanged feet (for fastening unit to the floor)
- Set of (4) 5" polyurethane non-marking swivel casters w/front brakes
- Set of (4) 6" swivel casters, w/front brakes
- Extension for 1/9 pans

### Specifications

Garland Cuisine Add-A-Unit, Model \_\_\_\_\_ with total BTU/h rating \_\_\_\_\_ when used with natural/propane gas. Stainless steel finish & 6" (152mm) legs w/adjustable feet.

**Griddles** - 1" (25mm) thick steel plate with 3" (76mm) wide grease trough. Burners rated 30,000 BTU/h each. One burner per 12" (305mm) section.

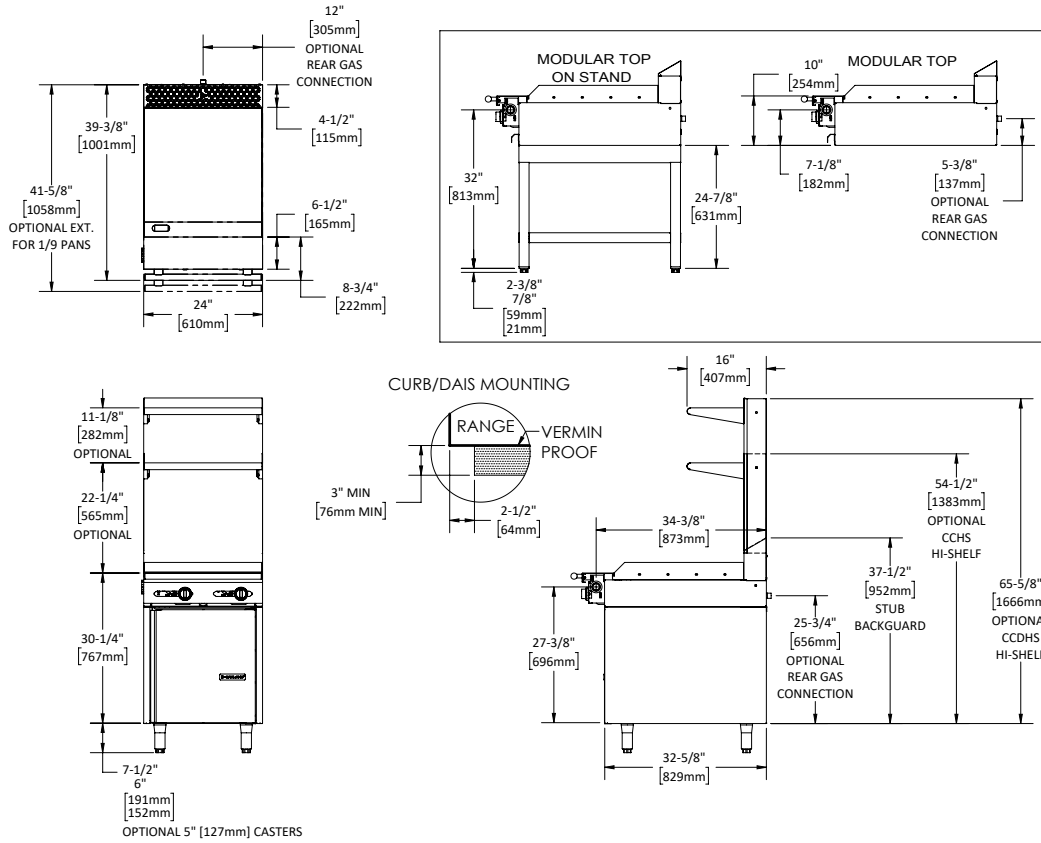
24" (610mm) modular Add-A-Units are not available w/ legs and should not be mounted independently unless installed on flanged feet and bolted to the floor.

NOTE: Ranges supplied with casters must be installed with an approved restraining device.



Cuisine Series Heavy Duty 24" Add-A-Unit

## Cuisine Series Heavy Duty 24" Add-A-Unit



Model #	Description	Total BTU/h NAT. Gas	Total BTU/h Propane	Shipping		Individual Burner Ratings (BTU/h)																	
				Cu Ft	lbs/kg	Burner	NAT.	PRO.															
C24-1S	24" (305mm) VG / Cabinet Base	60,000	60,000	23	380/172																		
C24-1M	24" (305mm) VG - w/Modular Top	60,000	60,000	20	342/155																		
C24-1-1S	24" (305mm) TG / Cabinet Base	60,000	60,000	23	380/172																		
C24-1-1M	24" (305mm) TG - w/Modular Top	60,000	60,000	20	342/155																		
						<table border="1"> <thead> <tr> <th>Dimensions: In (mm)</th> <th>Unit</th> <th>Cabinet</th> </tr> </thead> <tbody> <tr> <td>Width</td> <td>24" (610mm)</td> <td>19" (483mm)</td> </tr> <tr> <td>Depth</td> <td>37-7/8" (962mm)</td> <td>28-1/2" (724mm)</td> </tr> <tr> <td>Height</td> <td>30 1/4" (767mm)</td> <td>19-1/2" (495mm)</td> </tr> <tr> <td>Height w/legs</td> <td>36 1/4" (921mm)</td> <td>N/A</td> </tr> </tbody> </table>			Dimensions: In (mm)	Unit	Cabinet	Width	24" (610mm)	19" (483mm)	Depth	37-7/8" (962mm)	28-1/2" (724mm)	Height	30 1/4" (767mm)	19-1/2" (495mm)	Height w/legs	36 1/4" (921mm)	N/A
Dimensions: In (mm)	Unit	Cabinet																					
Width	24" (610mm)	19" (483mm)																					
Depth	37-7/8" (962mm)	28-1/2" (724mm)																					
Height	30 1/4" (767mm)	19-1/2" (495mm)																					
Height w/legs	36 1/4" (921mm)	N/A																					

VG = Manual Valve Controlled Griddle,  
TG= Thermostatic Controlled Griddle

Combustible Wall Clearance	
Sides	Back
10" (254mm)	6" (152mm)

Gas Pressure	NAT.	PRO.
Minimum Supply	7" WC	11" WC
Manifold Operating Pressure	6" WC	10" WC
Gas Manifold 1-1/4" NPT		

Garland reserves the right to make changes to the design or specifications without prior notice.

**Garland Commercial Ranges Ltd.**  
1177 Kamato Road,  
Mississauga, Ontario  
L4W 1X4 CANADA

**General Inquires 1-905-624-0260**  
USA Sales, Parts and Service 1-800-424-2411  
Canadian Sales 1-888-442-7526  
Canada or USA Parts/Service 1-800-427-6668

[www.garland-group.com](http://www.garland-group.com)  
7910  
01/24

