



T&S BRASS AND BRONZE WORKS, INC.

2 Saddleback Cove / P.O. Box 1088
Travelers Rest, SC 29690

Model No.

B-1172-T

Item No.

Travelers Rest, SC: 800-476-4103 • Simi Valley, CA: 800-423-0150 • Fax: 864-834-3518 • www.tsbrass.com

This Space for Architect/Engineer Approval

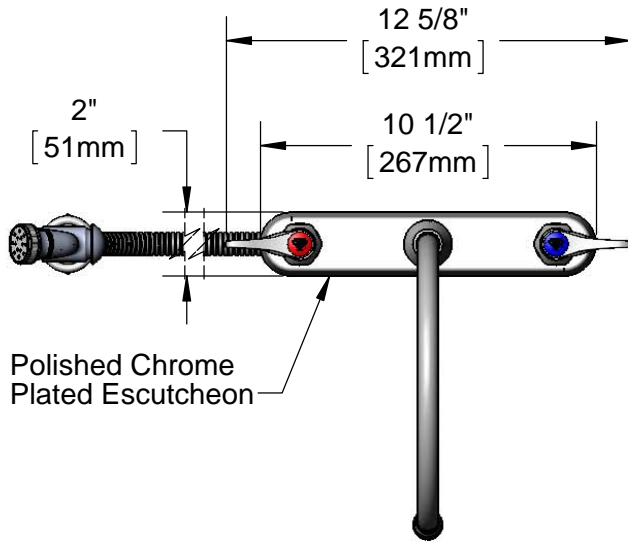
Job Name _____ Date _____

Model Specified _____ Quantity _____

Customer/Wholesaler _____

Contractor _____

Architect/Engineer _____



Polished Chrome
Plated Escutcheon

Swivel Gooseneck
w/ B-0199-02
2.2 GPM Aerator

B-0970-FE
Dual Check
Vacuum Breaker

002857-40
Spray Valve

360° Swivel
Piece

Quarter-Turn Eterna
Cartridges w/ Spring
Checks & Lever Handles
w/ Color Coded Indexes

1"
[26mm]

13 3/4"
[350mm]

8 13/16"
[224mm]

6 3/4"
[172mm]

Mounting
Surface

B-KF
Deck
Flange

3 5/16"
[84mm]

1"
[25mm]

1/8"
[3mm]
Maximum
Thickness

1/2" NPT
Male Inlets

(2) 150A
Optional Tailpieces &
Nuts for 1/4" NPT
Connection (Included)

8"
[203mm] 96" Flexible
Stainless Steel Hose

Rough-In Requirement:

Faucet: (3) ϕ 1" [25mm] Mounting Holes

Deck Flange: (1) ϕ 1 9/16" [40mm] Mounting Hole

Product Specifications:

8" Deck Mount Workboard Mixing Faucet, Quarter-Turn Eterna Cartridges w/ Spring Checks, Lever Handles, 8 13/16" Swivel Gooseneck, 2.2 GPM Aerator, 96" Flexible Stainless Steel Hose, Dual Check Vacuum Breaker, Push Button Spray Valve, Deck Flange & 1/2" NPT Male Inlets

Product Compliance:

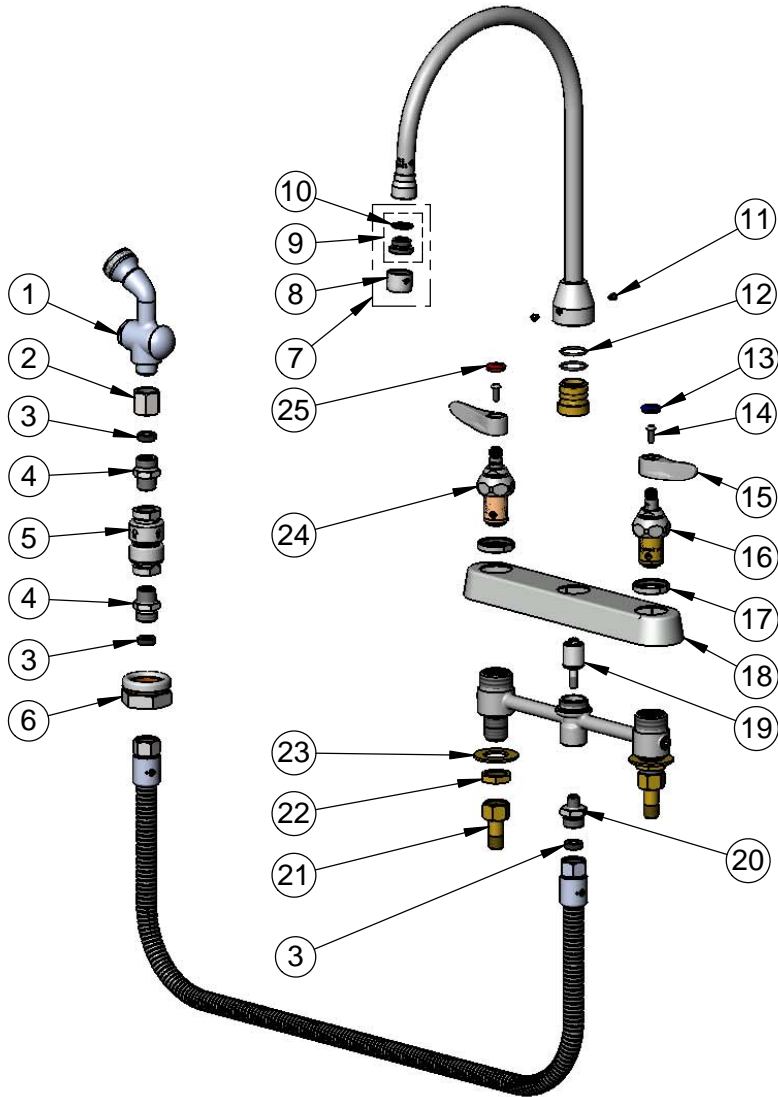
ASME A112.18.1 / CSA B125.1
NSF 61 - Section 9
NSF 372 (Low Lead Content)
EPA Act 2005 Non-Compliant (PRSV)
CSA B64.8 (VB)



T&S BRASS AND BRONZE WORKS, INC.
 2 Saddleback Cove / P.O. Box 1088
 Travelers Rest, SC 29690

Model No.
B-1172-T
 Item No.

Travelers Rest, SC: 800-476-4103 • Simi Valley, CA: 800-423-0150 • Fax: 864-834-3518 • www.tsbrass.com



ITEM NO.	SALES NO.	DESCRIPTION
1	002857-40	Spray Valve Assembly
2	146X	3/4-14 Coupling
3	010476-45	#27 Washer
4	053A	Adapter, 3/8" NPT Male
5	B-0970-FE	3/8" NPT Vacuum Breaker
6	B-KF	Protective Flange
7	B-0199-02	2.2 GPM Aerator, 3/8" NPSM Male
8	B-0199-01	2.2 GPM Aerator, 55/64"-27 UN Female
9	044A	3/8" to Aerator Adapter
10	001043-45	Washer
11	001486-45	Diverter Cover Screw
12	001069-45	O-ring
13	019363-45	Blue Button Index, Press-in
14	000925-45	Lab Handle Screw
15	019361-45	Lever Handle (New Style)
16	019382-40	Quarter-Turn New Style Eterna Cartridge w/ Spring Check, LTC
17	019376-40	Escutcheon Lock Nut
18	019375-40	B-1120 Eterna Workboard Escutcheon
19	002338-45	Valve Diverter Piston
20	000542-25	1/8" NPT x 3/4-14 Male Adapter
21	150A	1/4" NPT Tailpiece & Nut
22	002954-45	Shank Lock Nut
23	000999-45	Brass Lock Washer
24	019383-40	Quarter-Turn New Style Eterna Cartridge w/ Spring Check, RTC
25	019364-45	Red Button Index, Press-in

Product Specifications:

8" Deck Mount Workboard Mixing Faucet, Quarter-Turn Eterna Cartridges w/ Spring Checks, Lever Handles, 8 13/16" Swivel Gooseneck, 2.2 GPM Aerator, 96" Flexible Stainless Steel Hose, Dual Check Vacuum Breaker, Push Button Spray Valve, Deck Flange & 1/2" NPT Male Inlets

Product Compliance:

ASME A112.18.1 / CSA B125.1
 NSF 61 - Section 9
 NSF 372 (Low Lead Content)
 EPA Act 2005 Non-Compliant (PRSV)
 CSA B64.8 (VB)