

RACK CONVEYOR TYPE DISHWASHER

Blakeslee rack machines are state of the art machines designed to deliver superior cleaning performance and productivity, using the least amount of energy, water and chemicals. This machine is also available with optional blower dryer or an integrated heat recovery system. The top line model with the integrated heat recovery system offers energy savings of 20% over non equipped models depending on operational and site factors.

FEATURES

- Double rinse system granting high efficiency with low consumption
- Self-cleaning vertical wash pump, protected from electrical overloads.
- Two speed traction system with built-in clutch preventing derailment.
- Removable Stainless steel washing and rinsing arms for easier cleaning operation.
- Stainless steel surface filters on every tank, easily removable without detaching washing arms, to keep the water clean and free from soil and debris.
- Radial wash tank sloped to help emptying
- Economizers to allow operation only when the rack is detected on that specific area, avoiding any waste of water and energy.
- Pressure reducer stabilizes water pressure for an optimal final rinse.
- Available with blower dryer and blower dryer + heat recovery options
- Built in 18kW final rinse booster heater
- Optional 28kW final rinse booster available for a 70°F rise

CONTROLS / DISPLAY

- Low voltage, electronic soft touch panel with IPX5 security level.
- User-friendly and easy-to-clean.
- Auto timer switches off the rack conveyor motor, as well as other machine options. Limits operating expense.

CONSTRUCTION & FINISH

- Stainless steel AISI 304 structure
- Stainless steel AISI 316 tank and booster, fully insulated boiler to reduce thermal losses.
- Insulated double skin door, counterbalanced, equipped with anti-drop safety system.

DRAIN PUMP

- Break Tank safety system to fill tank and prevent backflow contamination.
- Vacuum Breaker to fill the booster and prevent the backflow of water, and avoid any contamination of the water supply in case of external depression.

RATED POWER (incoming water temperature at 140°F)

1 st Chemical Wash	Pump Rated Power	1.9 kW
	Tank Heating Element	14 kW
Pre-Rinse	Pump Rated Power	0.2 kW
	Pre-Rinse Heating Element	9 kW
Final Rinse	Total Booster Power	18 kW
	Total Installed Power	43.25 kW

RATED POWER

(incoming water temperature at 110°F – requires optional 28kW booster)

Final Rinse	Total Booster Power	28 kW
	Total Installed Power	53.25 kW



RC-64



RC-64BD



RC-64HDR

RACK SIZES:

Dish/Glass Rack	20in x 20in	500mm x 500mm
Cutlery Basket	19.25in x 7in	500mm x 500mm
Trays Basket	20in x 20in	500mm x 500mm

WATER CONSUMPTION

Per Rack	0.40(gal)	1.53(L)
----------	-----------	---------

OPERATING CYCLE & CAPACITY

Racks per hour (Min/Max)	240/340	240/340
--------------------------	---------	---------

TANK CAPACITY

1 st Chemical Wash	22.45 (gal)	85 (L)
-------------------------------	-------------	--------

CYCLE TEMPERATURES

Pre-Rinse	165°F	72°C
1 st Chemical Wash	165°F	72°C
Rinse	180°F	82°C

WATER REQUIREMENTS

Inlet Temperature	140°F	60°C
Inlet Temperature	110°F	43°C (requires 28kW booster)
Inlet Water Pressure	30-87psi	2.11- 6.12kg/cm ²
Flow Pressure	15-25psi	1.0-1.8kg/cm ²

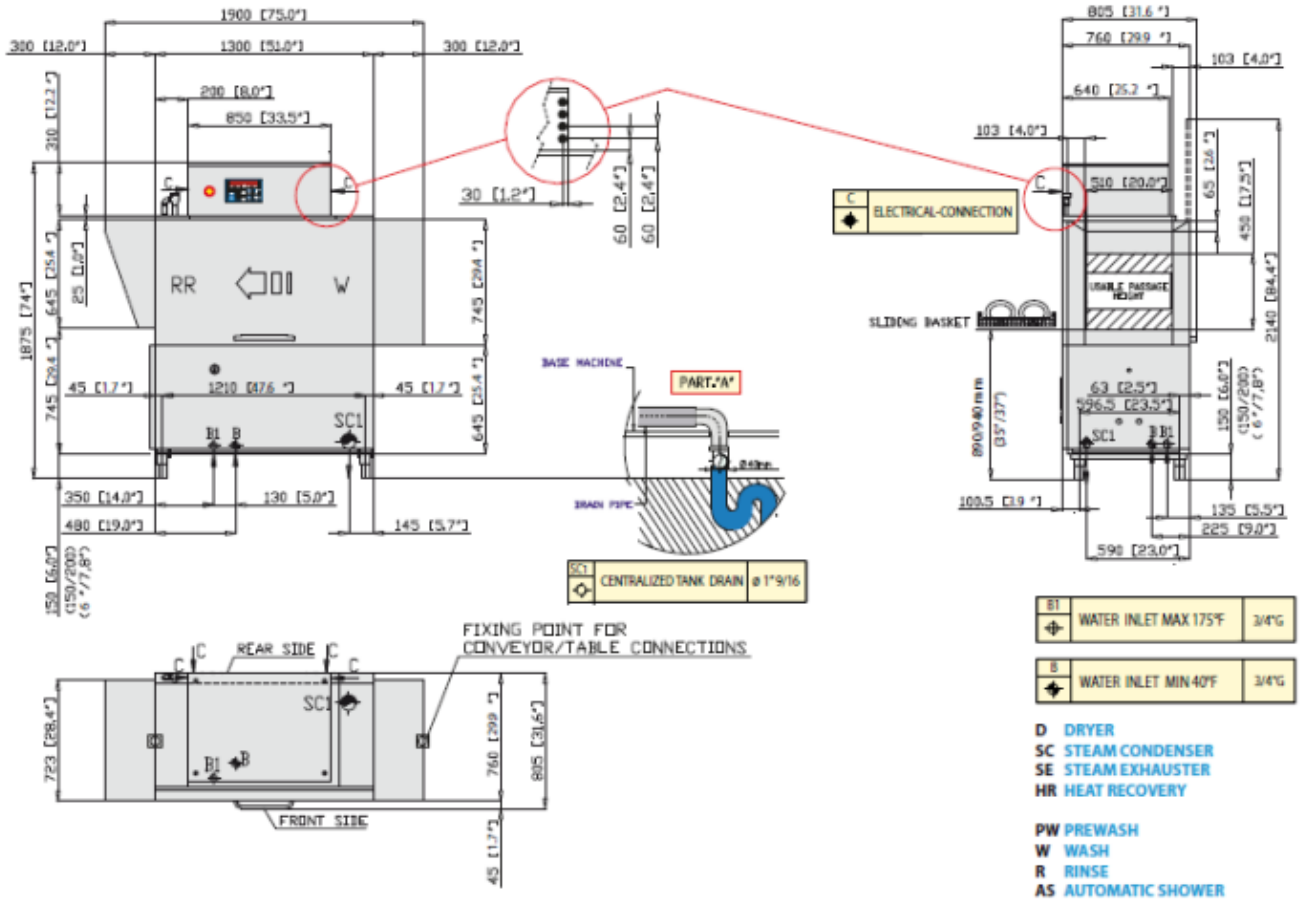
All specifications are dependent on water pressure and temperature



Due to periodic changes in designs, methods, procedures, policies and regulations, the specifications contained in this sheet are subject to change without notice.

While we exercise good faith efforts to provide information that is accurate, we are not responsible for errors or omissions in information provided or conclusions reached as a result of using the specifications. By using the information provided, the user assumes all risks in connection with such use.

RACK CONVEYOR TYPE DISHWASHER



ELECTRIC

43.25Kw Voltage/Hertz/Phase

208/60/3 - 123A
240/60/3 - 106A
480/60/3 - 53A

53.25Kw Voltage/Hertz/Phase

208/60/3 - 148A
240/60/3 - 128A
480/60/3 - 64A