

*Blueair* by  
**BLUENIX**

# WATER FILTER



**DH-R1**  
Filter Cartridge



**DH-S1**  
Single Filtration  
System



**DH-S2**  
Dual Filtration  
System



**DH-S3**  
Parallel Filtration  
System



**Keeps ice machine functioning at full capacity.**



**Best Quality Ice**

Eliminates off tastes and odor of ice and reduces up to 97% of disinfectant Chlorine from incoming water supply.



**Cost Effective**

Saves ice machine maintenance costs by reducing lime scale build up



**Flawless Filtration System**

Produces crystal clear ice by filtering out 96.3% of dirt and metallic particles greater than or equal to 0.5 microns.



## Specifications

- Flow rate: 2 Gpm (7.5 Lpm)
- Pressure: 30~100 psi (2.1~7Kg f/cm<sup>2</sup>)
- Temperature: 35~100°F (2~38°C)
- Capacity: 21,000 gal. (79,494L)
- Inlet & outlet size: 3/8 inch
- Time required to flush: 5 min. or until water runs clear
- Weight of the unit when operating (filled with water)

Single system: DH-S1, 6 lbs (2.72Kg)

Dual system: DH-S2, 14 lbs (6.35Kg)

Triple system: DH-S3, 27 lbs (12.6Kg)

- Height including filter cartridge

Single system: DH-S1, 19"

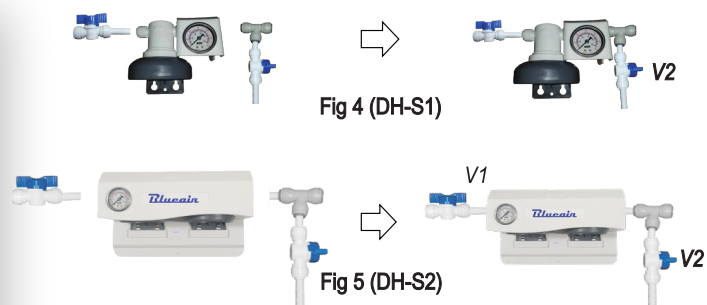
Dual system: DH-S2, 19 1/8"

Triple system: DH-S3, 19 1/4"

## Recommendations

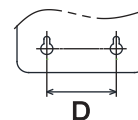
Model	Description	Ice machine capacity	Compatible Blueair Models
DH-S1	2 Gpm	Up to 500 lbs	BLUI-150A BLUI-250A BLMI-300A BLMI-500A BLMI-500AD
DH-S2	2*2 Gpm	650 through 900 lbs	BLMI-650A BLMI-900A
DH-S3	2*2*2 Gpm	1,400 lbs	BLMI-1400R

Parts		DH-S1 Single	DH-S2 Dual	DH-S3 Triple
Filter Head (S)		1	-	-
Filter Head (D)		-	1	1
Filter Cartridge (DH-R1)		1	2	3
Pressure Gauge		1	Built In(1)	Built In(2)
Shut-off Valve		2	2	2
T-fitting		1	1	1
3/8" Tubing		12ft	12ft	12ft
Anchor		2	2	2
Screw		2	2	2
Instructions	This guide	1	1	1



●Step 4.  
Determine where you will attach the Filter Head.

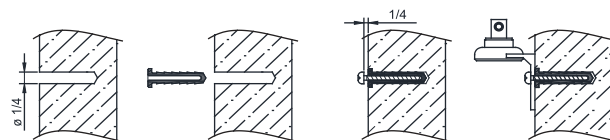
●Step 5.  
Refer to the distance diagram and table below to determine spacing required for hanging Filter-Head and attach the Anchors to the wall.



●Step 6.  
Insert the Screws as shown.

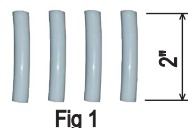
		DH-S1	DH-S2	DH-S3
D	inch	1 9/16	9 1/16	15 1/16
	mm	40	230	230

●Step 7.  
Hang the Filter Head on the Screws.

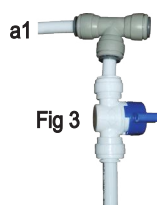


## Connection Guide

●Step 1  
Make 4 (four) 2-inch-long connection tubes by cutting provided 3/8" x 12ft Tubing as shown in Fig 1.



●Step 2.  
Connect the tubes to the shut off valve and T-fitting as shown in Fig 2 & Fig 3.



\*Note : Single system (DH-S1) does not need "a1" tube.

●Step 3.  
Assemble all the parts of the system you have as shown in Fig 4 and 5.

Make sure that the tubes are fully inserted into the quick coupler, otherwise water may leak. Insert tube until it stops, then pull back on tube to ensure it locks in place.

NSF System Trade Name : DH-S1 / DH-S2 / DH-S3  
NSF Replacement Cartridge No : DH-R1



System tested and certified by NSF International against NSF/ANSI Standard 42 for reduction of the Chlorine, Taste and Odor and Nominal Particulate Class 1

Refer to the user manual or spec sheet for detailed performance specifications of the filter system



- This product may expose you to chemicals including Diisononyl Phthalate(DINP), which is known to the State of California to cause cancer. For more information go to [www.P65Warnings.ca.gov](http://www.P65Warnings.ca.gov).  
- Ce produit peut vous exposer à des agents chimiques incluant le Diisononyl Phthalate(DINP), reconnu par l'Etat de Californie comme causant le cancer. Pour de plus amples renseignements, consultez le site [www.P65Warnings.ca.gov](http://www.P65Warnings.ca.gov).

●Step 8.  
Insert the Filter Cartridge into the Filter Head and turn it clockwise until it locks.



●Step 9 : Close the main valve of the water supply line before this step. Insert water supply tube and water outlet tube to Filter Head. Do not open the Shut-off Valve (V1, V2) until all Tubing is connected.



●Step 10 : Check all of the tube connections and fasten them securely.  
- Open the main valve of the water supply line. Open V1 valve.  
- **Before using the machine, open the V2 valve to flush out the initial filtrate. (at least 5 gallons or until clean water comes out)**  
\* You will need a container to flush out the initial filtrate water.  
\* Valve V2 must be closed after flushing.

Incorrect flushing of the filtration system can cause defects in the ice maker.

**Blueair by  
BLUENIX**

Blue Air has right to change specifications without further notice.