



Evo America, LLC  
20360 SW Avery Ct.  
Tualatin, OR 97062  
503-626-1802  
evoamerica.com

Project: \_\_\_\_\_  
Location: \_\_\_\_\_  
Item #: \_\_\_\_\_ Qty: \_\_\_\_\_  
Model #: \_\_\_\_\_

AIA #

SIS#

10-0054-DCS

Model# **10-0054-DCS**

**Evo® Affinity 30G DCS**



**Gas Display Cooking Station**

**OUTDOOR**

**Circular Presentation Cooktop With Display Cooking Station**

- 30" (762mm) circular black seasoned steel cooking surface.
- 1/4" (6.35mm) thick conditioned steel cooking surface retains heat for more consistent temperatures.
- Two circular temperature zones: inner and outer surface.
- Variable temperatures 225°F to 550°F (121°C to 288°C).
- With Natural Gas 36,267 BTUs.
- With LP Propane gas 37,638 BTUs.
- Knobs separately control inner and outer burners.
- Electronic push button ignition
- Two open shelves measuring 9-7/16" x 27-5/8" x 21" (239mm x 701mm x 533mm)
- Locking casters or optional adjustable seismic feet.
- Natural Gas or LP Propane gas option.

**Designed For Display Kitchens And Cafeterias**

- Zero clearance to adjoining counters and cabinetry.
- Stainless steel construction for easy cleaning.
- AutoCAD libraries listed on The KCL CADalog.

**Easy Operation, Easy Maintenance, Easy Cleanup**

- Food service staff skill level: Intermediate.
- Cooking techniques: sauté, braise, flattop (plancha) grilling, deep fry, pan fry, roast, poach, steam, toast.
- Cook surface is extremely durable and easy to clean.
- Cooking station shelving is easy to clean.

**SHORT FORM SPECIFICATIONS:**

The Evo Affinity 30G Display Cooking Station has a 30" (762mm) diameter, 1/4" (6.35mm) thick, seasoned steel cook surface heated underneath by inner and outer gas tube burners. Surface temperatures range from 225°F to 550°F (121°C to 288°C) from the center to the outside edge. The Affinity 30Ge Display Cooking Station is free standing stainless steel cabinet with open storage space. Available with either Natural Gas or LP Propane. An ideal solution for any outdoor display cooking venue.

**Data**

Model	Cook Surface	Dimensions			BTU Rate	Net Weight	Ship Weight
		H	W	D			
10-0054-DCS	30 Inches	39 3/4" 991mm	50" 1270mm	36" 914mm	NG 36,267 LP 37,638	345 lbs 157 kg	430 lbs 195 kg

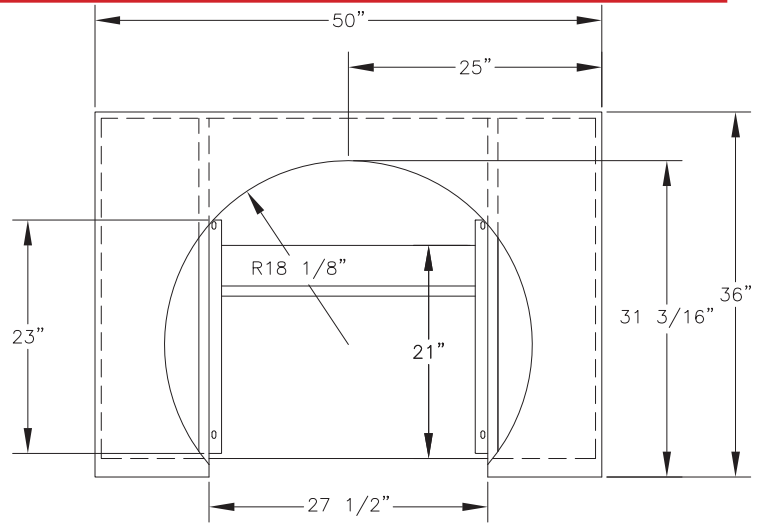
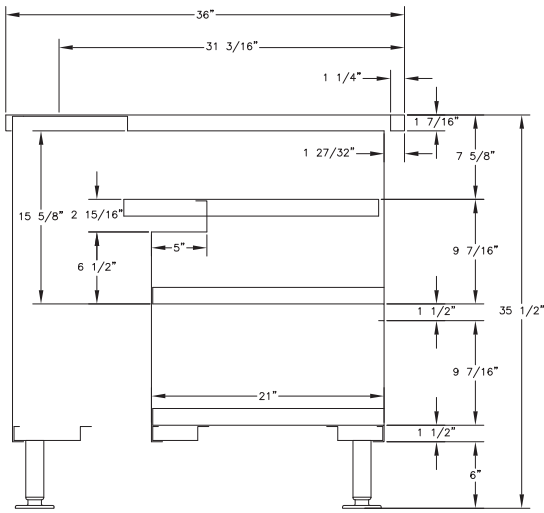


Due to ongoing product improvement, specifications are subject to change without notice.

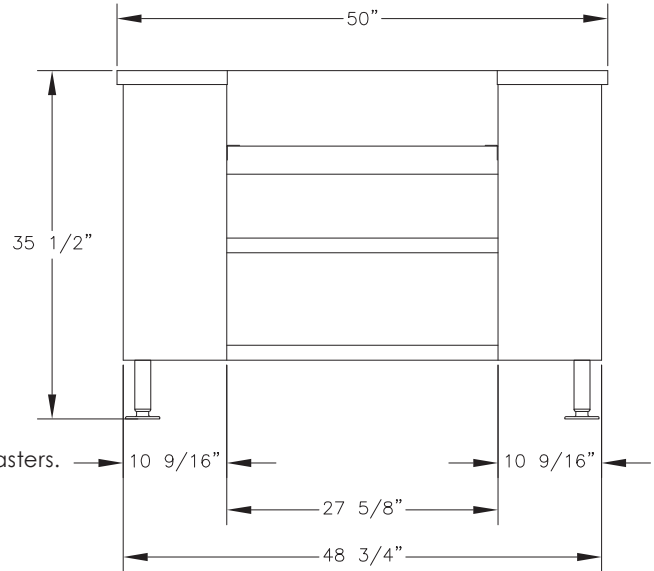
			Evo AutoCAD files 		Approvals:	Available At:
--	--	--	-----------------------	--	------------	---------------



Model# **10-0054** **Evo® Affinity 30G DCS**



Available with seismic feet or locking casters.



<b>INSTALLATION REQUIREMENTS</b>	
Cooking surface must be installed level.	
<b>NATURAL GAS CONNECTION</b>	<b>LP PROPANE CONNECTION</b>
<b>OPERATING PRESSURE</b> No regulator, connect to an outlet pressure of 7" water column.	<b>OPERATING PRESSURE</b> Regulator is set for an outlet pressure of 11" water column.
<b>INLET / SUPPLY CONNECTION</b> 1/2" FNPT. 12' Hose with 1/2" FNPT Quick Disconnect Supplied. 1/2" NPT to 3/8" Flare supplied.	<b>INLET / SUPPLY CONNECTION</b> 1/2" FNPT Inlet. 5' Hose & Regulator with QCC1 Supplied. 1/2" NPT to 3/8" Flare supplied.
<b>BTUs:</b> 36,267	<b>BTUs:</b> 37,638
<b>CONNECTION LOCATION</b> Gas inlet right rear chassis.	<b>CONNECTION LOCATION</b> Gas inlet right rear chassis.
<b>DIMENSIONS</b>	<b>WEIGHT</b>
<b>MAXIMUM (H X W)</b> 39-3/4" x 50" x 36" (991mm x 1270mm x 914mm)	<b>NET:</b> 345 lb EST. (157 kg) <b>SHIP:</b> 430 lb EST (195 kg)
<b>COOK SURFACE</b> 30" diameter (762mm)	<b>CRATE DIMENSIONS:</b> 43.5" x 58" x 44" (1104mm x 1473mm x 1117mm)
<b>STANDARD FEATURES</b>	<b>ACCESSORIES INCLUDED</b>
<ul style="list-style-type: none"> <li>30" circular black seasoned steel cook surface built into stainless steel cabinet with dual storage shelves.</li> <li>2 removable spill over trays contained in front opening doors.</li> <li>Electronic push button ignition.</li> <li>Stainless steel lid.</li> </ul>	<ul style="list-style-type: none"> <li>Professional grill surface cleaning kit (3M brand) - Includes handle, cook surface cleaning pad and screen.</li> <li>2 stainless steel spatulas and 1 stainless steel scraper.</li> <li>Owner's Manual &amp; Use and Care Instructions.</li> </ul>