



PROJECT: _____
 ITEM # _____ QTY: _____
 MODEL # _____
 AIA # _____ SIS # _____

REMOTE BLAST CHILLER/SHOCK ROLL-IN FREEZER

REMOTE BLAST CHILLER/SHOCK ROLL-IN FREEZER

VBCF20-230P

EXCLUSIVE WARRANTY

- ▶ 3 Year Parts & Labor Warranty
- ▶ 5 Year Compressor Warranty
- ▶ Exclusive 2 Year Warranty On Magnetic Door Gaskets

CABINET CONSTRUCTION

- Stainless Steel Exterior And Interior
- Die-Formed Interior Floor Has Rounded Corners
- Central Drain For Easy Cleaning
- Anti-Condensation Perimeter Heating Around Door Opening
- Ergonomic Door Handle And Stainless Steel
- Snap In Place Magnetic Gaskets Self Closing Door With Hold Open Stop At 100°

FEATURES

- Soft And Hard, Timed Or Core Probe Blast Chilling
- Soft And Hard, Timed Or Core Probe Shock Freezing
- Automatic Recognition Of Core Probe
- Multi Point Sensor Temperature Display Button
- Core Probe Heater Button
- HACCP Alarm Display Button
- Pre-Cooling Cycle Button
- Adjustable Evaporator Fan Speed Button
- Timed Manual Defrost Button
- USB Data Recorder
- Infinity Mode Program With Adjustable Set Point
- Automatic Conservation Mode At End Of Cycle
- On Board Recipe Book With 68 Pre-Set Programs
- 99 Free Memory Positions For Custom Programs
- LCD Illuminated Temperature Display
- Real Time Clock
- One, High Precision Heated Multi Sensor Probe
- Maximum Interior Dimensions For Carts: 26"W x 33"D x 75"H (not included)
- Ramp Dimension: 35.3"W x 31.9"D (ramp not included)

REFRIGERATION

- Refrigeration System Uses R404 Refrigerant (condensing unit to be provided by others)
- Evaporator Fitted With A High Flow Rate Fan Insures Maximum Cooling Efficiency
- Indirect Air Flow Assures Highest Product Quality
- Manual Defrosting With Door Open On A Timed Cycle
- Blast Chilling (194°F to 37°F in 90 minutes) Or Shock Freezing (194°F to 0°F in 240 minutes) Cycles



Note: Shown With Optional Ramp



Please Verify Qualifying Units By Visiting:
www.energystar.gov/cfs

OPTIONS & ACCESSORIES

- Single Sensor Probes (up to 4 possible)
- Change Door Swing
- Ramp (not included)

3779 Champion Blvd, Winston-Salem, NC 27105
 ph: (888) 845-9800 | fax: (800) 253-5168
 Sales@VictoryRefrigeration.com | VictoryRefrigeration.com

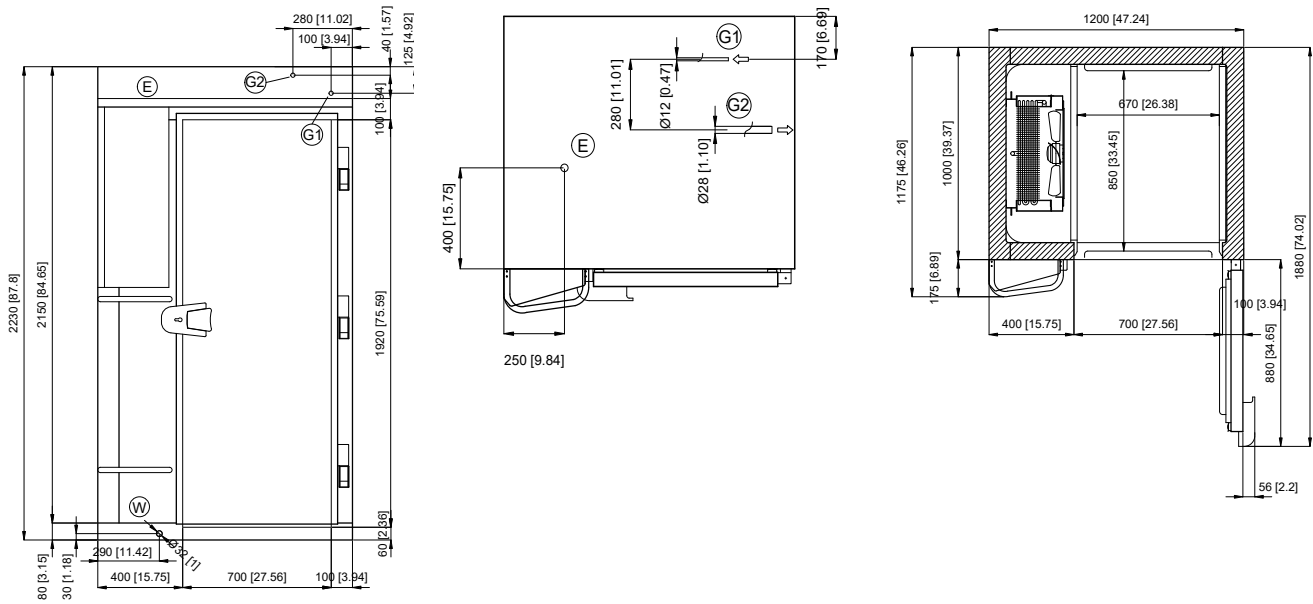
Rev. 7/1/24 Printed in U.S.A.

APPROVAL: _____ DATE: _____



REMOTE BLAST CHILLER/SHOCK ROLL-IN FREEZER

VBCF20-230P



We reserve the right to change specifications and product design without notice. Such revisions do not entitle the buyer to corresponding changes, improvements, additions or replacements for previously purchased equipment. Dimensional tolerances +/- 1/4". Metric dimensions (MM)

| CHARACTERISTICS | | REFRIGERATION DATA | | SHIPPING DETAILS | |
|------------------------------------|-----------------|---|---------|---------------------|---------|
| Width, Overall (in.) | 47.24" | Condensing Unit Size, HP | N.A. | Height | 92" |
| Depth, Overall (with handle) (in.) | 46.26" | Refrigerant | R404 | Width | 51" |
| Height Overall (in.) | 87.80" | Capacity (BTU/HR) (113°F/-13°F) | 24,551 | Depth | 71" |
| Width, Door Open 90° (in.) | 74.02" | Heat Rejection (W) (14°F/95°F) | N.A. | Crated Weight | 976 lbs |
| Door Opening (in.) | 27.56" x 75.59" | Refrigerant Amount (lbs) | N.A. | * Pans Not Included | |
| Wall Thickness (in) | 3.94" | PAN COUNT & PERFORMANCE | | | |
| Capacity Mobile Cart(s) | 1 GN 1/1 | Sheet Pan Capacity* (18" x 26") Or Steam Table Pan Capacity* (12" x 20") | 20 | | |
| Doors | 1 | Chilling Capacity In 90 Min | 230 lbs | | |
| ELECTRICAL DATA | | Freezing Capacity In 240 Min | 150 lbs | | |
| Cabinet Voltage | 208-240/60/1 | Climate Class | 5 | | |
| Total Amperes | 5.7 | | | | |
| NEMA Plug | N.A. | | | | |

3779 Champion Blvd, Winston-Salem, NC 27105 | ph: (888) 845-9800 | fax: (800) 253-5168

Sales@VictoryRefrigeration.com | VictoryRefrigeration.com

Rev. 7/1/24 Printed in U.S.A.

