



PROJECT: \_\_\_\_\_  
 ITEM # \_\_\_\_\_ QTY: \_\_\_\_\_  
 MODEL # \_\_\_\_\_  
 AIA # \_\_\_\_\_ SIS # \_\_\_\_\_

REMOTE BLAST CHILLER/SHOCK ROLL-IN FREEZER

## REMOTE BLAST CHILLER/SHOCK ROLL-IN FREEZER

### VBCF20-175P

#### EXCLUSIVE WARRANTY

- ▶ 3 Year Parts & Labor Warranty
- ▶ 5 Year Compressor Warranty
- ▶ Exclusive 2 Year Warranty On Magnetic Door Gaskets



Note: Shown With Optional Ramp

#### CABINET CONSTRUCTION

- Stainless Steel Exterior And Interior
- Die-Formed Interior Floor Has Rounded Corners
- Central Drain For Easy Cleaning
- Anti-Condensation Perimeter Heating Around Door Opening
- Ergonomic Door Handle And Stainless Steel
- Snap In Place Magnetic Gaskets Self Closing Door With Hold Open Stop At 100°

#### FEATURES

- Soft And Hard, Timed Or Core Probe Blast Chilling
- Soft And Hard, Timed Or Core Probe Shock Freezing
- Automatic Recognition Of Core Probe
- Multi Point Sensor Temperature Display Button
- Core Probe Heater Button
- HACCP Alarm Display Button
- Pre-Cooling Cycle Button
- Adjustable Evaporator Fan Speed Button
- Timed Manual Defrost Button
- USB Data Recorder
- Infinity Mode Program With Adjustable Set Point
- Automatic Conservation Mode At End Of Cycle
- On Board Recipe Book With 68 Pre-Set Programs
- 99 Free Memory Positions For Custom Programs
- LCD Illuminated Temperature Display
- Real Time Clock
- One, High Precision Heated Multi Sensor Probe
- Maximum Interior Dimension For Carts: 26"W x 33"D x 75"H (not included)
- Ramp Dimension: 35.3"W x 31.9"D (ramp not included)

#### REFRIGERATION

- Refrigeration System Uses R404 Refrigerant (condensing unit to be provided by others)
- Evaporator Fitted With A High Flow Rate Fan Insures Maximum Cooling Efficiency
- Indirect Air Flow Assures Highest Product Quality
- Manual Defrosting With Door Open On A Timed Cycle
- Blast Chilling (194°F to 37°F in 90 minutes) Or Shock Freezing (194°F to 0°F in 240 minutes) Cycles



Please Verify Qualifying Units By Visiting:  
[www.energystar.gov/cfs](http://www.energystar.gov/cfs)

#### OPTIONS & ACCESSORIES

- Single Sensor Probes (up to 4 possible)
- Change Door Swing
- Ramp (not included)

3779 Champion Blvd, Winston-Salem, NC 27105

ph: (888) 845-9800 | fax: (800) 253-5168

Sales@VictoryRefrigeration.com | VictoryRefrigeration.com

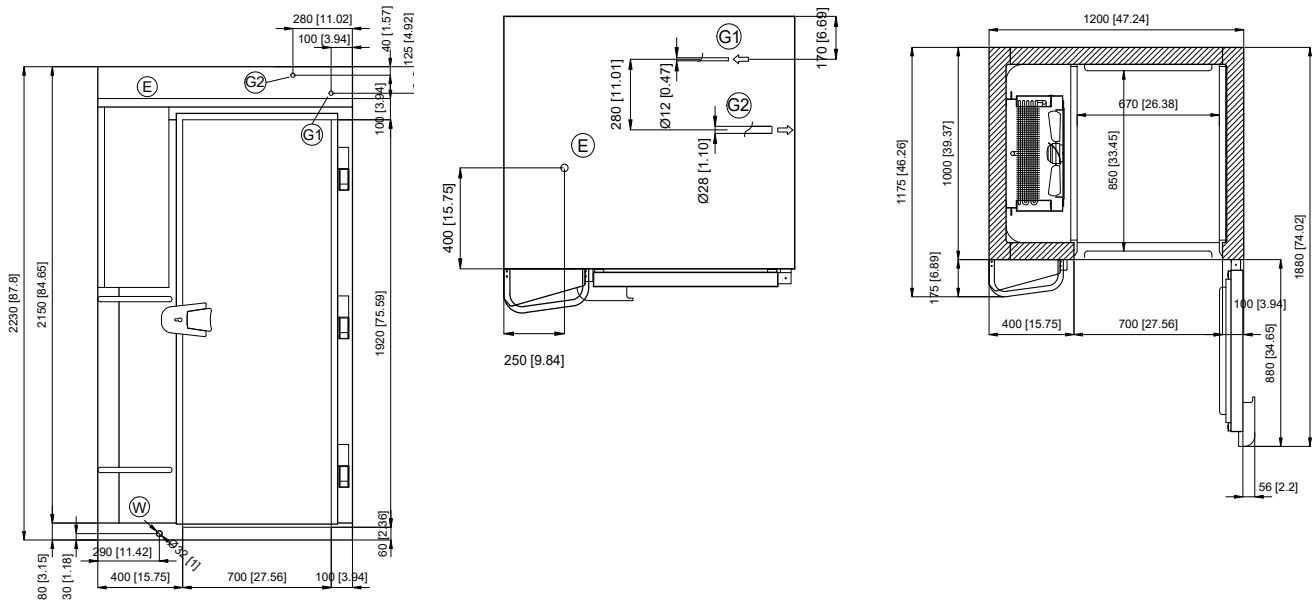
Rev. 7/1/24 Printed in U.S.A.

APPROVAL: \_\_\_\_\_ DATE: \_\_\_\_\_



# REMOTE BLAST CHILLER/SHOCK ROLL-IN FREEZER

## VBCF20-175P



We reserve the right to change specifications and product design without notice. Such revisions do not entitle the buyer to corresponding changes, improvements, additions or replacements for previously purchased equipment. Dimensional tolerances +/- .14". Metric dimensions (MM)

CHARACTERISTICS		REFRIGERATION DATA		SHIPPING DETAILS	
Width, Overall (in.)	47.24"	Condensing Unit Size, HP	N.A.	Height	92"
Depth, Overall (with handle) (in.)	46.26"	Refrigerant	R404	Width	51"
Height Overall (in.)	87.80"	Capacity (BTU/HR) (113°F/-13°F)	21,598	Depth	71"
Width, Door Open 90° (in.)	74.02"	Heat Rejection (W) (14°F/95°F)	N.A.	Crated Weight	962 lbs
Door Opening (in.)	27.56" x 75.59"	Refrigerant Amount (lbs)	N.A.	* Pans Not Included	
Wall Thickness (in)	3.94"	<b>PAN COUNT &amp; PERFORMANCE</b>			
Capacity Mobile Cart(s)	1 GN 1/1	Sheet Pan Capacity* (18" x 26") Or Steam Table Pan Capacity* (12" x 20")	20		
Doors	1	Chilling Capacity In 90 Min	175 lbs		
<b>ELECTRICAL DATA</b>		Freezing Capacity In 240 Min	115 lbs		
Cabinet Voltage	208-240/60/1	Climate Class	5		
Total Amperes	2.5				
NEMA Plug	N.A.				

3779 Champion Blvd, Winston-Salem, NC 27105 | ph: (888) 845-9800 | fax: (800) 253-5168

Sales@VictoryRefrigeration.com | VictoryRefrigeration.com

Rev. 7/1/24 Printed in U.S.A.

