



T&S BRASS AND BRONZE WORKS, INC.

2 Saddleback Cove / P.O. Box 1088
Travelers Rest, SC 29690

Model No.

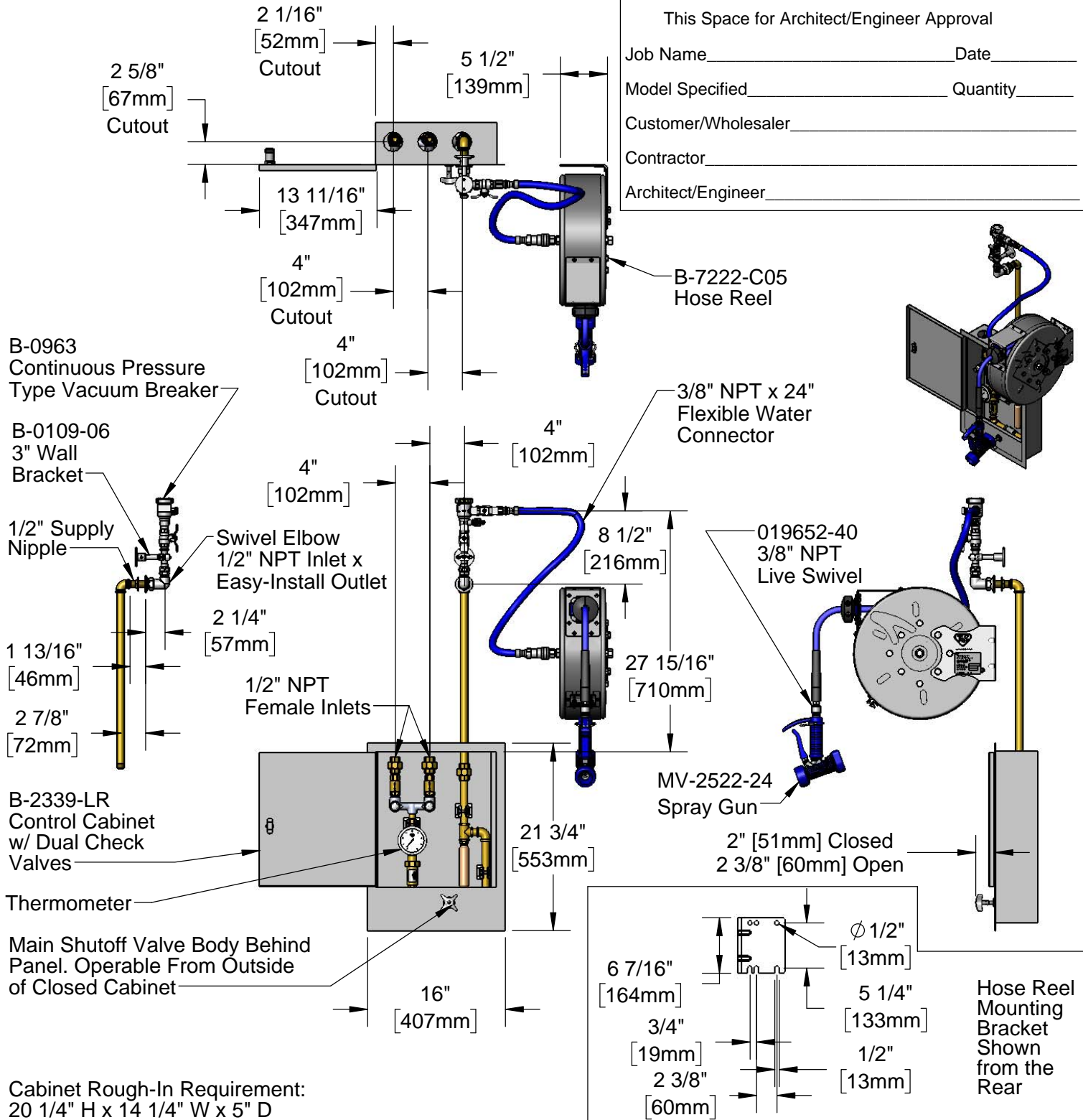
B-2339-02

Item No.

Travelers Rest, SC: 800-476-4103 • Simi Valley, CA: 800-423-0150 • Fax: 864-834-3518 • www.tsbrass.com

This Space for Architect/Engineer Approval

Job Name _____ Date _____
 Model Specified _____ Quantity _____
 Customer/Wholesaler _____
 Contractor _____
 Architect/Engineer _____



Cabinet Rough-In Requirement:
20 1/4" H x 14 1/4" W x 5" D

Product Specifications:
 Enclosed Hose Reel w/ 30' Hose, Front Trigger Water Gun w/ Swivel, Continuous Pressure Vacuum Breaker, Rinse Control Cabinet w/ Control valve, Dual Check Valves, Thermometer, Water Hammer Arrestor & 3" Wall Bracket

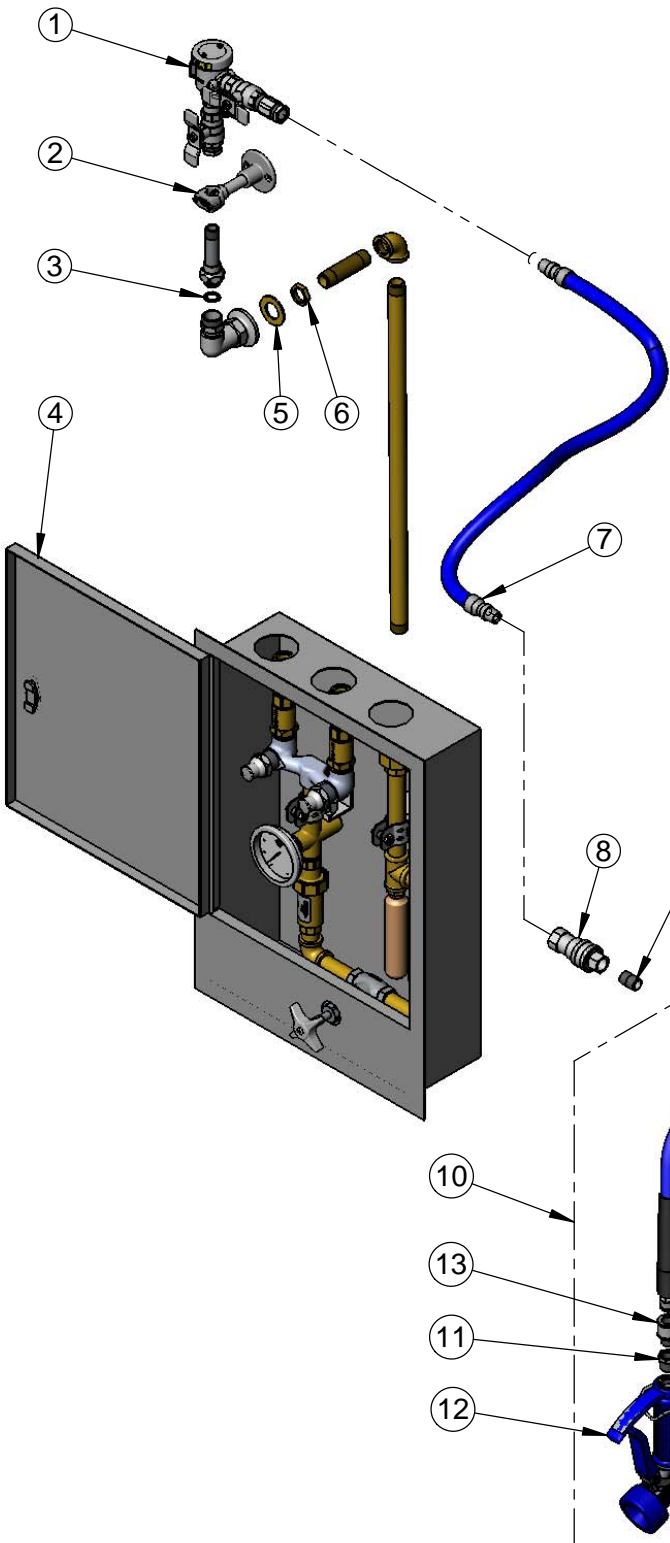
Product Compliance:
 ASME A112.18.1 / CSA B125.1
 NSF 61 Exempt (Non-Potable)
 EPA Act 2005 Non-Compliant (PRSV)
 ASSE 1056 (VB)



T&S BRASS AND BRONZE WORKS, INC.
 2 Saddleback Cove / P.O. Box 1088
 Travelers Rest, SC 29690

Model No.
B-2339-02
 Item No.

Travelers Rest, SC: 800-476-4103 • Simi Valley, CA: 800-423-0150 • Fax: 864-834-3518 • www.tsbrass.com



| ITEM NO. | SALES NO. | DESCRIPTION |
|----------|------------|--|
| 1 | B-0963 | 1/2" NPT Continuous Pressure VB w/ Integral Check Valve |
| 2 | B-0109-06 | 3" Wall Bracket |
| 3 | 014200-45 | Star Washer, Anti-Rotation |
| 4 | B-2339-LR | Reel Control Cabinet w/ Control valve, Dual Check Valves, Thermometer |
| 5 | 000999-45 | Brass Lock Washer |
| 6 | 002954-45 | Shank Lock Nut |
| 7 | HW-4B-24 | 3/8" NPT x 24" Flexible Water Hose |
| 8 | AW-5B | 3/8" NPT Quick Disconnect |
| 9 | 002535-25 | 3/8" Close Nipple |
| 10 | B-7222-C05 | Enclosed Epoxy Coated Steel Reel w/ 30' of 3/8" Hose & Front Trigger Gun |
| 11 | 001359-40 | Hex Bushing, 1/2" NPT Male x 3/8" NPT Female |
| 12 | MV-2522-24 | Front Trigger Gun, 5/16" Orifice |
| 13 | 019652-40 | 3/8" NPT Live Swivel |

Product Specifications:
 Enclosed Hose Reel w/ 30' Hose, Front Trigger Water Gun w/ Swivel, Continuous Pressure Vacuum Breaker, Rinse Control Cabinet w/ Control valve, Dual Check Valves, Thermometer, Water Hammer Arrestor & 3" Wall Bracket

Product Compliance:
 ASME A112.18.1 / CSA B125.1
 NSF 61 Exempt (Non-Potable)
 EPA Act 2005 Non-Compliant (PRSV)
 ASSE 1056 (VB)