



# T&S BRASS AND BRONZE WORKS, INC.

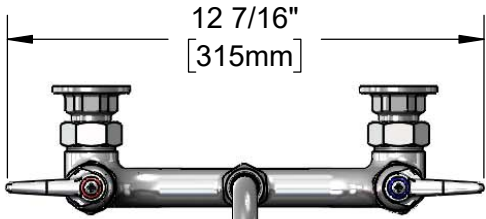
2 Saddleback Cove / P.O. Box 1088  
Travelers Rest, SC 29690

Model No.

**B-0267-BST**

Item No.

Travelers Rest, SC: 800-476-4103 • Simi Valley, CA: 800-423-0150 • Fax: 864-834-3518 • www.tsbrass.com



This Space for Architect/Engineer Approval

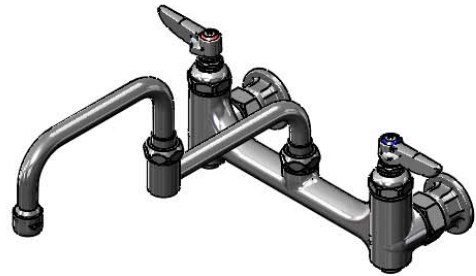
Job Name \_\_\_\_\_ Date \_\_\_\_\_

Model Specified \_\_\_\_\_ Quantity \_\_\_\_\_

Customer/Wholesaler \_\_\_\_\_

Contractor \_\_\_\_\_

Architect/Engineer \_\_\_\_\_



Eterna Cartridges & Lever Handles w/ Color Coded Indexes

066X  
12" Double Joint Swing  
Nozzle w/ Stream  
Regulator Outlet

Swivel Joint

3 13/16"  
[98mm]

8"

Adjustable From  
7 3/4" to 8 1/4"  
[197mm to 210mm]

7 9/16"  
[191mm]

4 5/16"  
[110mm]

2 7/8"  
[72mm]

Mounting Surface

2 5/8"  
[67mm]

12"  
[305mm]

6"  
[153mm]

Swivel Joint

Ø 2" [51mm]  
Flanges w/  
1/2" NPT  
Female Inlets

### Product Specifications:

8" Wall Mount Mixing Faucet, Eterna Cartridges, Lever Handles, Built-In Service Stops, 12" Double Joint Swing Nozzle & 1/2" NPT Female Inlets

### Product Compliance:

ASME A112.18.1 / CSA B125.1  
NSF 61 - Section 9  
NSF 372 (Low Lead Content)  
ANSI A117.1 (ADA)

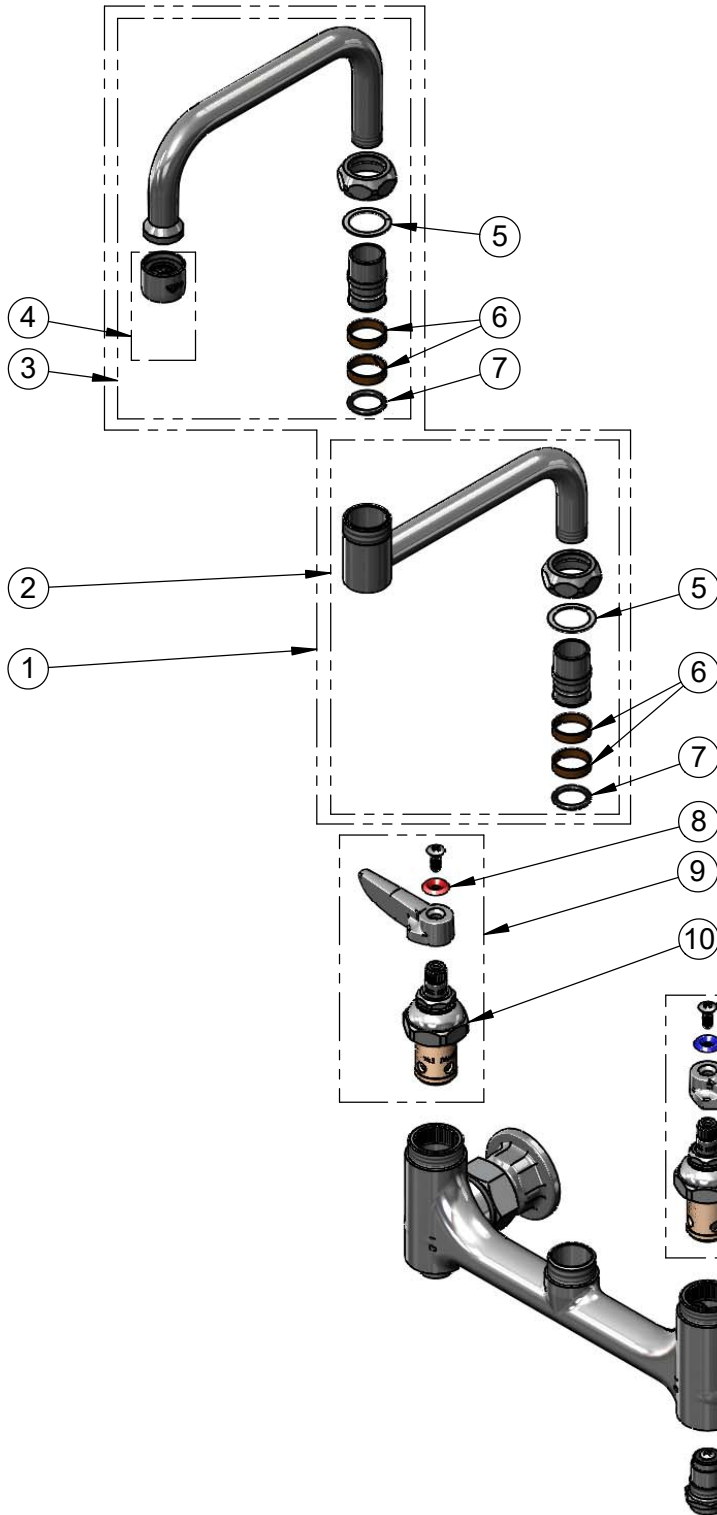


**T&S BRASS AND BRONZE WORKS, INC.**  
 2 Saddleback Cove / P.O. Box 1088  
 Travelers Rest, SC 29690

Model No.  
**B-0267-BST**

Item No.

Travelers Rest, SC: 800-476-4103 • Simi Valley, CA: 800-423-0150 • Fax: 864-834-3518 • www.tsbrass.com



| ITEM NO. | SALES NO. | DESCRIPTION  |
|----------|-----------|--|
| 1        | 066X      | 12" Double Joint Swing Nozzle w/ Stream Regulator Outlet |
| 2        | 151X      | 12" Double Joint Swing Nozzle, 6" Back Section           |
| 3        | 153X      | 12" Double Joint Swing Nozzle, 6" Front Section          |
| 4        | B-PT      | Stream Regulator Outlet                                  |
| 5        | 009538-45 | Swivel Washer  |
| 6        | 011429-45 | Swivel Sleeves (2)                                       |
| 7        | 001074-45 | O-Ring   |
| 8        | 001661-45 | Red Index-HW   |
| 9        | 002714-40 | Eterna Cartridge, RTC w/ Handle, Index & Screw           |
| 10       | 005960-40 | Eterna Cartridge, RTC                                    |
| 11       | 000922-45 | Lever Handle Screw                                       |
| 12       | 001660-45 | Blue Index-CW  |
| 13       | 001638-45 | Lever Handle   |
| 14       | 002713-40 | Eterna Cartridge, LTC w/ Handle, Index & Screw           |
| 15       | 00AA      | 1/2" NPT Female Eccentric Flange                         |
| 16       | 001019-45 | Coupling Nut Washer                                      |
| 17       | 005959-40 | Eterna Cartridge, LTC                                    |
| 18       | 166A      | Service Stop Spindle w/ Cap, Handle & Screw              |

Product Specifications:  
**8" Wall Mount Mixing Faucet, Eterna Cartridges, Lever Handles, Built-In Service Stops, 12" Double Joint Swing Nozzle & 1/2" NPT Female Inlets**

Product Compliance:  
 ASME A112.18.1 / CSA B125.1  
 NSF 61 - Section 9  
 NSF 372 (Low Lead Content)  
 ANSI A117.1 (ADA)