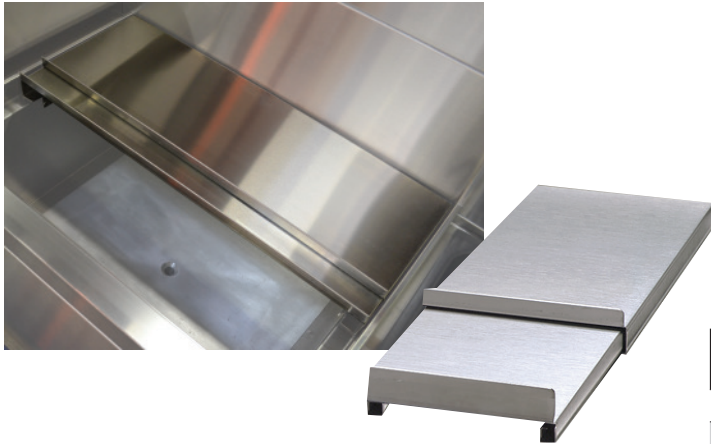




# PRESTIGE *Signature Series*

## Stainless Steel Ice Bin Covers

### For PRI-19 & PRI-24 Series Ice Bins



Item #: \_\_\_\_\_ Qty #: \_\_\_\_\_

Model #: \_\_\_\_\_

Project #: \_\_\_\_\_

**NOTE: All Bottle Racks Must Be Removed To Use Ice Bin Covers**

**FEATURES:**

All stainless steel construction.  
Easy to open and close with front-to-back sliding motion.

**MATERIAL:**

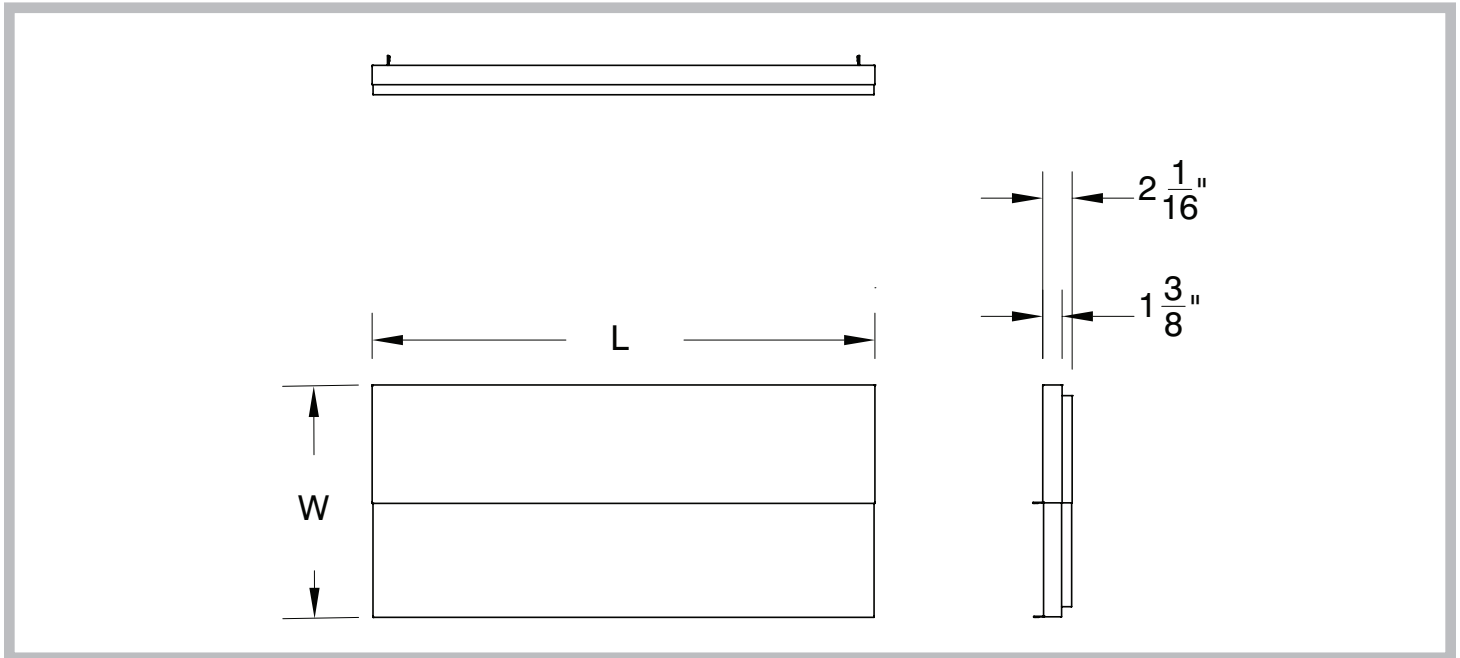
20 Gauge type 300 stainless steel

Model #	Size W x L	Description	Approx. Weight	Approx. Cu. Ft.
PRA-SSC-12	16-1/2" x 11-1/2"	Fits 12" Ice Bin	5 lbs.	1
PRA-SSC-18	16-1/2" x 17-1/2"	Fits 18" Ice Bin	6 lbs.	1
PRA-SSC-24	16-1/2" x 23-1/2"	Fits 24" Ice Bin	7 lbs.	1
PRA-SSC-30	16-1/2" x 29-1/2"	Fits 30" Ice Bin	8 lbs.	1
PRA-SSC-36	16-1/2" x 35-1/2"	Fits 36" Ice Bin	9 lbs.	1
PRA-SSC-42	16-1/2" x 41-1/2"	Fits 42" Ice Bin	10 lbs.	2
PRA-SSC-48	16-1/2" x 47-1/2"	Fits 48" Ice Bin	11 lbs.	2
PRA-SSC-PT30	38-1/2" x 23-1/2"	Fits PRPT-2442, PRPT-2442-10, PR-44X42SP-10L or R, & PR-42X42-10L or R	12 lbs.	2
PRA-SSC-PT42	26-1/2" x 23-1/2"	Fits PR-44X30SP-10L or R and PR-42X30-10L or R	12 lbs.	2

## DETAILS and SPECIFICATIONS

TOL Overall: ± .500" Interior: ± .250"

ALL DIMENSIONS ARE TYPICAL



**Customer Service Available To Assist You 1-800-645-3166 8:30 am - 8:00 pm E.S.T.**

For Orders & Customer Service:  
Email: [customer@advancetabco.com](mailto:customer@advancetabco.com) or Fax: 631-242-6900

For Smart Fabrication™ Quotes:  
Email: [smartfab@advancetabco.com](mailto:smartfab@advancetabco.com) or Fax: 631-586-2933