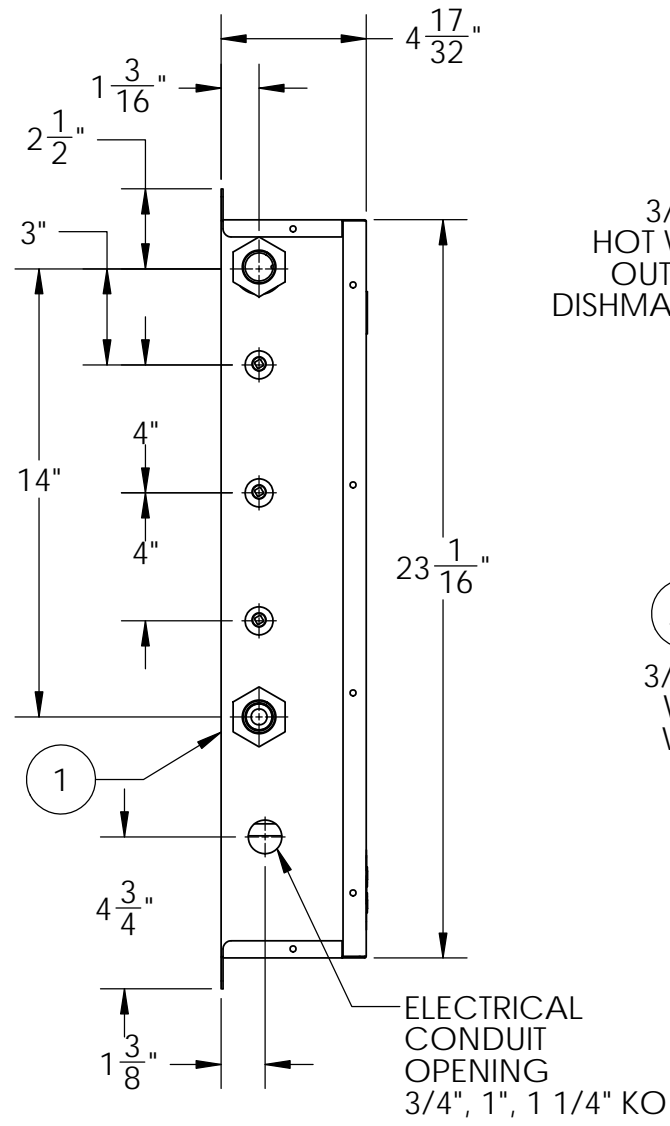


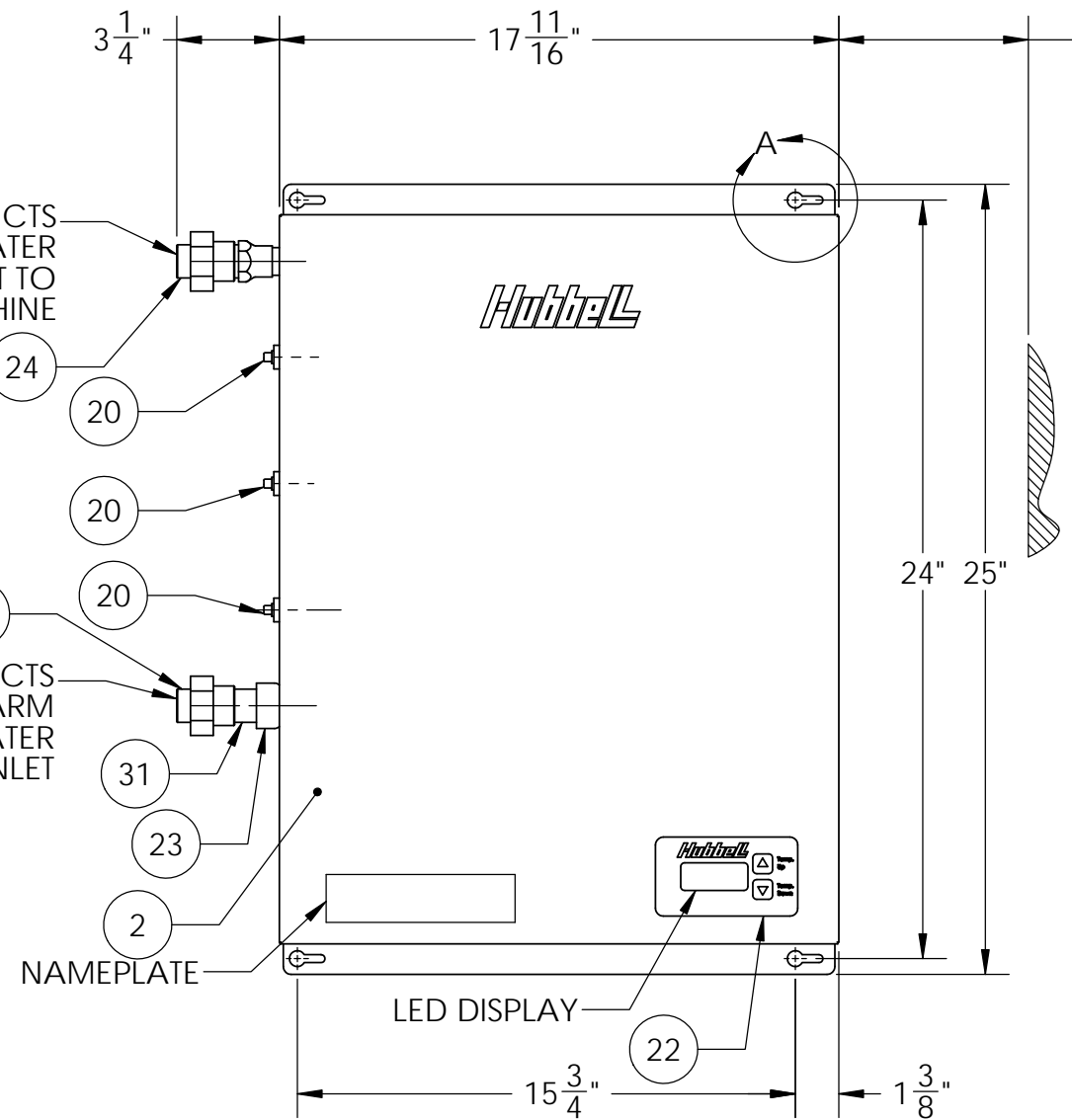
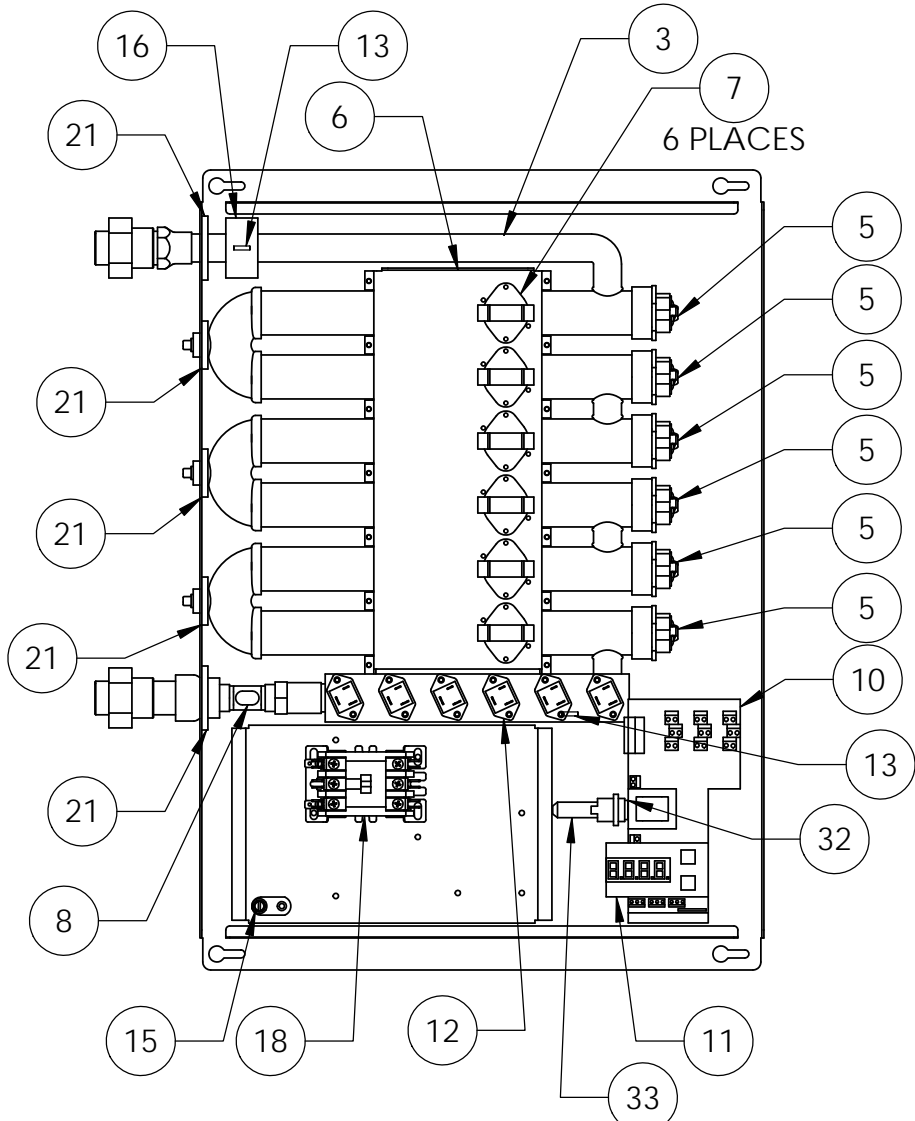
DETAIL A
SCALE 1 : 2



3/4" CTS
HOT WATER
OUTLET TO
DISHMACHINE

3/4" CTS
WARM
WATER
INLET

ELECTRICAL
CONDUIT
OPENING
3/4", 1", 1 1/4" KO



12" MIN. FOR
ELEMENT
WITHDRAWL

Hubbell

LED DISPLAY

NAMEPLATE

ZONE	REV.	DESCRIPTION	DATE	APPROVED
REVISIONS				

DATE	NAME	DESCRIPTION
01/19/11	PRD	Stratford, CT 06615 (203) 378-2659
01/19/11	SW	The Electric Heater Company
01/19/11	PRD	Customer:
01/19/11	WEN III	Description: TANKLESS ELECTRIC BOOSTER HEATER, 31 kW @ 208 V, 3Ph

PROPRIETARY AND CONFIDENTIAL THE INFORMATION CONTAINED IN THIS DRAWING IS THE SOLE PROPERTY OF THE ELECTRIC HEATER COMPANY. ANY REPRODUCTION IN PART OR AS A WHOLE WITHOUT THE WRITTEN PERMISSION OF THE ELECTRIC HEATER COMPANY IS PROHIBITED.	DIMENSIONS ARE IN INCHES TOLERANCES: (UNLESS OTHERWISE SPECIFIED) FRACTIONAL ±¼ ANGULAR: MACH ±½° BEND ±1° TWO PLACE DECIMAL ±0.01 THREE PLACE DECIMAL ±0.005		SIZE B	DWG. NO. JTX031-6R	REV
	SCALE: 1:1	FSCM: 19857	SHEET 1 OF 2		


ITEM NO.	QTY.	PART NO. / DWG. NO.	MATERIAL	DESCRIPTION
1	1	D-1111	STAINLESS STEEL	BACK CASING ASSEMBLY
2	1	D-1110	STAINLESS STEEL	FRONT COVER
3	1	JTK6-FM	COPPER / BRASS	HEATER TUBE ASSEMBLY
4	--	--	--	--
5	6	N1315-7000	INCOLOY / BRASS	HEATING ELEMENT, 7000/5166W @ 240/208V
6	1	D-1114	ALUMINUM	TOP HEATER TUBE SUPPORT
7	6	L93	VARIOUS	HI-LIMIT SWITCH, AUTO RESET (SET TO 200°F)
8	1	TK FLOW BR	BRASS	FLOW METER, 0.2-8 GPM
9	--	--	--	--
10	1	TK2250	VARIOUS	ELECTRONIC TEMPERATURE CONTROLLER
11	1	TKD2000	VARIOUS	LED DISPLAY
12	6	TG40E60	VARIOUS	TRIAC
13	2	USP9509	VARIOUS	THERMISTOR
14	AS REQ'D		COPPER	WIRE: POWER: #10 AWG, CONTROL: #18 AWG, THHN (90°C)
15	1	KA-4C	COPPER	GROUND LUG
16	1		POLYURETHANE	THERMISTOR INSULATION
17	--	--	--	--
18	1	C25FNF375B	VARIOUS	MAGNETIC CONTACTOR, 208/240 VAC COIL, 90A RESISTIVE
19	--	--	--	--
20	3	PLUGBR 1/8	BRASS	DRAIN PLUG, 1/8" NPT
21	5		RUBBER	INLET / OUTLET / DRAIN CASING GASKETS
22	1	TANKLESS OVERLAY	LEXAN	DISPLAY OVERLAY
23	1	COUPBELL 1/2" TO 3/4"	BRASS	INLET BELL COUPLING, 1/2" x 3/4"
24	1	DIELECTRIC UNION	VARIOUS	DIELECTRIC UNION, 3/4" FNPT x 3/4" CTS
25	--	--	--	--
26	1		STAINLESS STEEL	INLET SCREEN (NOT SHOWN)
27				
28				
29	1		VARIOUS	LEAK DETECTION WIRE
30	AS REQ'D		RUBBER	GASKET MATERIAL (NOT SHOWN)
31	1	NIPPBR 3/4 X 1.5	BRASS	NIPPLE 3/4" x 1 1/2" LONG
32	1	LGR-3	VARIOUS	CONTROL CIRCUIT FUSE, 3A
33	1	LHR000	VARIOUS	FUSE HOLDER

- GENERAL NOTES:
- HEATING CHAMBER IS RATED FOR 150 PSI WATER PRESSURE (MAX.)
 - UNIT IS UL, cUL, AND UL EPH LISTED.
 - JTX FLOW RATE: 0.2 GPM MIN., 8 GPM MAX.
 - APPROXIMATE WEIGHT IS 18 POUNDS.
 - HEATERS ARE FULLY MODULATING FROM 0 TO 100%.
 - UNIT IS DESIGNED FOR 50/60 Hz.

INSTALLATION PARAMETERS	
VOLTS	208 V
POWER	31 kW
AMP	86.0 A
BREAKER SIZE(MIN)	90 A
FEED WIRE SIZE(MIN)	#3 AWG
CONDUIT SIZE(MIN)	1"
WIRING DIAGRAM	7

- INSTALLATION NOTES:
- TANKLESS WATER HEATERS ARE CONSIDERED A NON-CONTINUOUS LOAD.
 - IF MULTIPLE FEED INSTALLATION IS USED, IT IS ACCEPTABLE TO INSTALL UP TO TWO CONDUCTORS IN ONE LINE SIDE PORT. ADDITIONALLY, WHEN A POWER DISTRIBUTION BLOCK IS SUPPLIED, ADDITIONAL CONDUCTORS MAY BE INSTALLED IN AN OPEN LOAD SIDE PORT OF THE POWER DISTRIBUTION BLOCK.
 - WIRING SIZING LISTED IS FOR 75°C THHN. 60°C OR 90°C WIRE MAY BE USED. REFER TO NEC TABLE 310.16 FOR SIZING.
 - CONDUCTORS SHOULD BE SIZED TO MAINTAIN A VOLTAGE DROP OF LESS THAN 3% UNDER LOAD.

ZONE	REV.	DESCRIPTION	DATE	APPROVED

DATE	NAME	 The Electric Heater Company Stratford, CT 06615 (203) 378-2659	
DRAWN	11/17/10		PRD
CHECKED	11/22/10		SW
ENG APPR.	11/22/10		PRD
MFG APPR.	11/22/10		WEN III

Customer:		Description: TANKLESS ELECTRIC BOOSTER HEATER, 31 kW @ 208 V, 3Ph	
SIZE	DWG. NO.	REV	
B	JTX031-6R		
SCALE: 1:1	FSCM: 19857	SHEET 2 OF 2	

PROPRIETARY AND CONFIDENTIAL
 THE INFORMATION CONTAINED IN THIS DRAWING IS THE SOLE PROPERTY OF THE ELECTRIC HEATER COMPANY. ANY REPRODUCTION IN PART OR AS A WHOLE WITHOUT THE WRITTEN PERMISSION OF THE ELECTRIC HEATER COMPANY IS PROHIBITED.

DIMENSIONS ARE IN INCHES
 TOLERANCES:
 (UNLESS OTHERWISE SPECIFIED)
 FRACTIONAL ±¼
 ANGULAR: MACH ±½° BEND ±1°
 TWO PLACE DECIMAL ±0.01
 THREE PLACE DECIMAL ±0.005

D

D

C

C

B

B

A

A