

# Fusion

GHS 56"H Refrigerated Service Case w/ Flat Glass

**Structural Concepts®**

DELIVERING FRESH. ALWAYS.™

- **GHS456RLB** 51"L x 42-3/4"D x 55-1/4"H
- **GHS556RLB** 62-7/8"L x 42-3/4"D x 55-1/4"H
- **GHS656RLB** 75-3/8"L x 42-3/4"D x 55-1/4"H
- **GHS856RLB** 99-3/4"L x 42-3/4"D x 55-1/4"H
- **GHS1056RLB** 123-3/8"L x 42-3/4"D x 55-1/4"H
- **GHS1256RLB** 148-1/2"L x 42-3/4"D x 55-1/4"H

## Included

- Flat angled lift-up front glass
- LED top & shelf lights
- One year parts & labor warranty
- Remote DX refrigeration
- Stainless steel rear exterior
- Warmest average product temperature of 40°F or less



**GHS456RLB**

Specify	Standard Features	Additional Options
<b>EXTERIOR COLOR</b>	• Laminate (stock colors)	• Laminate (non-stock colors) • Powder coated (stock/non-stock colors) • Powder coated Silversan Black • Stainless steel
<b>INTERIOR COLOR</b>	• Powder coated Silversan Black	• Stainless steel
<b>LOWER FRONT PANEL COLOR</b>	• Powder coated Silversan Black	• Powder coated (stock/non-stock colors) • Stainless steel
<b>BASE SUPPORT</b>	• Rail system for shims	
<b>BUMPER FRONT</b>	• 1" Boston bumper (specify color)	• 1" Stainless steel plate rail bumper
<b>END PANELS</b>	• Full w/stainless steel mirror interior	• Cutaway w/glass • None (specify per line-up)
<b>SCALE STAND</b>	• None	• Scale stand w/ receptacle & CAT5 (specify location) • Scale stand w/ receptacle (specify location)
<b>PRICE TAG MOLDING</b>	• None	• 1" Price tag molding (black or silver) • Universal price tag molding (clear w/ open top)
<b>REAR DOORS</b>	• Clear glass rear sliding doors	• Reflective glass rear sliding doors
<b>SHELVING</b>	• 8" & 14" & 16" Solid shelving	• 8" & 12" & 16" & 16" Glass shelving • 8" & 12" & 16" & 16" Solid shelving • 8" & 14" & 16" Glass shelving
<b>LIGHTS</b>	• LED 3500K w/ frosted lens	• LED 4000K w/ frosted lens
<b>ELECTRICAL CONNECTION</b>	• Electrical leads (remote)	
<b>REFRIGERATION</b>	• Remote DX refrigeration	• Remote w/thermostat, solenoid & TXV
<b>SENSOR</b>	• None	• CPC discharge air sensor (remote)
<b>MISCELLANEOUS</b>		• Front glass lock • Rear door lock
<b>ACCESSORIES</b>		• Drain strainer

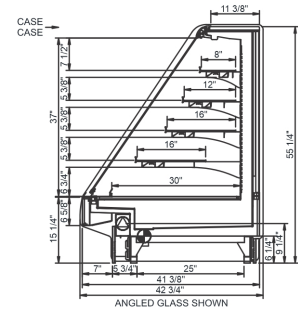
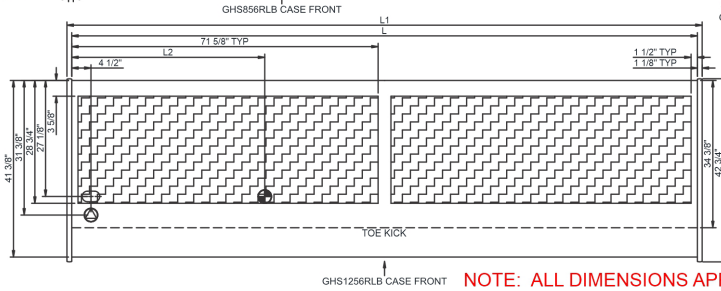
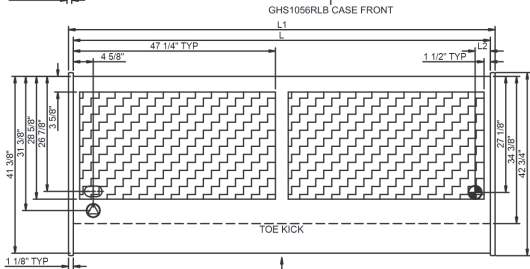
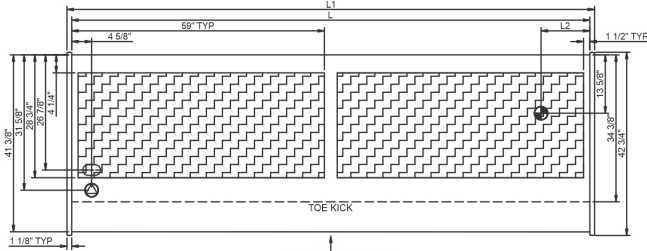
Option Notes: 1 - Separate circuit required

**Intended Environment:** Type I - Designed to operate in ambient conditions of 75°F with 55% relative humidity unless noted otherwise in system information below.

Zone	Intended Product To Be Displayed	Warmest Avg Prod Temp ° F
1	Unpackaged refrigerated products	40

### PLAN VIEW

### SIDE VIEW



**NOTE: ALL DIMENSIONS APPROXIMATE**

- ELECTRICAL JUNCTION BOX (SUPPLIED WITH 6" LEADS OR POWER CORD).
- REFRIGERATION LINE CONNECTION.
- SELF-CONTAINED CASE SERVICE ACCESS AREA.
- LOCATION OF DRAIN TUBE FOR REMOTE REF. ONLY (SUPPLIED WITH 3/4" OR 1 1/2" PVC TUBE).
- REMOTE FLOOR SINK & UTILITIES ACCESS AREA.
- DRY CASE SERVICE ACCESS AREA.

Model Technical Specifications																
Model	L"	L1"	L2"	System Circuit Volts			Phs	Freq	Amps ***	Watts	Wires	NEMA Plug	SST	Conv. Rack BTUH	Para. Rack BTUH	Est Wt
				Remote (DX)	Circuit #1	110-120										
GHS456RLB	48.75	51.00	3.63	Remote (DX)	Circuit #1	110-120	1	60	2.66	251	2+G	Leads Multiple	20.00	1793	1660	925
GHS556RLB	60.63	62.88	3.63	Remote (DX)	Circuit #1	110-120	1	60	2.92	149	2+G	Leads Multiple	20.00	2138	1980	1,000
GHS656RLB	73.13	75.38	3.63	Remote (DX)	Circuit #1	110-120	1	60	3.66	156	2+G	Leads Multiple	20.00	2722	2520	1,050
				Remote (GLYCOL 35%)	Circuit #1	110-120	1	60	3.66	156	2+G	Leads Multiple	20.00	2722	2520	
GHS856RLB	97.50	99.75	3.63	Remote (DX)	Circuit #1	110-120	1	60	4.47	197	2+G	Leads Multiple	20.00	3456	3200	1,400
				Remote (GLYCOL 35%)	Circuit #1	110-120	1	60	3.06	182	2+G	Leads Multiple	20.00	3348	3100	
GHS1056RLB	121.13	123.38	11.38	Remote (DX)	Circuit #1	110-120	1	60	5.84	267	2+G	Leads Multiple	20.00	4234	3920	1,500
GHS1256RLB	146.25	148.50	45.13	Remote (DX)	Circuit #1	110-120	1	60	5.65	296	2+G	Leads Multiple	20.00	5011	4640	1,500
				Remote (GLYCOL 35%)	Circuit #1	110-120	1	60	6.38	549	2+G	Leads Multiple	20.00	5011	4640	

\*\*\* Does not include electric defrost on freezer models.

#### Regulatory Approvals:

All Models  
 Accordance with AHRI Std 1200  
 ETL Listed to UL 471  
 ETL Listed to CAN/CSA 22.2 No. 120  
 ETL Sanitation to NSF/ANSI 7



In Accordance with  
**AHRI Std 1200**

**DOE 2017**  
 Energy Efficiency  
 Compliant

#### Important Notes:

- 1) ELECTRICAL NOTE: If GFCI is required, a GFCI breaker MUST be used in lieu of a GFCI receptacle.
- 2) 45" minimum door entry clearance required (without shipping skid).
- 3) Units must be shimmed during installation to ensure the unit is level and plumb.

**⚠ WARNING:** This product can expose you to chemicals, including Urethane (Ethyl Carbamate), which are known to the State of California to cause cancer and birth defects or other reproductive harm. For more information go to [www.P65Warnings.ca.gov](http://www.P65Warnings.ca.gov).