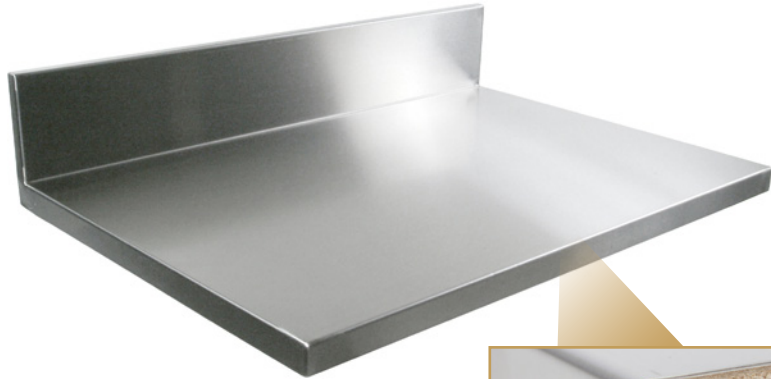


"KCT-BS" KITCHEN COUNTERTOPS *Stainless Steel - With 6" Boxed Backsplash*

FEATURES:

- Heavy Duty 16GA Thickness
- High Nickel Content Type 300 Stainless Steel, #4 Polish
- 1/4" Radius All Top Edges & Vertical Corners
- Straight Runs Only, No Miter Or Special Edges
- Sink or Stove Cutout, Call For More Information
- Max Length 144", Max Depth 54"
- 6" Integral Backsplash (7-1/2" OAH)
- Underlayment: 1-3/8" Thick Particle Board w/Melamine Backing



CERTIFICATIONS:



"KCT-BS" KITCHEN COUNTERTOPS - STAINLESS STEEL

LENGTH	25" WIDE	WT	30" WIDE	WT
12"	KCT-BS1225	19	KCT-BS1230	23
18"	KCT-BS1825	28	KCT-BS1830	33
24"	KCT-BS2425	37	KCT-BS2430	44
36"	KCT-BS3625	55	KCT-BS3630	65
48"	KCT-BS4825	73	KCT-BS4830	86
60"	KCT-BS6025	91	KCT-BS6030	107
72"	KCT-BS7225	108	KCT-BS7230	128
84"	KCT-BS8425	126	KCT-BS8430	149
96"	KCT-BS9625	144	KCT-BS9630	171
108"	KCT-BS10825	162	KCT-BS10830	192
120"	KCT-BS12025	180	KCT-BS12030	213
132"	KCT-BS13225	198	KCT-BS13230	234
144"	KCT-BS14425	215	KCT-BS14430	255

ALL DIMENSIONS ARE TYPICAL. TOLERANCE +/- .125". JOHN BOOS & CO. RESERVES THE RIGHT TO CHANGE SPECIFICATIONS WITHOUT NOTICE.