



UNDERBAR TRASH MODULE



TSF12BTB shown



TS12TRA shown

JOB	
AREA	
ITEM NO.	
MODEL NO.	

MODELS
TSF12BTB
TS12TRA

MODEL NUMBERS - TSF12BTB, TS12TRA

KEY PRODUCT FEATURES AND BENEFITS

- Perlick trash housings are designed to fit the standard slim container up to 30" high
- Unit are designed to attach to adjoining equipment and can have an accessory leg panel on one side
- Perlick's door version is designed for easy removal of the trash can without removing the door
- Designed to integrate into your design and keep a clean aesthetic

Quick Features:

- Effectively hides trash containers to keep your bar appearance clean
- Stainless steel for corrosion resistance
- Designed for easy cleaning

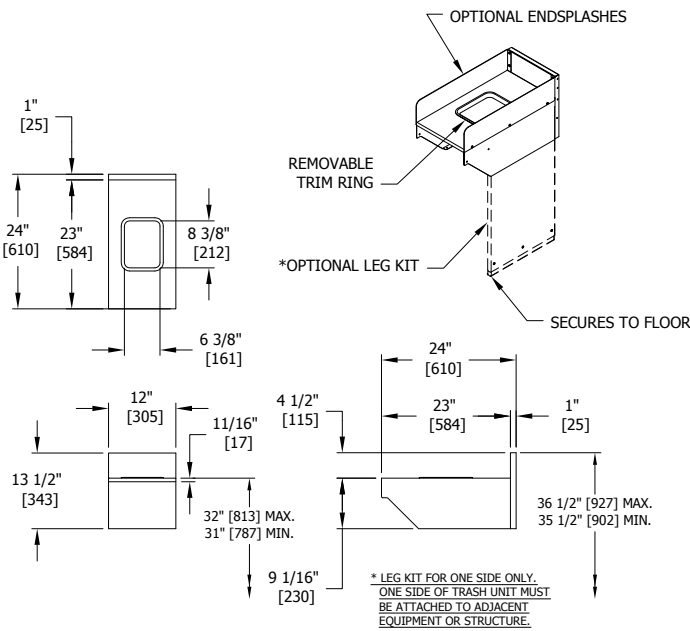


UNDERBAR TRASH MODULE

MODEL NOS.	TSF12BTB	TS12TRA
DIMENSIONS: EXTERIOR (mm)	Length	12" (305)
	Width	24" (610)
	Ship Weight (lbs)	25 (11)
GENERAL PARTS	General Parts	Stainless steel
	Backsplash	6" high (4" high optional)
	Wastebasket Accessories	Wastebasket (11" L x 20" W x 30" H - recommend CSF Brands model 34202323)
ACCESSORIES	TSF12BTB	End panel (BRG-PL), End splash (BRG-ES)
	TS12TRA	Panel leg (TRA-PL)

Note: Requires support by adjacent underbar equipment or accessory end panel and leg kit.

TSF12BTB



TS12TRA

