



# KNOCK DOWN PROOFER



**Knock Down Proofer Cabinet, Roll-In, Three-Section, Capacity (3) Double Side Load, (4) Single End Load Rack or (6) Single Side Loaf Racks, (2) Doors with Digital Touchscreen Control, Single Water Line, Auto Fill Humidity, Insulated Panels, Stainless Steel Construction, Expandable, Shipped Knocked Down, ETL, NSF**



PROJECT \_\_\_\_\_

ITEM NO. \_\_\_\_\_

NOTES \_\_\_\_\_

MODEL NUMBER:

**KDP31, KDP32, KDP33**

**FEATURES**

- Digital Touchscreen Control with Programmable Recipes
- Even Airflow Heating System Maintains the Right Combination of Heat and Humidity for Optimal Proofing
- Proofs from Room Temperature up to 110°F (43°C)
- Relative Humidity up to 95%
- Automatic Water Fill System (no water pans required)

**CONSTRUCTION**

- Stainless Steel Construction
- Single Water Line Connection
- Ships Knock Down

**CLEARANCES**

Minimum Clearance from Combustible Materials:

- 4" (102mm) Sides & Back
- 24" (609mm) Top

**OPTIONS & ACCESSORIES**

- Water Filter (50-1530) (recommended)
- Pass-Through Configuration (Suffix PT) (please note single control panel only on front, and door hinged same side)
- Factory Installation & Startup
- Factory Startup (Installation not Included)
- Stainless Steel Floor with Drain\*

**WARRANTY**

- One Year Labor & Two Year Parts



\*racks not included



\*CONTACT FACTORY TO VERIFY IF FLOOR IS REQUIRED FOR USE WITH UNIT

Model	Crated Weight	# of Humidifiers	Overall Dimensions		
			W	D	H
KDP31		2	107" (2717)	47 3/8" (1203)	101" (2565)
KDP32		3	107" (2717)	87 3/8" (1203)	101" (2565)
KDP33		3	107" (2717)	127 3/8" (3235)	101" (2565)





PROJECT \_\_\_\_\_

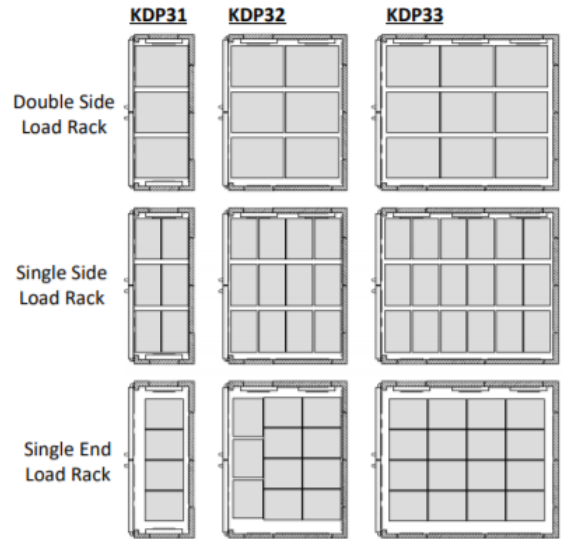
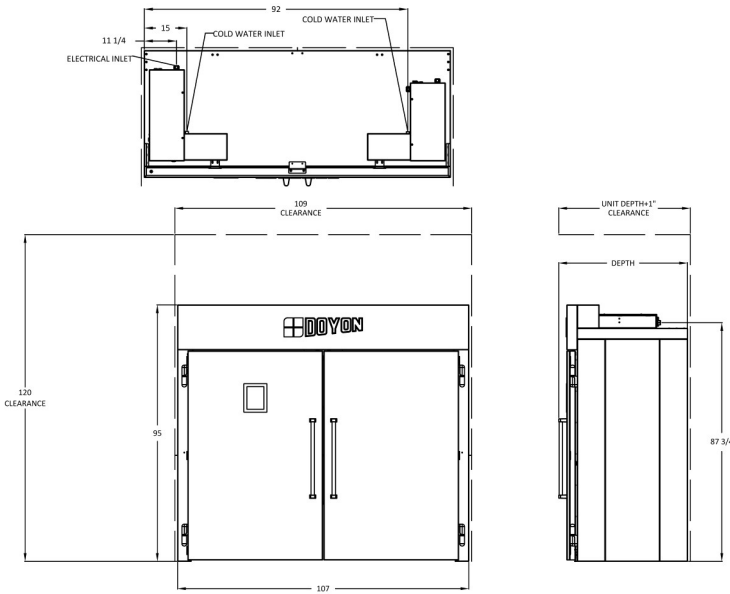
ITEM NO. \_\_\_\_\_

NOTES \_\_\_\_\_

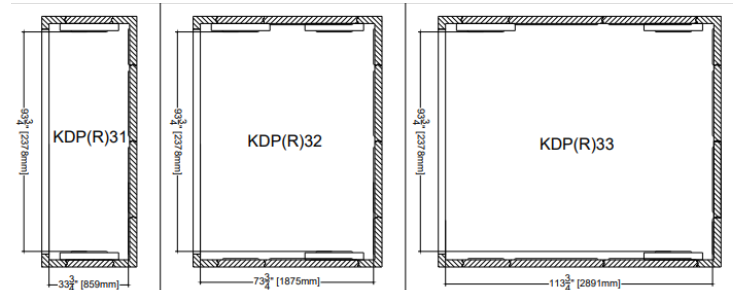
MODEL NUMBER: \_\_\_\_\_

## KDP31, KDP32, KDP33

### DRAWINGS



### KDP(R) SERIES INTERNAL DIMENSIONS



### INSTALLATION NOTES & REQUIREMENTS

**WATER LINE:** 1/4" TUBE Cold Water Line Connection Required with 15-25 PSI.

**FLOOR:** Unit should be installed on level surface within 1/8" per foot for proper installation. Slope should not exceed 3/4" in all directions under the unit. Unit must be installed on a non-combustible material floor with a cleanable surface.

**DRAIN:** Drain not included.

**CLEARANCES:** 10' ceiling height required for proper airflow and service access. 1" clearance between proofer and oven recommended to ensure proper proofer operation.

Model	Water Inlet	Electrical System				
		Volts	Phases	Amps	kW	Hertz
KDP31	1/4" (6) TUBE	208	1	48	10	60
	15-25 PSI*	240	1	42	10	60
KDP32	1/4" (6) TUBE	208/240	1	72/63	15	60
	15-25 PSI*	208/240	3	42/36	15	60
KDP33	1/4" (6) TUBE	208/240	1	72/63	15	60
	15-25 PSI*	208/240	3	42/36	15	60

\*PRESSURE REGULATOR NOT INCLUDED \*GROUND WIRE NOT INCLUDED

SPECIFICATIONS SUBJECT TO CHANGE WITHOUT NOTICE

KCL & REVIT DRAWINGS UPON REQUEST

REVISION C | 12/12/23

Follow Us



Doyon

5600 13th Street, Menominee, MI 49858

906.863.4401 | 800.338.9886 | www.doyonbaking.com