

Self-Leveling Dispensers

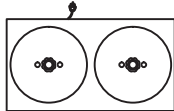
"Hi-Heat"

for Stainless Steel Underliners & Bases

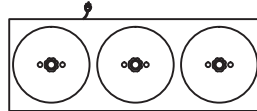


Will heat to 200°F in 90 minutes and 225°F in 2 hours. Highly efficient with Therma-Lock hospital tray service model TL-95 and all other makes

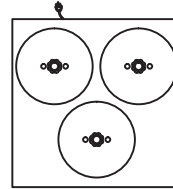
Specify the make of underliner or base to be used.



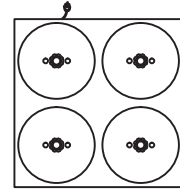
CM-S-302-HH
CM-S-402-HH



CM-S-303-HH
CM-S-403-HH



CM-SQ-303-HH



CM-S-304-HH

Dimensions				
Model	Base Dia. (qty)	Length	Width	Height
CM-S-302-HH	Up to 9 ¹ / ₄ " (72*)	29 ¹ / ₄ "	16"	35 ¹ / ₄ " **
CM-S-303-HH	Up to 9 ¹ / ₄ " (108*)	44"	16"	35 ¹ / ₄ " **
CM-SQ-303-HH	Up to 9 ¹ / ₄ " (108*)	29 ¹ / ₄ "	29 ¹ / ₄ "	35 ¹ / ₄ " **
CM-S-304-HH	Up to 9 ¹ / ₄ " (144*)	29 ¹ / ₄ "	29 ¹ / ₄ "	35 ¹ / ₄ " **
CM-S-402-HH	9 ¹ / ₂ " to 10 ¹ / ₈ " (72*)	29 ¹ / ₄ "	16"	35 ¹ / ₄ " **
CM-S-403-HH	9 ¹ / ₂ " to 10 ¹ / ₈ " (108*)	44"	16"	35 ¹ / ₄ " **

* Actual capacities vary with shape of object to be dispensed.

** Height excludes dome covers. Add 5-1/2" to overall height for dome covers.

* * * * *

Caddy base heaters are designed to heat Caddy TL-95 underliners. Underliners manufactured by others should be sent to factory to be tested for proper operation.

* * * * *

General Specifications

Caddy Magic Hi-Heat self-leveling dispenser to be Caddy Corporation model CM-_____.

Unit to have 16 gauge stainless steel top with 2" turned down channel edges on 4 sides and welded finished corners. Exterior of cabinet to be finished in stainless steel.

Self-leveling cylinders to be field adjustable without the use of tools for stainless steel underliners and bases without requiring prior identification, irrespective of weight, height, or brand. Calibrating mechanism to have multiple extension springs peripherally suspended from a circular storage bank. Selective engaging of springs with carrier assembly to permit balancing and dispensing of any load within range of model selected. Cylinders to have 18 gauge stainless steel raised top flange, in high luster finish.

Each dispenser to be enclosed in full height 1" thick insulation and to have an aluminum dome cover with knob. Dispenser flange to be isolated from cabinet top by a thermal breaker, preventing metal contact between dispenser and cabinet.

Bottom of cabinet to be 12 gauge stainless steel, rust resistant metal. Body to have full height vertical plastic corner bumpers. Casters are to be 5" diameter swivel type with polyurethane tires. Two casters on diagonal corners to be provided with foot brakes.

Each cylinder to have individual Hi-Limit thermostat and timer wired to hi-intensity sheathed heating elements of a minimum of 950 watts. Electrical control box to be stainless steel and installed for easy removal for service. Control box to be furnished with a timer to be adjustable to reach maximum temperature within 120 minutes and a recessed male three-pronged NEMA twist-lock receptacle. Unit to be supplied with a 6'-0" long cord with a NEMA twist-lock female connector at one end and a three prong male plug at the other end.

Unit to be provided with the following accessories:

Accessories

- ACC-50 - Perimeter bumpers with replaceable corner bumpers. (Add 1-1/4" to length and width)
- ACC-52 - Vertical corner bumpers only. Easy to replace. (Add 1-1/4" to length and width)
- ACC-53 - Vacuum Lifter for underliners.

CADDY CORPORATION
 509 Sharptown Road P.O. Box 345
 Bridgeport, NJ 08014-0345
 Tel: 856-467-4222 Fax: 856-467-5511
 internet: www.caddycorp.com

CADDY Food Service Systems

ITEM NO:

page 2 of 2

Self-Leveling Dispensers

"Hi-Heat"

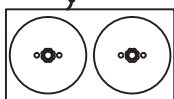
for Stainless Steel Underliners & Bases



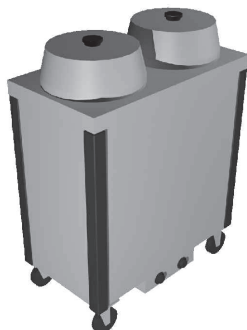
PROJECT:

LOCATION:

TOP VIEW

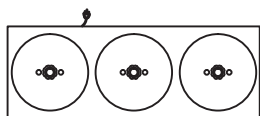


CM-S-302-HH
CM-S-402-HH

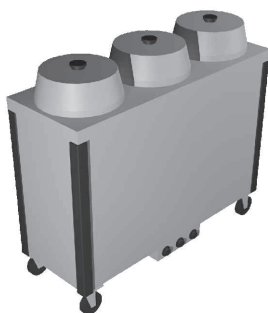


Model	Electrical Data				NEMA	
	Volts	Phase	Amps	Watts	Plug	Outlet *
CM-S-302-HH CM-S-402-HH	120	1	15.8	1900	5-20P	5-20R
	208	1	9.1	1900	6-20P	6-20R
	240	1	7.9	1900	6-20P	6-20R

* Outlet not supplied by Caddy Corporation.

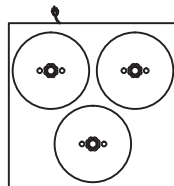


CM-S-303-HH
CM-S-403-HH

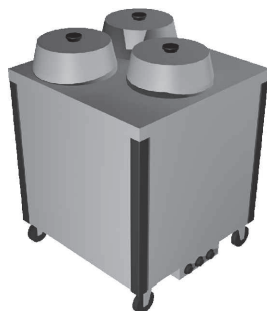


Model	Electrical Data				NEMA	
	Volts	Phase	Amps	Watts	Plug	Outlet *
CM-S-303-HH CM-S-403-HH	120	1	23.8	2850	5-30P	5-30R
	208	1	13.7	2850	6-20P	6-20R
	240	1	11.8	2850	6-20P	6-20R
	208	3	9.1	2850	15-20P	15-20R
	240	3	7.9	2850	15-20P	15-20R

* Outlet not supplied by Caddy Corporation.

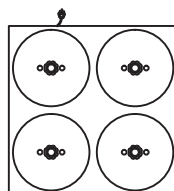


HCM-SQ-303-HH

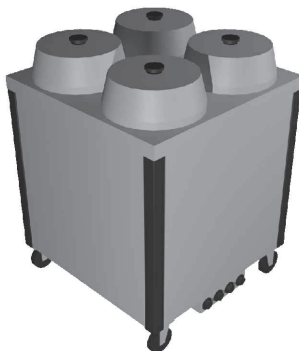


Model	Electrical Data				NEMA	
	Volts	Phase	Amps	Watts	Plug	Outlet *
CM-SQ-303-HH	120	1	23.8	2850	5-30P	5-30R
	208	1	13.7	2850	6-20P	6-20R
	240	1	11.8	2850	6-20P	6-20R
	208	3	9.1	2850	15-20P	15-20R
	240	3	7.9	2850	15-20P	15-20R

* Outlet not supplied by Caddy Corporation.



CM-S-304-HH



Model	Electrical Data				NEMA	
	Volts	Phase	Amps	Watts	Plug	Outlet *
CM-S-304-HH	208	1	17.3	3800	6-30P	6-30R

* Outlet not supplied by Caddy Corporation.



CADDY CORPORATION

509 Sharptown Road P.O. Box 345
Bridgeport, NJ 08014-0345
Tel: 856-467-4222 Fax: 856-467-5511
internet: www.caddycorp.com