

Champion®

The Dishwashing Machine Specialists

Project _____

Item No. _____

Quantity _____

STANDARD FEATURES

- **NEW** Factory authorized startup
- **ENERGY STAR®** Qualified (EUCC6 & EUCC8 only)
- **Exclusive Dual Rinse Technology**
- All-purpose 24"-wide peg belt
- Dish capacities up to 16,495 dishes per hour (NSF Listed)
- Automatic tank fill
- Chemical dispensing equipment connection provisions
- Choice of tank heat: electric, steam coils or direct steam injectors
- Stainless steel steam booster heater
- Common hot water connection
- Common drain connection
- Common electric connection (separate connection required for optional electric booster and blower-dryer)
- One piece stainless steel wash/rinse manifold system, easy to remove
- Door safety switch
- Electric eye energy sentinel (idle pump shut-off)
- Easy-to-reach top-mounted controls
- Heavy-gauge stainless construction
- Low-water tank heat protection
- Push-button start-stop station – load end
- Recirculating flushing nozzles – load end with prewash
- Rinse saver device
- Conveyor shut-off shelf – unload end
- Stainless steel enclosure panels – front & ends
- Vent fan control connection provided

OPTIONAL WORLD CLASS FEATURES

- **Heat Recovery** - redirects lost steam to heat using less energy

*The DualRinse feature offers the **Lowest Water/Utility/Chemical Consumption** as low as 48 GPH usage while circulating as much as **410+** gallons of water for **Consistently Good Results***



Photo is for general visual representation only. Please refer to specifications for the latest detailed product information.

EUCC SERIES

Upright 24" Conveyor
Dual Rinse Dishwashing Machine

SlimLine

A compact footprint that also reduces energy consumption by more than 58%

SPECIFIER STATEMENT

Specified unit will be Champion model EUCC4, EUCC6 or EUCC8 upright 24" conveyor water saver dishwashing machine.

Features automatic tank fill, chemical dispensing connection provisions, common water, drain and electrical connections, door safety switch, low water tank heat protection, rinse saver.

1 year parts and labor warranty.



Champion Industries, Inc.

3765 Champion Boulevard, Winston-Salem, NC 27105 Tel:

336/661-1556 Fax: 336/661-1979

www.championindustries.com

2674 N. Service Road,
Jordan Station, Ontario, Canada L0R 1S0
Tel: 905-562-4195 Fax: 905/562-4618



EUCC SERIES

Upright 24" Conveyor
Dual Rinse
Dishwashing Machine

SlimLine

Champion®

The Dishwashing Machine Specialists

MODULAR SECTIONS: Right to Left Operation

Dimensions shown in inches and [millimeters]

EUCC4

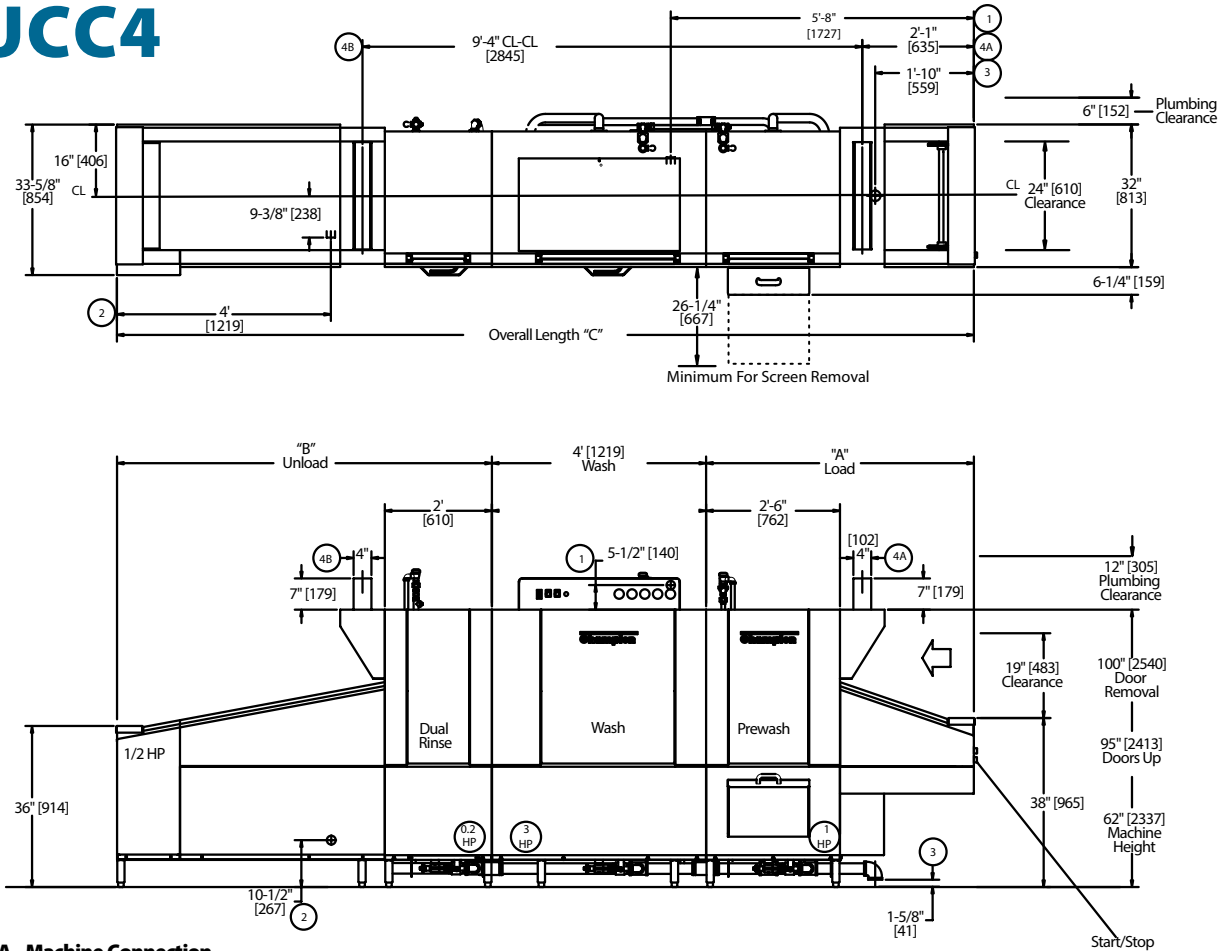


TABLE A - Machine Connection

Machine Only - Electric Heat			
Elec. Specs.	Rated Amps	Minimum Supply Ckt. Conductor Ampacity	Maximum Overcurrent Protective Device
208/60/3	171	225	225
240/60/3	149	175	175
480/60/3	74	90	90

Machine-steam			
Elec. Specs.	Rated Amps	Minimum Supply Ckt. Conductor Ampacity	Maximum Overcurrent Protective Device
208/60/3	21	25	25
240/60/3	18	25	25
480/60/3	10	15	15

Notes:

- Load Section (A) Standard 5', contains 30" Prewash
- Prewash also available in a 48" HD section
- Non-standard load section available in 12" increments
- Minimum load length 5' (includes 30" prewash)
- Unload Section (B) Standard 5 ft contains 24" Aux.
- Rinse available in 12" increments
- Built in electric booster requires a 5' minimum unload
- Built in steam booster requires a minimum 6' unload
- Blow dryer section adds 4' to overall length of machine

TABLE B - Booster Connection

40°F/22°C Rise – 15kW Electric Built-in Booster			
Elec. Specs.	Rated Amps	Minimum Supply Ckt. Conductor Ampacity	Maximum Overcurrent Protective Device
208/60/3	42	60	60
240/60/3	36	45	45
480/60/3	18	25	25

70°F/39°C Rise – 25kW Electric Built-in Booster			
Elec. Specs.	Rated Amps	Minimum Supply Ckt. Conductor Ampacity	Maximum Overcurrent Protective Device
208/60/3	70	90	90
240/60/3	60	80	80
480/60/3	30	40	40

Contact Factory for additional voltages.

Due to an ongoing value analysis program at Champion, specifications contained in this catalog are subject to change without notice.

Champion Industries, Inc., 3765 Champion Boulevard, Winston-Salem, NC 27105 • 336/661-1556 • Fax: 336/661-1979 • www.championindustries.com
2674 N. Service Road, Jordan Station, Ontario, Canada L0R 1S0 • 905/562-4195 • Fax: 905/562-4618

EUCC SERIES

Upright 24" Conveyor
Dual Rinse
Dishwashing Machine

SlimLine

Champion®

The Dishwashing Machine Specialists

MODULAR SECTIONS: Right to Left Operation

Dimensions shown in inches and [millimeters]

EUCC6

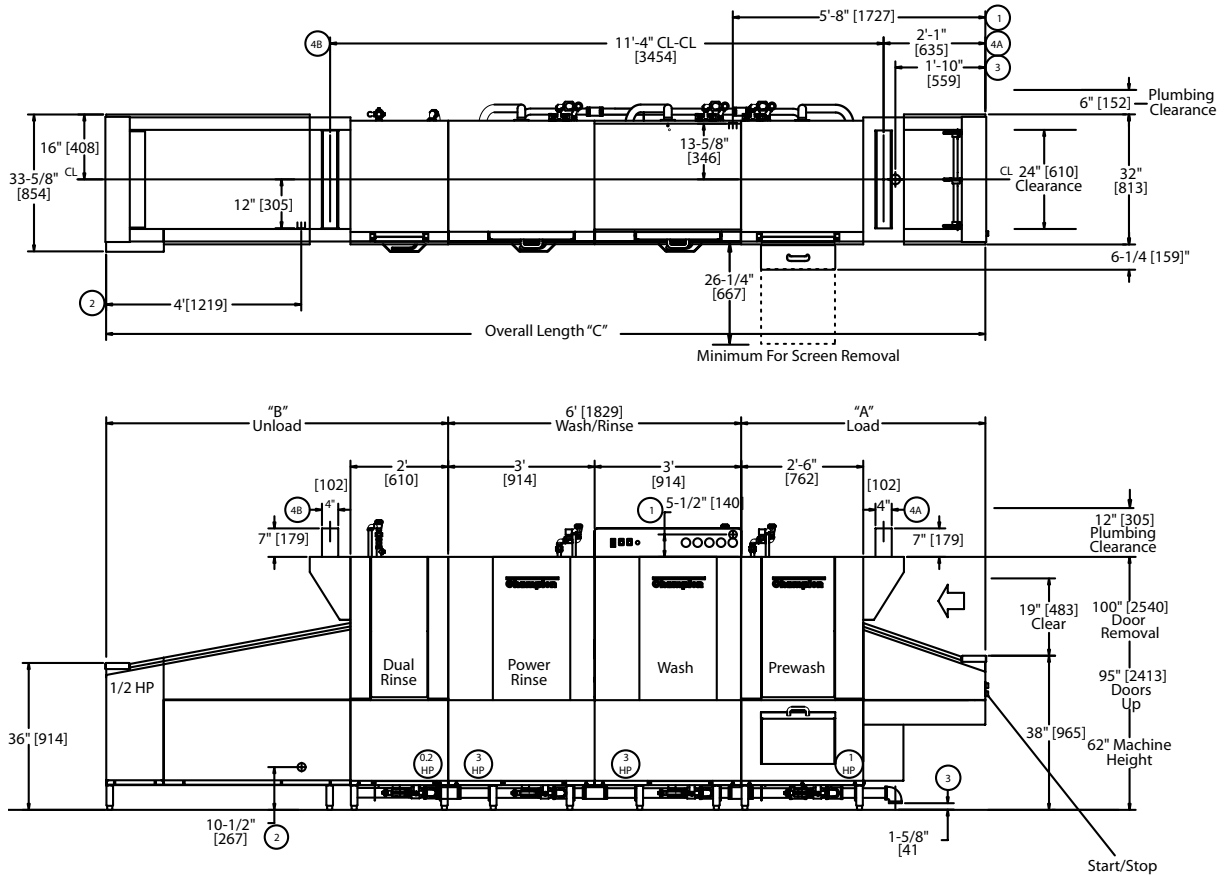


TABLE A - Machine Connection

Machine Only – Electric Heat			
Elec. Specs.	Rated Amps	Minimum Supply Ckt. Conductor Ampacity	Maximum Overcurrent Protective Device
208/60/3	183	250	250
240/60/3	158	200	200
480/60/3	80	100	100

Machine-steam			
Elec. Specs.	Rated Amps	Minimum Supply Ckt. Conductor Ampacity	Maximum Overcurrent Protective Device
208/60/3	29	40	40
240/60/3	26	35	35
480/60/3	14	20	20

Notes:

- Load Section (A) Standard 5', contains 30" Prewash
- Prewash also available in a 48" HD section
- Non-standard load section available in 12" increments
- Minimum load length 5' (includes 30" prewash)
- Unload Section (B) Standard 5 ft contains 24" Aux.
- Rinse available in 12" increments
- Built in electric booster requires a 5' minimum unload
- Built in steam booster requires a minimum 6' unload
- Blow dryer section adds 4' to overall length of machine

TABLE B - Booster Connection

40°F/22°C Rise – 10kW Electric Built-in Booster			
Elec. Specs.	Rated Amps	Minimum Supply Ckt. Conductor Ampacity	Maximum Overcurrent Protective Device
208/60/3	28	35	35
240/60/3	24	30	30
480/60/3	12	15	15

70°F/39°C Rise – 18kW Electric Built-in Booster			
Elec. Specs.	Rated Amps	Minimum Supply Ckt. Conductor Ampacity	Maximum Overcurrent Protective Device
208/60/3	50	70	70
240/60/3	44	60	60
480/60/3	22	30	30

Contact Factory for additional voltages.

Due to an ongoing value analysis program at Champion, specifications contained in this catalog are subject to change without notice.

Champion Industries, Inc., 3765 Champion Boulevard, Winston-Salem, NC 27105 • 336/661-1556 • Fax: 336/661-1979 • www.championindustries.com
2674 N. Service Road, Jordan Station, Ontario, Canada L0R 1S0 • 905/562-4195 • Fax: 905/562-4618

EUCC SERIES

Upright 24" Conveyor
Dual Rinse
Dishwashing Machine

SlimLine

Champion®

The Dishwashing Machine Specialists

MODULAR SECTIONS: Right to Left Operation

Dimensions shown in inches and [millimeters]

EUCC8

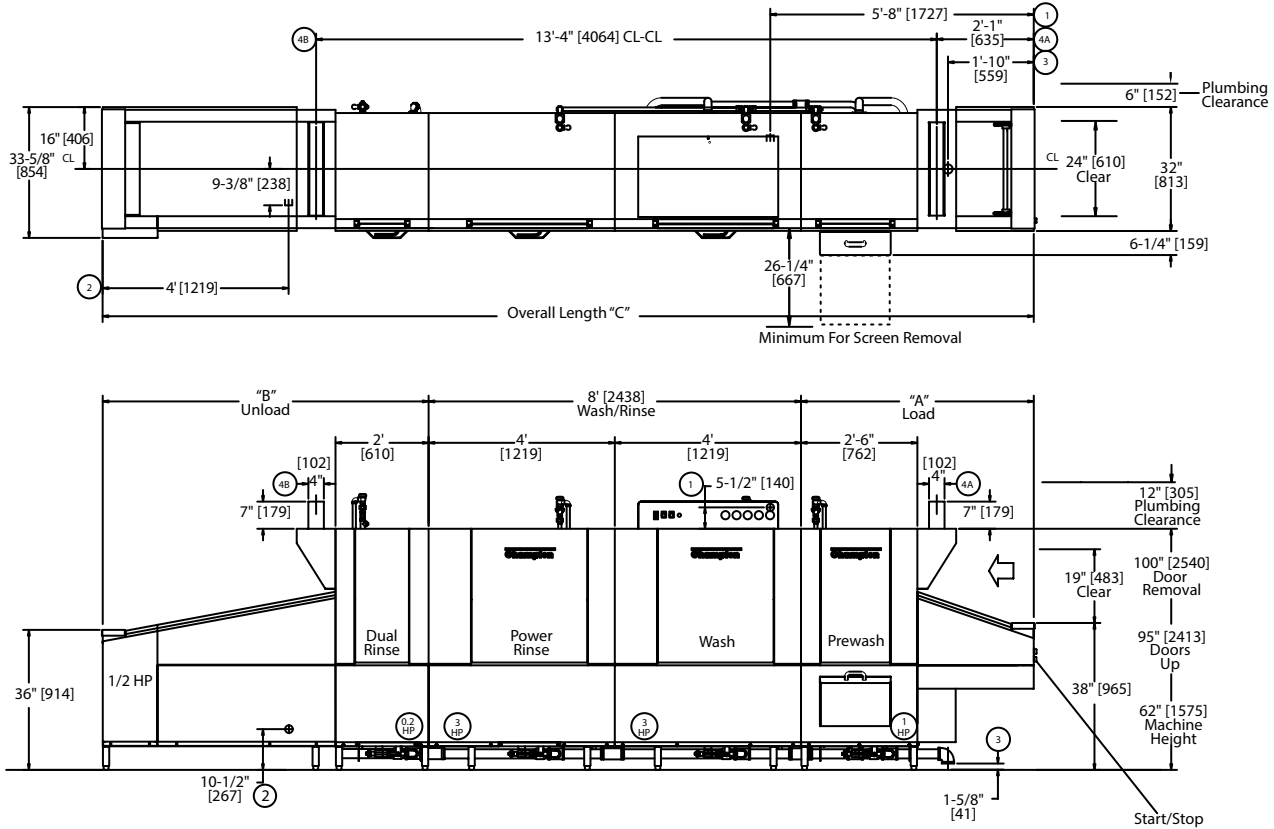


TABLE A - Machine Connection

Machine Only - Electric Heat			
Elec. Specs.	Rated Amps	Minimum Supply Ckt. Conductor Ampacity	Maximum Overcurrent Protective Device
208/60/3	183	250	250
240/60/3	158	200	200
480/60/3	80	100	100

Machine-steam			
Elec. Specs.	Rated Amps	Minimum Supply Ckt. Conductor Ampacity	Maximum Overcurrent Protective Device
208/60/3	21	25	25
240/60/3	18	25	25
480/60/3	10	15	15

Notes:

- Load Section (A) Standard 5', contains 30" Prewash
- Prewash also available in a 48" HD section
- Non-standard load section available in 12" increments
- Minimum load length 5' (includes 30" prewash)
- Unload Section (B) Standard 5 ft contains 24" Aux.
- Rinse available in 12" increments
- Built in electric booster requires a 5' minimum unload
- Built in steam booster requires a minimum 6' unload
- Blow dryer section adds 4' to overall length of machine

TABLE B - Booster Connection

40°F/22°C Rise - 16kW Electric Built-in Booster			
Elec. Specs.	Rated Amps	Minimum Supply Ckt. Conductor Ampacity	Maximum Overcurrent Protective Device
208/60/3	44	60	60
240/60/3	39	50	50
480/60/3	19	25	25

70°F/39°C Rise - 28kW Electric Built-in Booster			
Elec. Specs.	Rated Amps	Minimum Supply Ckt. Conductor Ampacity	Maximum Overcurrent Protective Device
208/60/3	77	100	100
240/60/3	67	90	90
480/60/3	34	45	45

Due to an ongoing value analysis program at Champion, specifications contained in this catalog are subject to change without notice.

Champion Industries, Inc., 3765 Champion Boulevard, Winston-Salem, NC 27105 • 336/661-1556 • Fax: 336/661-1979 • www.championindustries.com
2674 N. Service Road, Jordan Station, Ontario, Canada L0R 1S0 • 905/562-4195 • Fax: 905/562-4618

EUCC SERIES

Upright 24" Conveyor
Dual Rinse
Dishwashing Machine

SlimLine

Champion®

The Dishwashing Machine Specialists

Control Panel



Digital Gauges



Durable Stainless Steel Start/Stop Switch

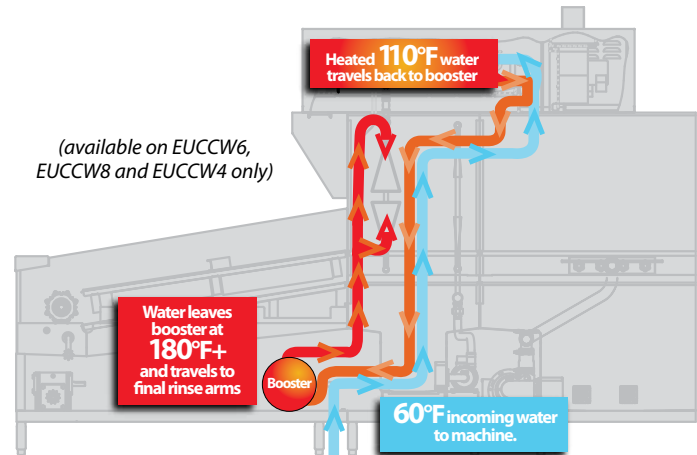


OPTIONS & ACCESSORIES

- Tank heat; choices of electric, steam coil or steam injectors
- Stainless Steel Steam Booster Heaters – (completely inter-plumbed, controls are inter-wired) (40°F or 70°F rise)
- 48" Blower Dryer, electric or steam (add 4' to overall length)
- Belts: standard peg belt, flat belt, thermal tray belt, silverware belt, belts with upper cross rods, and other select combination belts
- Start/Stop station, unload end
- Back panels, stainless steel
- Cold water thermostat (for pre-wash)
- External scrap bucket on 48" pre-wash (standard on 30" pre-wash)
- External scrap bucket on wash tank
- Insulated hoods, lower panels
- Motor pumps, 2 or 3 Hp optional in lieu of 1 Hp on pre-wash
- Bumper rail, machine mounted
- Steam pressure regulating valve (unmounted)

Heat Recovery –

Redirects lost steam to heat using less energy.



- Drain water tempering kit (mounted)
- Insulated hinged door
- Shock arrestor (water)
- Drain interlocks
- Heat Recovery Unit redirects lost steam to heat using less energy
- NEW** Champion ION scale prevention system

Champion®

The Dishwashing Machine Specialists

EUCC SERIES

SlimLine

Upright 24" Conveyor
Dual Rinse
Dishwashing Machine

Shipping weight crated: **150 lbs./ft.[68kg./m.]**
Height with doors up: **95"**
Height to remove doors: **100"**

SPECIFICATIONS

Capacities	EUCC4	EUCC6	EUCC8
Dishes per hr. (NSF rated)	10,472	11,127	16,495
Conveyor speed (ft./min.)	8.0	8.5	12.6

Motor horsepower	EUCC4	EUCC6	EUCC8
Drive	1/2 Hp	1/2 Hp	1/2 Hp
Prewash 30" [762]	1 Hp	1 Hp	1 Hp
Prewash 48" [1219]	3 Hp	3 Hp	3 Hp
Wash	3 Hp	3 Hp	3 Hp
Power Rinse*	N/A	3 Hp	3 Hp
Auxiliary Rinse	1/5 Hp	1/5 Hp	1/5 Hp

Water consumption	EUCC4	EUCC6	EUCC8
Gal. per hr. (max. use)	115	48	141

Temperatures °F	EUCC4	EUCC6	EUCC8
Wash (min.)	160	150	150
Power Rinse (min.)*	N/A	160	160
Auxiliary Rinse (min.)	165	165	165
Final rinse (min.)	180	180	180

Heating

	EUCC4	EUCC6	EUCC8
Tank heat	Steam	Electric	
Wash tank	125 lbs./hr.	25 kW	
Wash tank (EUCC4)	225 lbs./hr.	45 kW	
Rinse tank *	100 lbs./hr.	20 kW	
Auxiliary rinse	50 lbs./hr.	10 kW	
Steam booster	75	50	80
(lbs./hr. required for 40°F rise)			
Steam booster	125	90	135
(lbs./hr. required for 70°F rise)			
Electric booster	15	10	16
(kW required for 40°F rise)			
Electric booster	25	18	28
(kW required for 70°F rise)			

Venting

Minimum CFM, load end	300
Minimum CFM, unload end	800

*EUCC4 has no power rinse tank

Booster connections may vary. Contact the Factory.

Standard Voltages (Specify choice): 208/60/3, 240/60/3, and 480/60/3. Available in 3-phase only. For non-standard 3-phase voltages, contact the Factory.

Plumbing Notes Because of the variation in house-supplied water pressure, a water pressure regulating valve (PRV) is needed (water PRV is standard). Steam PRV's may be required for pressure higher than 30 psi. The PRV's can either be purchased from Champion or obtained locally.

Utilities EUCC4

1 Electrical	Contact factory for specific machine electrical requirements
2 Hot Water	3/4" NPT 180°F hot water connection. (For machine without built-in booster)
3 Drain	2" NPT connection, 62 gpm max flow rate
4 Vents	A Load end: 300 CFM 1/4" S.P. B Unload end: 800 CFM 1/4" S.P. With blower-dryer, increase room ventilation by 600 CFM.

Utilities EUCC6

1 Electrical	Contact factory for specific machine electrical requirements
2 Hot Water	3/4" NPT 180°F hot water connection. (For machine without built-in booster)
3 Drain	2" NPT connection, 62 gpm max flow rate
4 Vents	A Load end: 300 CFM 1/4" S.P. B Unload end: 800 CFM 1/4" S.P. With blower-dryer, increase room ventilation by 600 CFM.

Utilities EUCC8

1 Electrical	Contact factory for specific machine electrical requirements
2 Hot Water	3/4" NPT 180°F hot water connection. (For machine without built-in booster)
3 Drain	2" NPT connection, 62 gpm max flow rate
4 Vents	A Load end: 300 CFM 1/4" S.P. B Unload end: 800 CFM 1/4" S.P. With blower-dryer, increase room ventilation by 600 CFM.

Warning Plumbing and electrical connections should be made by qualified personnel who will observe all the applicable plumbing, sanitary, safety codes and the National Electrical Code.

Note Water Hammer Arrestor (meeting ASSE-1010 standard or equivalent) to be supplied (by others) in common water supply line at service connection.

Venting Notes

Fabricated duct size: 3-7/8" x 23-7/8" (outside dimensions)

Due to an ongoing value analysis program at Champion, specifications contained in this catalog are subject to change without notice.

Champion Industries, Inc., 3765 Champion Boulevard, Winston-Salem, NC 27105 • 336/661-1556 • Fax: 336/661-1979 • www.championindustries.com
2674 N. Service Road, Jordan Station, Ontario, Canada L0R 1S0 • 905/562-4195 • Fax: 905/562-4618