

Empura[®] REFRIGERATION

OPEN THE PACKING OF BEER TOWER

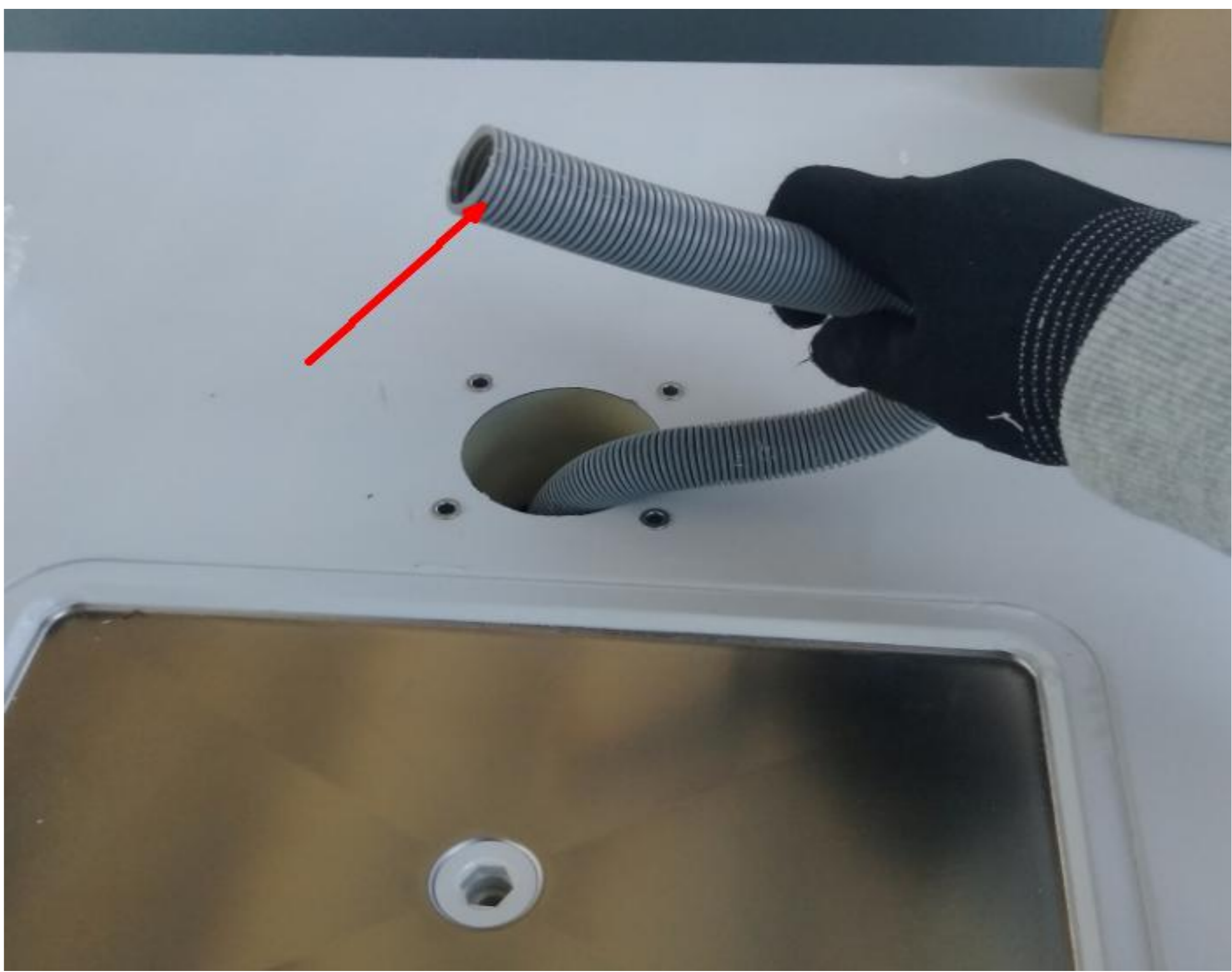
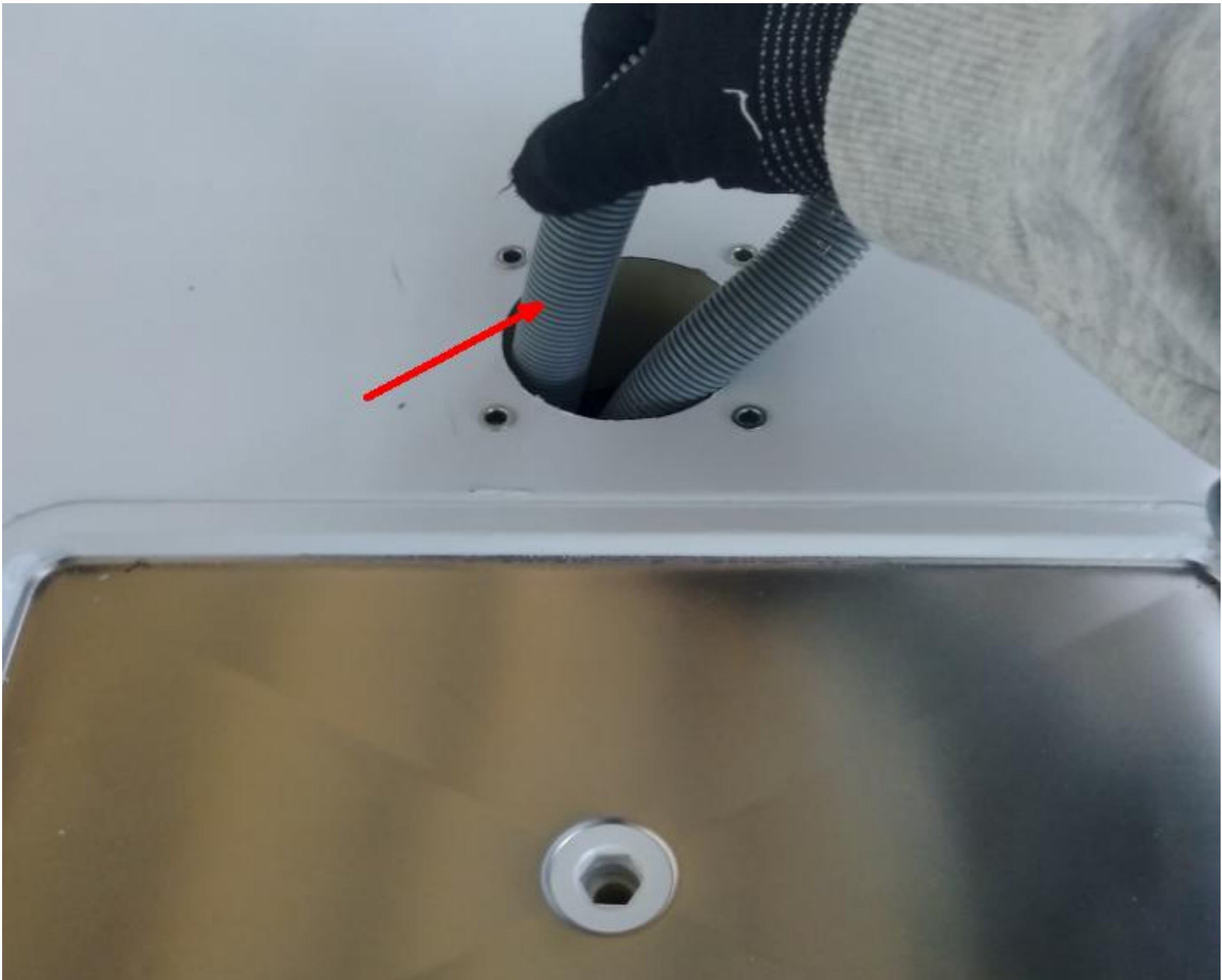


YOU WILL FIND THE MAIN PARTS AND WASHERS AND BACKUP WASHERS

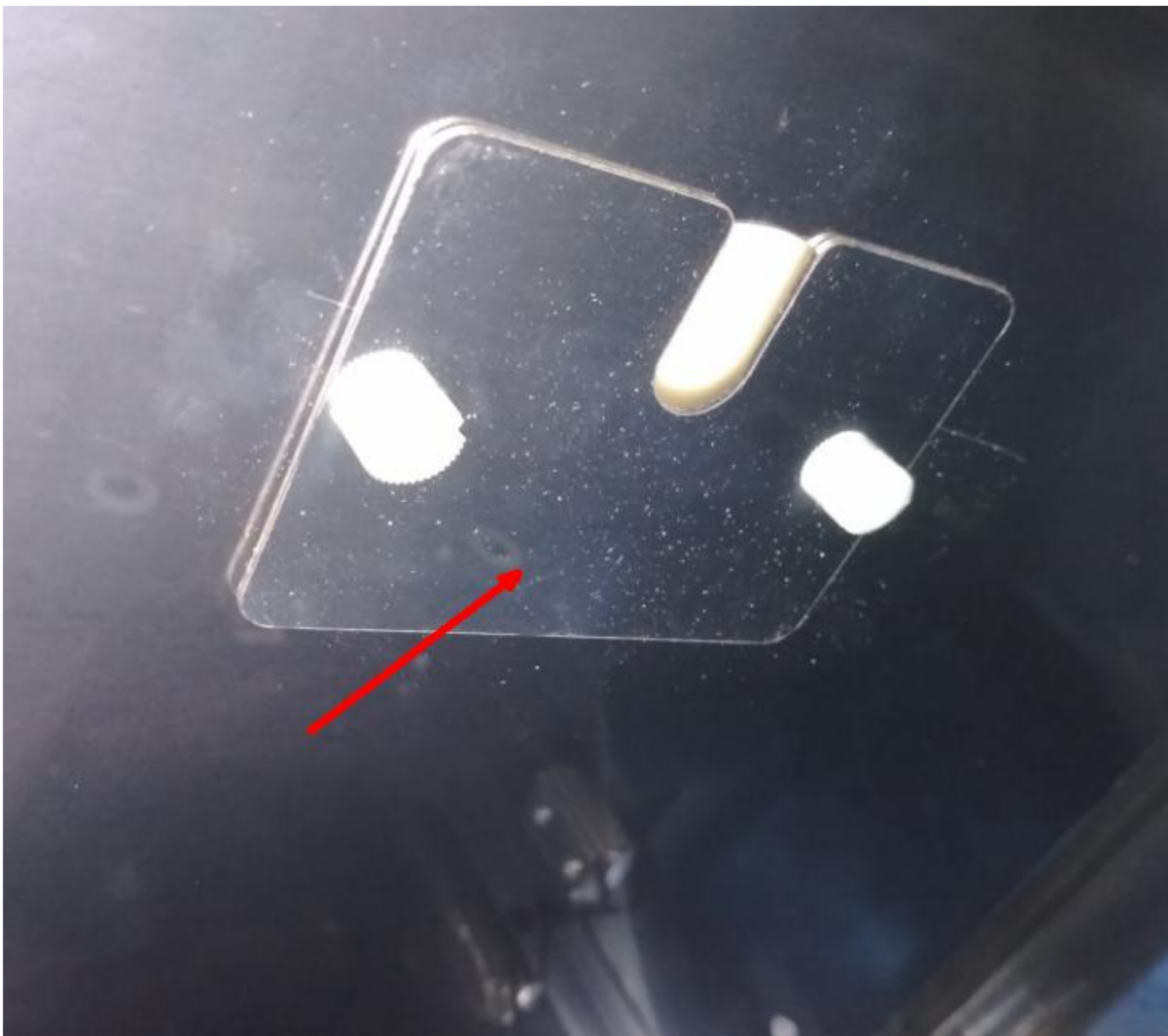


EMPURA REFRIGERATION BEER TOWER INSTALL GUIDE

PULL OUT THE COOLING AIR CONDUCT TUBE FROM THE HOLE IN WORK TOP



SCREW OFF THE COVER FROM THE INNER TOP



FIND THE BEER TUBE FROM BEER TOWER



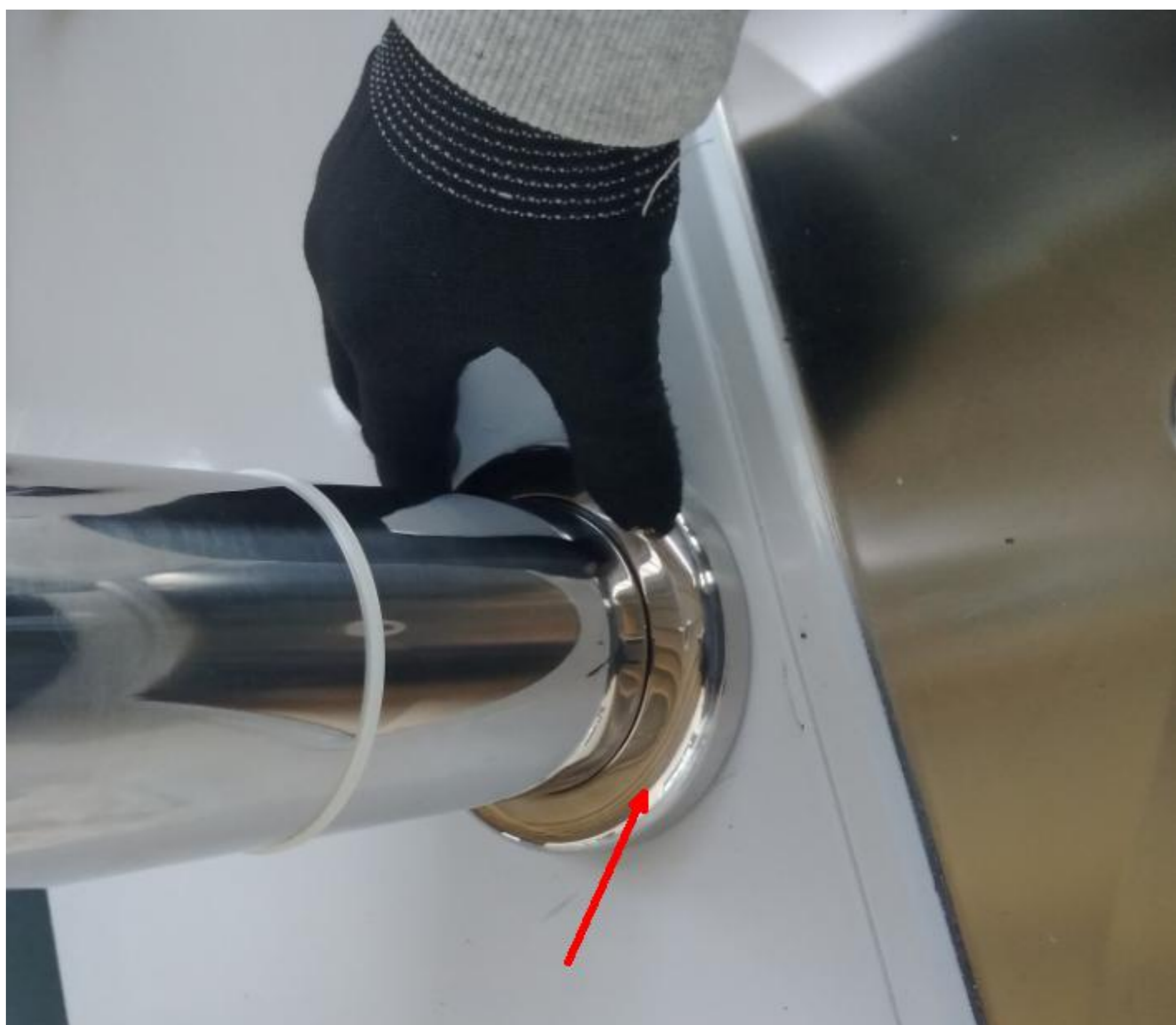
MAKE THE BEER TUBE THROUGH THE HOLE AND GO INTO INNER CHEST OF THE UNIT, PUT COOLING AIR CONDUCT TUBE INTO TOWER CHEST.



ALIGN ALL THE OPENS ON BEER TOWER AND BIG BLACK WASHER



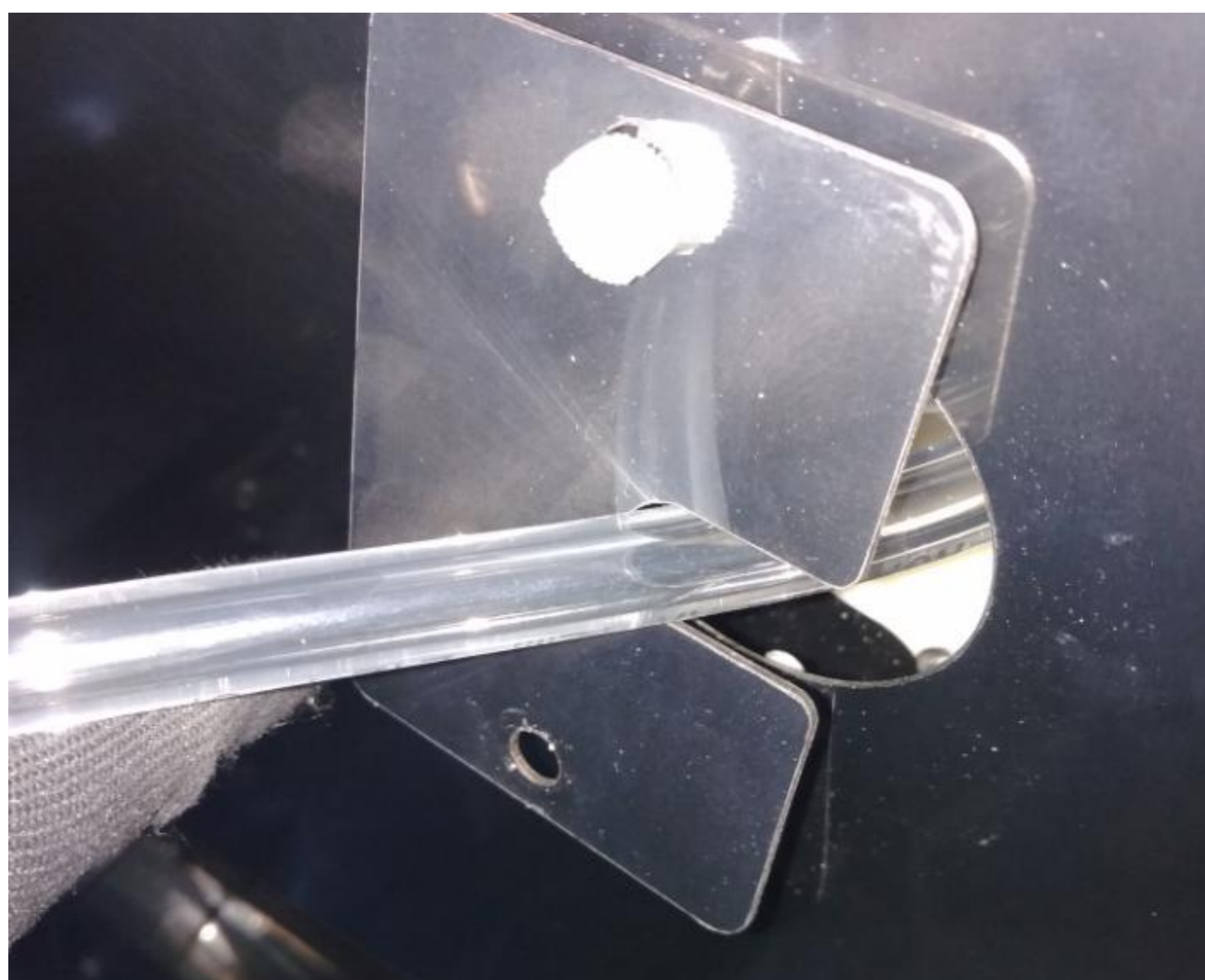
THEN COVER THE OVERLAY



THEN SCREW THE HANDLE ON FAUCET



FIX THE COVER LIKE BELOW



WHEN BEER TOWER IS NOT STEADY, YOU MAY USE BELOW MULTI-FUNCTION SPANNER



OPEN TOP CAP OF THE BEER TOWER TO ADJUSTING THE FAUCET



BELOW IS KEG TAP HAS THREE INTERFACES, BOTTOM INTERFACE IS TO CONNET TO BARREL.



EMPURA REFRIGERATION BEER TOWER INSTALL GUIDE

REMOVE BLACK COVER, WHEN CONNECTING, WHITE WASHER SHOULD BE INVOLVED.



CONNECT CO₂ TUBE TO THE SIDE INTERFACE. WHITE WASHER MUST BE INVOLVED.



THEN WE COMPLETE THE CONNECTION



SINGLE FAUCET CONNECTION LIKE BELOW



DOUBLE FAUCETS CONNECTION LIKE BELOW.



TEE JOINT IS USED TO CONNECT THREE CO₂ TUBE LIKE BELOW:

