



Stainless Product Lines

- Economy Work Tables
- Standard Duty Work Tables
- Super Duty Work Tables
- Equipment Stands
- Clean Dish Tables
- Soiled Dish Tables
- Undercounter Dish Tables
- Single Overshelves
- Double Overshelves
- Hand Sinks
- Standard Duty
Compartment Sinks
- Super Duty
Compartment Sinks
- Microwave Shelves
- Wall Mounted Shelves

Welcome to the essential guide for maintaining the pristine condition and longevity of your Empura Stainless steel equipment. Understanding the proper care techniques ensures your equipment remains functional and visually appealing.

Understanding Your Empura Stainless Steel Equipment

Empura Stainless steel is renowned for its durability and resistance to corrosion and tarnishing. Knowing the type of stainless steel and its specific care requirements is crucial for effective maintenance.

ES3G3048



Daily Cleaning Routine

For daily maintenance, use a soft cloth and mild detergent diluted in water.

- 1) Gently wipe the surface in the direction of the steel grain
- 2) Rinse with clean water
- 3) Dry with a soft towel to prevent water spots.

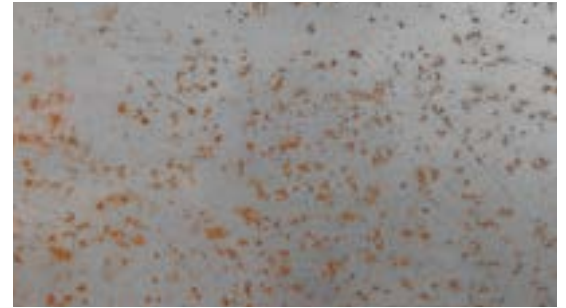
Dealing with Tough Stains & Fingerprints

For stubborn stains, a mixture of baking soda and water can be applied with a soft brush, again working in the direction of the grain. Fingerprints and smears can be removed with a glass cleaner or a solution of vinegar and water, ensuring a streak-free finish.



Preventing Rust & Corrosion

Prevent rust by keeping the steel dry and using a stainless steel cleaner that contains inhibitors to protect against oxidation. Regularly inspect for signs of wear and treat promptly to prevent further damage.



Repairing Scratches & Dents

Minor scratches can be blended using a non-abrasive pad, moving in the direction of the grain. For deeper scratches or dents, professional repair might be necessary to restore the surface.

Choosing the Right Cleaning Products

Avoid using abrasive cleaners or pads that can scratch the surface. Chlorine-based cleaners and those containing chlorides should also be avoided as they can corrode stainless steel over time.



Takeaways

With consistent care and proper cleaning techniques, your Empura Stainless equipment will maintain its aesthetic and functional integrity for years to come. Remember, the key to preserving stainless steel is in the regular, gentle maintenance and prompt attention to any spills, stains, or damage.